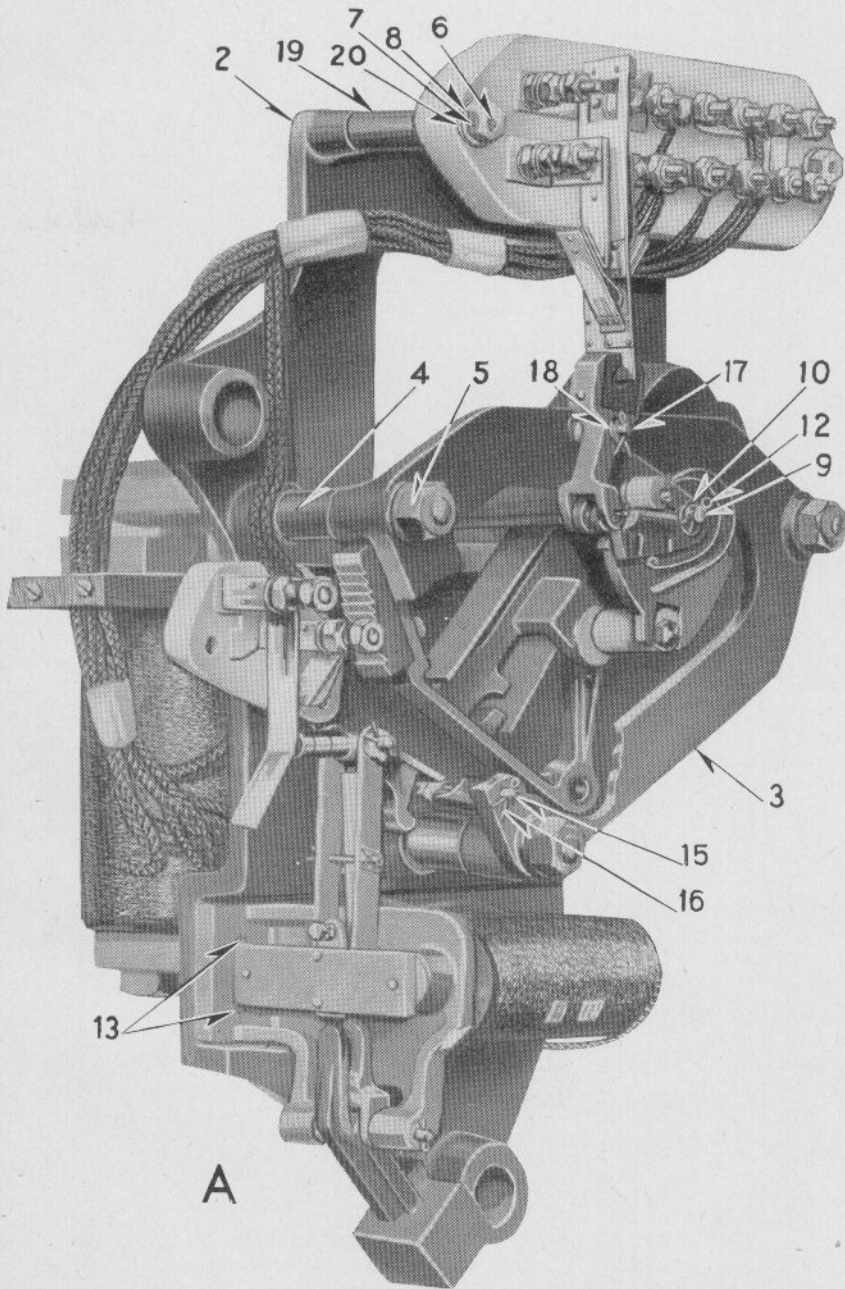


UNION SWITCH & SIGNAL CO.



MECHANISM FRAME DETAILS, STYLE "DW" AUTOMATIC
FLAGMAN (D-C.)

UNION SWITCH & SIGNAL CO.

MECHANISM AND FRAME DETAILS, STYLE "DW" AUTOMATIC
FLAGMAN (D-C.)

Order by Plate, Piece, Reference and Abbreviated Description Given in
Heavy Face Type Only.

Piece	Ref.	Description	Drawing Reference
74000	A	Mechanism, having 1000-Ohm Slot and 5-Ohm operating magnets for 10-Volt operation (includes details shown on Plates K-9, K-11, K-13 and K-15)	D-1971-2
99654	Aa	Mechanism, having 1000-Ohm Slot and 5-Ohm operating Magnets with Flasher Circuit Controller Ref. A, Plate K-51, wired for operating a series of Lights for 10-Volt operation (includes details shown on Plates K-9, K-11, K-13, K-15 and K-51)	D-1971-2
129605	Ab	Mechanism, having 1000-Ohm Slot and 5-Ohm operating Magnets, equipped with Flasher Circuit Controller, Ref. A, Plate K-51 wired for operating a single Light for 10-Volt operation (includes details shown on Plates K-9, K-11, K-13, K-15 and K-51)	D-1971-2
113620	Ac	Mechanism, having 670-Ohm Slot and 5-Ohm operating Magnets, for 8-Volt operation (includes details shown on Plates K-9, K-11, K-13 and K-15)	D-1971-2
127809	Ad	Mechanism, having 1000-Ohm Slot and 5-Ohm operating Magnets and Latch Circuit Controller to Light one Lamp for clear Indication and one Lamp for Danger Indication for 10-Volt operation (includes details shown on Plates K-9, K-11, K-13 and K-15)	D-1971-2
77668	2	Frame	C-8885-6
77670	3	Front Bearing Plate	C-8885-6
79001	4	Stud, 3/4"x4 5/8" for fastening Ref. 3 to Ref. 2	8261-122
	5	Nut, 1/2" Hex. (Cad. Pl.)	
75215	6	Stud, 7/16"x4 1/8" for fastening terminal board to Ref. 2	8114-525

UNION SWITCH & SIGNAL CO.

MECHANISM AND FRAME DETAILS, STYLE "DW" AUTOMATIC
 FLAGMAN (D-C.)
 (Continued)

Order by Plate, Piece, Reference and Abbreviated Description Given in
 Heavy Face Type Only.

Piece	Ref.	Description	Drawing Reference
	7	Nut, $\frac{5}{16}$ " Hex. (Cad. Pl.) for Ref. 6.	
74918	8	Washer for Ref. 6.....	7826-83
74052	9	Main Shaft.....	C-8885-4
85547	10	Washer for both ends of Shaft Ref. 9.....	7828-287
73257	11	Journal (not shown) on shaft Ref. 9 for operating arm, Ref. 15, Plate K-15.....	8093-93
	12	Cotter, $\frac{1}{8}$ "x $\frac{3}{4}$ " (Cad. Pl.) in end of shaft Ref. 9, also for holding Ref. 11 in place.	
	13	Cap Screw, $\frac{5}{16}$ "x $\frac{7}{8}$ " Hex. Hd. for attaching slot magnet bracket to Ref. 2.	
34626	14	Lock Washer (not shown) for Ref. 13.....	8486-140
74927	15	Pin, $\frac{1}{4}$ "x $\frac{1}{8}$ " for attaching link Ref. 16 Plate K-11 to Ref. 3.....	B-10203-1
	16	Cotter, $\frac{1}{16}$ "x $\frac{5}{8}$ " S. (Cad. Pl.) for Ref. 15, also Ref. 17.	
74098	17	Stud, $\frac{1}{4}$ "x $\frac{15}{8}$ " for attaching spring shifting arm Ref. 35, Plate K-15 to Ref. 3.....	8114-330
37764	18	Washer for Ref. 17.....	7828-166
136194	19	Bushing for Ref. 6.....	8072-650
136191	20	Lead Washer for Ref. 6.....	8274-99