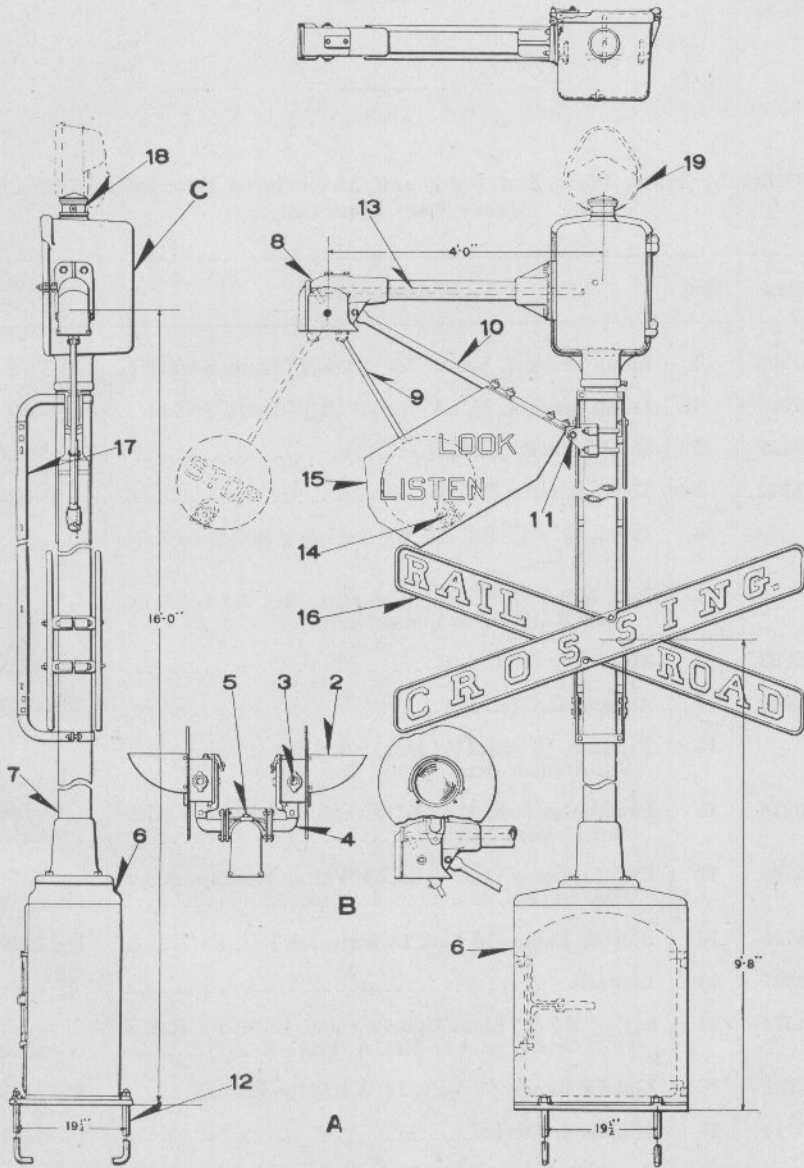


UNION SWITCH & SIGNAL CO.



STYLE "DW" AUTOMATIC FLAGMAN WITH INSTRUMENT CASE AND CROSSING SIGN

UNION SWITCH & SIGNAL CO.

STYLE "DW" AUTOMATIC FLAGMAN (D. C.) COMPLETE WITH CROSSING SIGN AND INSTRUMENT CASE

Order by Plate, Piece, Reference and Abbreviated Description Given in Heavy Face Type Only.

Piece	Ref.	Description	Drawing Reference
	A	Style "DW" Automatic Flagman with 5" Pipe Post, Ladder, Instrument Case and Crossing Sign (for D.C. 10-Volt operation) (without Crossing Bell and Style "HC-2" Electric Light Units) 16' 0" from Bottom of Instrument Case to Center of Banner Arm.....	E-2999-4
128973	Aa	Style "DW" Automatic Flagman with 5" Pipe Post, Ladder, Instrument Case and Two "HC-2" Electric Lamp Units (Ref. B) for D.C. 10-Volt Operation (without Crossing Sign and Crossing Bell) 16' 0" from Bottom of Instrument case to Center of Banner Arm.....	E-2999-4
	B	Two Style "HC-2" Electric Light Units with Adapter and necessary fittings for mounting on Banner Arm of Style "DW" Automatic Flagman for Ref. Aa	E-2999-4
73881	C	Mechanism Case with D.C. Mechanism having 1000 Ohm Slot and 5 Ohm Operating Magnets Ref. A, Plate K-9 and Pinnacle Ref. 18 for 10 Volt operation.....	C-8284-1
128974	Ca	Mechanism Case with D.C. Mechanism having 1000 Ohm Slot and 5 Ohm operating Magnets Ref. Ab, Plate K-9, Flasher Circuit Controller Ref. A, Plate K-51 and Pinnacle Ref. 18 for 10-Volt operation...	C-8284-1
124372	2	Style "HC-2" Light Unit (without Bulb) for Ref. B (For details refer to Ref. A, Plate K-107).....	C-8965-18
126729	3	Electric Lamp (10 Volt, 18 Watt) for Ref. 2.....	B-12409-16
129116	4	Adapter for Ref. B.....	C-8884-27
	5	Tap Bolt, 1/2"-13x1 1/4" Hex. Hd. for Attaching Ref. 4 to Banner Arm.	

UNION SWITCH & SIGNAL CO.

STYLE "DW" AUTOMATIC FLAGMAN (D. C.) COMPLETE WITH CROSSING SIGN AND INSTRUMENT CASE

(Continued)

Order by Plate, Piece, Reference and Abbreviated Description Given in Heavy Face Type Only.

Piece	Ref.	Description	Drawing Reference
68687	6	Instrument Case (for details see Ref. A, Plate L-1135).....	C-7589-6
116172	7	5" Pipe Post, 11' 9 1/2" long with Socket for Refs. A and Aa.....	B-9893-99
75599	8	Banner Arm.....	C-8884-4
123199	9	Banner (Lettered Stop) as shown.....	C-8884-21
75603	10	Shield Brace.....	C-8884-3
	11	Bolt, 5/8" x 1 3/4" Hex. Hd. with Hex. Nut and Plain Lock Washer (7/32" x 1/8") for attaching Ref. 10 to Pole.	
10276	12	Foundation Bolt, 1" x 3' 0" with 1" Hex. Nut and 1" Std. Plate Washer.....	7913-54
75883	13	Operating Rod.....	C-8884-9
120802	14	Electric Lamp (12 Volts .25 Ampere) for Banner...	B-12409-12
80856	15	Banner Mask (Lettered Look-Listen) as shown....	C-8884-10
	16	Crossing Sign with Clamps, Bolts and Nuts for fastening to 5" Pipe Post (for details see Plate K-97).....	C-5844-4
97094	17	Ladder 7' 9" long with Stays for Refs. A and Aa....	B-10313-183
70957	18	Pinnacle.....	B-8121-14
	19	Crossing Bell (See Plates K-80 D.C. and K-91 A.C.)	