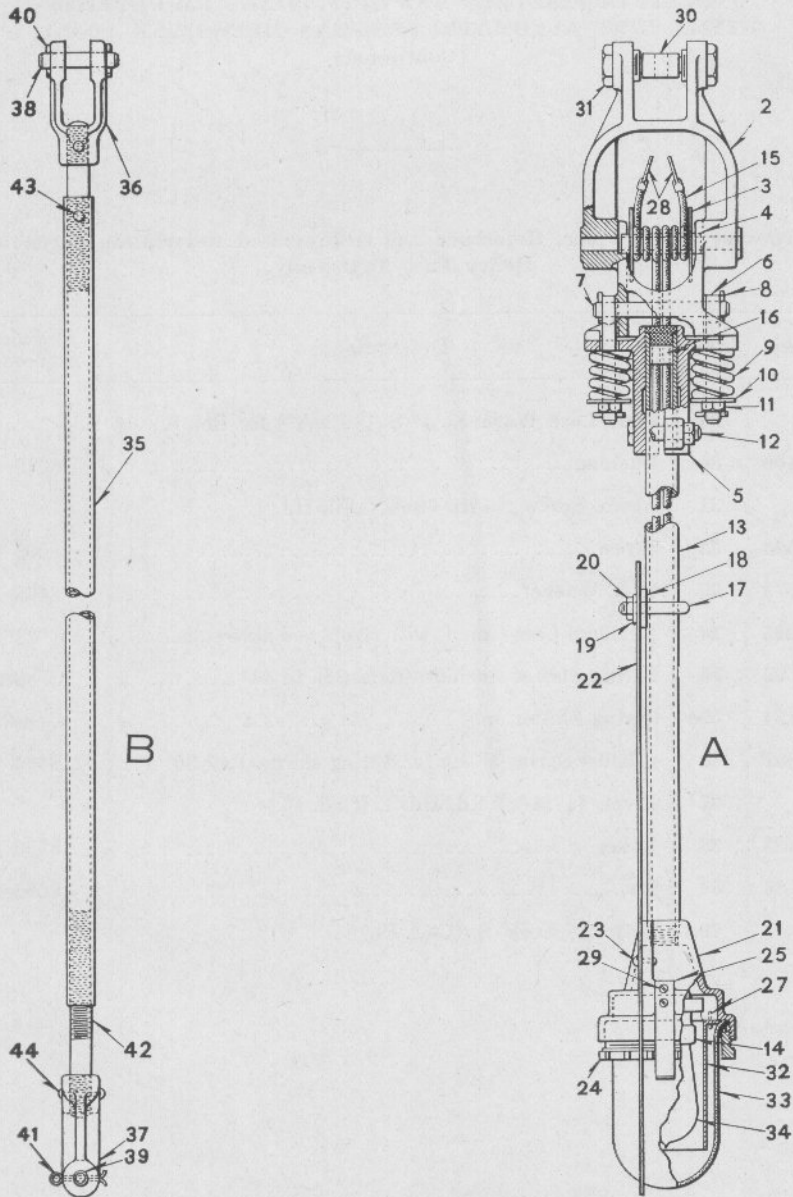


UNION SWITCH & SIGNAL CO.



26 AND 45 NOT SHOWN

BANNER ARM AND OPERATING ROD DETAILS  
STYLE "DW" AUTOMATIC FLAGMAN (D-C.)

UNION SWITCH & SIGNAL CO.

BANNER ARM AND OPERATING ROD DETAILS  
 STYLE "DW" AUTOMATIC FLAGMAN (D-C.)

See Plate K-18 For Latest Design of Banner

Order by Plate, Piece, Reference and Abbreviated Description Given in Heavy Face Type Only.

Piece	Ref.	Description	Drawing Deference
75600	A	Banner (includes Refs. 2 to 31, Refs. 32 to 34 to be ordered separately.) (See Plate K-18 for latest design) .....	C-8884-4
75883	B	Operating Rod (includes Refs. 35 to 44) .....	C-8884-9
75773	2	Bearing .....	C-8884-3
67714	3	Ins. Washer .....	8078-1092
78292	4	Ins. Tubing .....	B-10275-1
75760	5	Clamp .....	C-8884-3
75761	6	Eye Bolt, $\frac{3}{8}$ " x $3\frac{3}{8}$ " .....	8034-145
34770	7	Pin, $\frac{3}{8}$ " x $3\frac{1}{16}$ " .....	B-10209-1
	8	Cotter, $\frac{1}{8}$ " x $\frac{3}{4}$ " (Cad. Pl.) for Pin Ref. 7.	
75762	9	Coil Spring .....	7770-288
	10	Std. Plate Washer, $\frac{3}{8}$ ".	
	11	Nut, $\frac{3}{8}$ " Hex. (Cad. Pl.) for Refs. 6 and 12.	
	12	Bolt, $\frac{3}{8}$ " x $1\frac{3}{4}$ " Hex. Hd. (Cad. Pl.)	
75763	13	Pipe, $\frac{1}{2}$ " x 2' 11 $\frac{5}{16}$ " .....	B-10925-1
86101	14	Lamp Receptacle .....	B-9954-7
75765	15	Lead .....	B-9998-9
75766	16	Plug .....	C-7330-5
75767	17	"U" Bolt, $\frac{1}{4}$ " .....	8782-136
75768	18	Washer .....	7826-203

UNION SWITCH & SIGNAL CO.

BANNER ARM AND OPERATING ROD DETAILS  
 STYLE "DW" AUTOMATIC FLAGMAN (D-C.)

(Continued)

See Plate K-18 For Latest Design of Banner

Order by Plate, Piece, Reference and Abbreviated Description Given in  
 Heavy Face Type Only.

Piece	Ref.	Description	Drawing Reference
38149	19	Washer .....	7826-104
	20	Nut Std., 1/4" Hex.	
75769	21	Lamp Support .....	C-8884-3
75770	22	Disc .....	10933-24
	23	Rivet, 1/4"x1/2" Rd. Hd. I.	
75771	24	Nut .....	8082-160
75772	25	Spring .....	8735-530
	26	Machine Screw No. 6-40x5/8" Fil. Hd. Br. (not shown).	
47674	27	Pin .....	8097-350
68929	28	Terminal for Lead Ref. 15 .....	8064-471
73615	29	Machine Screw No. 6-40x3/8" Fil. Hd. Br.	
78392	30	Trunnion for operating Rod connector .....	8076-77
77791	31	Trunnion .....	8378-338
75812	32	Sleeve .....	8350-604
117796	33	Ruby Globe .....	8468-32
75813	34	Electric Lamp (13 Volts, 5 Watts) (Medium Screw Base) for 10-Volt operation .....	B-12409-3
114325	34a	Electric Lamp (13 Volts, 5 Watts) for 8-Volt operation .....	B-12409-3

## UNION SWITCH &amp; SIGNAL CO.

**BANNER ARM AND OPERATING ROD DETAILS  
STYLE "DW" AUTOMATIC FLAGMAN (D-C.)  
(Continued)**

See Plate K-18 For Latest Design of Banner

Order by Plate, Piece, Reference and Abbreviated Description Given in  
Heavy Face Type Only.

Piece	Ref.	Description	Drawing Reference
120802	34b	Electric Lamp (12 Volts, .25 amp.) (Single Contact Bayonet Base) for 10-Volt operation. Adapter Ref. 45 must be used with this lamp when applied to this style of Banner Arm.....	B-12409-12
120801	34c	Electric Lamp (10 Volts, .25 amp.) (Single Contact Bayonet Base) for 8-Volt operation. Adapter Ref. 45 must be used with this lamp when applied to this style of Banner Arm.....	B-12409-12
75858	35	Operating Rod, 3' 2 $\frac{3}{4}$ " for Ref. B.....	C-8884-9
80027	36	Screw Jaw for Banner end of Ref. B.....	7742-97
75860	37	Screw Jaw for Mechanism end of Ref. B.....	7742-97
75861	38	Pin, $\frac{3}{8}$ "x2" for Ref. 36.....	8079-91
75811	39	Pin, $\frac{3}{8}$ "x1 $\frac{5}{8}$ " for Ref. 37.....	8079-93
	40	Cotter, $\frac{1}{8}$ "x $\frac{3}{4}$ ".	
	41	Cotter, $\frac{1}{8}$ "x1 $\frac{3}{8}$ ".	
78619	42	Screw Stud, $\frac{9}{16}$ "x4 $\frac{1}{2}$ ".....	8190-343
	43	Rivet, $\frac{1}{8}$ "x $\frac{7}{8}$ " Rd. Hd. I.	
	44	Rivet, $\frac{1}{8}$ "x1 $\frac{1}{8}$ " Rd. Hd. I.	
119806	45	Adapter (Single Contact Bayonet Candelabra to Medium Screw) for use with Lamps Refs. 34b and 34c (not shown).....	9954-57