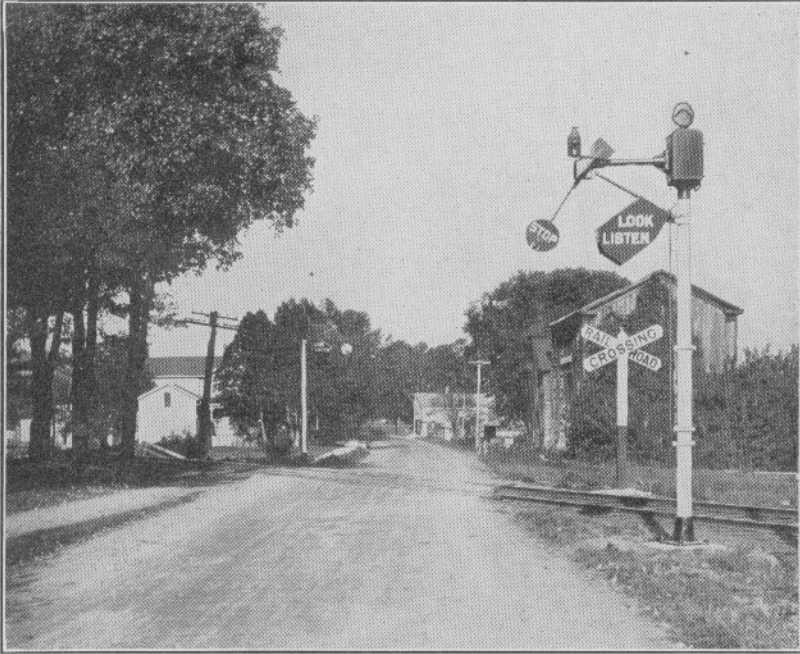


UNION SWITCH & SIGNAL COMPANY



Style "DW" Automatic Flagman

STYLE "DW" AUTOMATIC FLAGMAN

An arrestive indication is displayed by the Union Style DW Automatic Flagman. The mechanism is of the magnetically operated type, substantially constructed and provides three indications, viz., "Stop" (arm swinging), "Clear" (arm held behind shield), and "Out of Order" (arm stationary, suspended vertically). This signal is supplied for operation on either direct or alternating current and may readily be used in combination with bells, crossing signs, or other required attachments. Bulletin No. 86 describes this type of signal and complete catalog references are given on Plates K-1 to K-51 of this catalog.

UNION SWITCH & SIGNAL CO.

STYLE "DW" AUTOMATIC FLAGMAN (D. C.) COMPLETE
For Detail View of Base Casting See Plate K-3

Order by Plate, Piece, Reference and Abbreviated Description Given in Heavy Face Type Only.

Style "DW" Automatic Flagman D. C., complete, Dwg. E-2999 Sh. 5									
Piece	Reference	Distance from bottom of Sig. to center of Extension Arm "Z"	Length of Extension Arm "Y"	D.C. Operating Voltage	Relay Box Ref. "C"	Crossing Bell Ref. "B"	Stationary Lamp	Ladder Ref.	Remarks
79595	A	15' 0"	4' 0"	10	With	Without	Without	H	
97098	Aa	"	"	"	"	"	Ref. Da	H	
111707	Ab	"	"	"	Without	"	Without	Without	
112987	Ac	"	"	"	With	"	"	"	Lettered in French and English
113623	Ad	"	"	8	Without	Arranged for Locomotive Type	"	"	Without Post and Pinnacle
113896	Ae	15' 0"	"	10	With	Without	"	"	Equip'd with Crossing Sign Ref. Bb, Pl. K-97 Clamps for 5" Pipe
116743	Af	"	"	"	Without	With	Arranged for Oil Lamp	Ha	With Mask Ref. Da and L. B. Ref. 4a
126826	Ag	"	"	"	"	Without	Highway Crossing Light	Without	Lamp Unit Ref. Aa, Pl. K-107
75875	Ah	18' 5"	6'	"	With	"	Without	"	
76414	Aj	17' 7"	"	"	"	"	"	"	
76415	Ak	16' 10"	"	8	"	"	"	"	Arranged for Crossing Bell No. 222B
120582	Am	19' 0"	"	10	"	"	Arranged for Oil Lamp	Ha	
117159	An	20' 0"	"	"	Without	"	Without	Hb	With Ladder Platform and Hand Rail

PLATE K-1

UNION SWITCH & SIGNAL CO.

STYLE "DW" AUTOMATIC FLAGMAN (D. C.) COMPLETE

For Detail View of Base Casting See Plate K-3

(Continued)

Order by Plate, Piece, Reference and Abbreviated Description Given in Heavy Face Type Only.

Piece	Ref.	Description	Drawing Reference
	B	Crossing Bell (See Plates K-80 D.C. and K-91 A.C.)	
119555	C	Relay Box.....	C-7976-20
111566	D	Stationary Oil Burning Lamp, with $\frac{7}{16}$ " x $2\frac{1}{16}$ " Socket for $\frac{3}{8}$ " x 2" Bracket.....	B-9224-3
112157	Da	Stationary Oil Burning Lamp, with $\frac{9}{16}$ " x $2\frac{1}{16}$ " Socket for $\frac{1}{2}$ " x 2" Bracket.....	B-9224-27
113725	E	Stationary Electric Lamp, with Two Red Lenses with $\frac{9}{16}$ " x $2\frac{1}{16}$ " Socket for $\frac{1}{2}$ " x 2" Bracket (without Bulb).....	B-9224-39
	F	Stationary Style "HC-2" Electric Lamp Unit with Mounting Fittings and Lamp Bulb Ref. 13 as shown.....	E-2999-1
125760	Fa	Stationary Style "HC-2" Electric Lamp Unit for Ref. F (without Mounting Fittings and Lamp Bulb) ..	C-8965-18
78713	G	Mask for Stationary Lamp.....	C-8884-6
97094	H	Ladder, 7' 9" long with Stays for Refs. A and Aa . . .	B-10313-183
119966	Ha	Ladder, 11' 4" long with Stays for Refs. Af and Am..	B-10313-304
114447	Hb	Ladder, 17' 5" long with Stays for Ref. An.....	B-10313-300
119805	Hc	Platform and Handrail for 5" Pipe for Ref. An (not shown).....	B-10313-300
	J	Two Style "HC-2" Electric Light Units with Adapter and necessary fittings, for mounting on Banner Arm of Style "DW" Automatic Flagman.....	E-2999-4
71278	2	Bracket for attaching Relay Box Ref. C to 5" Post...	C-8034-13
43931	3	"U" Bolt, $\frac{3}{4}$ " with $\frac{3}{4}$ " Hex. Nuts for attaching Bracket Ref. 2 to 5" Pipe Post.....	8782-66

UNION SWITCH & SIGNAL CO.

STYLE "DW" AUTOMATIC FLAGMAN (D. C.) COMPLETE
 For Detail View of Base Casting See Plate K-3
 (Continued)

Order by Plate, Piece, Reference and Abbreviated Description Given in
 Heavy Face Type Only.

Piece	Ref.	Description	Drawing Reference
97005	4	Lamp Bracket, 3/8"x2" for 7/16"x2 1/16" Lamp Socket ...	B-8069-199
97349	4a	Lamp Bracket, 1/2"x2" for 9/16"x2 1/16" Lamp Socket ...	B-8069-234
75131	5	R. H. Arm for Ref. G.....	C-8884-6
75132	5a	L. H. Arm for Ref. G.....	C-8884-6
	6	Rivet, 1/4"x1/2" Rd. Hd. for fastening Ref. G to Refs. 5 and 5a.	
	7	Bolt, 3/8"x2" Hex. Hd. with Hex. Nut for fastening Refs. 5 and 5a to Banner Arm.	
75133	8	Mast only for Ref. G.....	C-8884-6
127968	9	Adapter for Ref. F.....	C-8884-24
	10	Tap Bolt, 1/2"-13x1 1/4" Hex. Hd. S. for attaching Ref. 9 to Banner Arm.	
10276	11	Foundation Bolt, 1"x3' 0" with Std. 1" Plate Washer and 1" Hex. Nut.....	7913-54
95268	12	Electric Lamp (120 Volts, 36 Watts) Medium Screw Base for Ref. E.....	B-12409-6
126729	13	Electric Lamp (10 Volt, 18 Watt) for Ref. F.....	B-12409-16
70957	14	Pinnacle.....	B-8121-14
124372	15	Style "HC-2" Light Unit (without Bulb) for Ref. J (For details refer to Ref. A, Plate K-107).....	C-8965-18
126729	16	Electric Lamp (10 Volt, 18 Watt) for Ref. 15.....	B-12409-16
129116	17	Adapter for Ref. J.....	C-8884-27
	18	Tap Bolt, 1/2"-13x1 1/4" Hex. Hd. for attaching Ref. 17 to Banner Arm.	