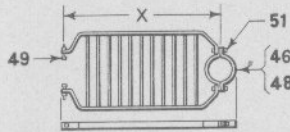
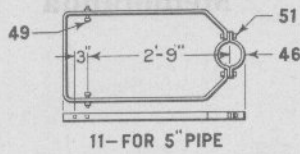
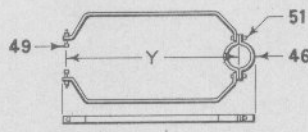


FIG. NO. V

1	10'-0 <sup>3</sup> / <sub>4</sub> "
2	16'-0 <sup>3</sup> / <sub>4</sub> "
3	23'-7 <sup>3</sup> / <sub>4</sub> "
4	30'-5 <sup>3</sup> / <sub>4</sub> "
5	36'-5 <sup>3</sup> / <sub>4</sub> "



15	-FOR 5" PIPE	-----3'-0"
16	-FOR 5" PIPE	-----3'-7"
17	-FOR SWAGED JOINT	3'-7"
18	-FOR SWAGED JOINT	4'-1"



12	-FOR 5" PIPE	3'-0"
13	-FOR 5" PIPE	3'-4"
14	-FOR 5" PIPE	3'-10"

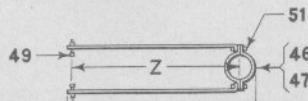


FIG. NO. Z

19	1'-3 <sup>7</sup> / <sub>8</sub> "
20	1'-5"
21	2'-0"
22	2'-1"
23	2'-7 <sup>1</sup> / <sub>4</sub> "
24	2'-8"
25	3'-0"
26	3'-2"
27	3'-3 <sup>1</sup> / <sub>2</sub> "
28	3'-4"
29	3'-7 <sup>1</sup> / <sub>2</sub> "
30	3'-9 <sup>1</sup> / <sub>2</sub> "

FOR 6" PIPE

FIG. NO. Z

31	2'-5 <sup>7</sup> / <sub>8</sub> "
32	3'-0 <sup>3</sup> / <sub>4</sub> "
33	3'-7 <sup>5</sup> / <sub>8</sub> "
34	3'-9 <sup>1</sup> / <sub>2</sub> "
35	4'-3 <sup>1</sup> / <sub>2</sub> "
36	4'-9 <sup>1</sup> / <sub>2</sub> "
37	4'-11 <sup>1</sup> / <sub>2</sub> "
38	5'-3 <sup>1</sup> / <sub>4</sub> "
39	5'-5 <sup>1</sup> / <sub>2</sub> "
40	5'-9 <sup>1</sup> / <sub>4</sub> "

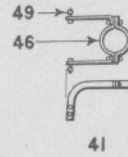


FIG. NO. W

6	10'-0"
7	16'-0"
8	23'-8"
9	30'-6"
10	36'-6"



## Ladders and Ladder Parts

Drawing references are shown for convenience in checking shipping lists and invoices.

Fig. No.	Name	Drawing Reference
<b>Order by plate, figure number and name</b>		
1	Ladder (dimension $V = 10'-0\frac{3}{4}"$ ), includes Top Braces, Spacers and Bolts as shown, for Ladder Complete Fig. 1a.....	33987
1a	Ladder Complete, for One Arm and Two Arm Top of Mast Bracket or Bridge Signals shown on Plate H0302 Fig. F to Fig. K inclusive, Plate H0306, H0311 and H0312 Fig. A to Fig. E inclusive. Includes Hand Rail, Platform, Stay, Clamps and Bolts. (1-1, 1-11, 1-15, 1-25).....	33992
2	Ladder (dimension $V = 16'-0\frac{3}{4}"$ ), includes Top Braces, Spacers and Bolts as shown, for Ladder Complete Fig. 2a.....	33986
2a	Ladder Complete, for High Two Arm and Three Arm Top of Mast Bracket or Bridge Signals shown on Plates H0311 and H0312 Fig. F to Fig. K inclusive, Plates H0317 and H0321 Fig. A to Fig. E inclusive. Includes Hand Rails, Platforms, Stay, Clamps and Bolts. (1-2, 1-11, 1-12, 2-15, 1-25).....	33993
3	Ladder (dimension $V = 23'-7\frac{3}{4}"$ ), includes Top Braces, Spacers and Bolts as shown, for Ladder Complete Fig. 3a..	33985
3a	Ladder Complete, for One Arm Top of Mast Ground Signals shown on Plates H0101 and H0107 Fig. A to Fig. E inclusive. Includes Hand Rail, Platform, Stays, Clamps and Bolts. (1-3, 1-11, 1-15, 1-27, 1-34, 1-35).....	33981
3b	as above, except with Foundation Fig. 42.....	
4	Ladder (dimension $V = 30'-5\frac{3}{4}"$ ), includes Top Braces, Spacers and Bolts as shown, for Ladders Complete Fig. 4a and Fig. 4c	
4a	Ladder Complete, for High One Arm Top of Mast Ground Signals shown on Plates H0101 and H0107 Fig. F to Fig. K inclusive. Includes Hand Rail, Platform, Stays, Clamps and Bolts. (1-4, 1-11, 1-15, 1-28, 1-34, 1-35, 1-36).....	34381
4b	as above, except with Foundation Fig. 42.....	
4c	Ladder Complete, for Two Arm Top of Mast Ground Signals shown on Plates H0111, H0112 and H0117 Fig. A to Fig. E inclusive. Includes Hand Rails, Platforms, Stays, Clamps and Bolts. (1-4, 1-11, 1-13, 1-15, 1-17, 1-34, 1-35, 1-36).....	33982
4d	as above, except with Foundation Fig. 42.....	

# Ladders and Ladder Parts

Drawing references are shown for convenience in checking shipping lists and invoices.

Fig. No.	Name	Drawing Reference
<b>Order by plate, figure number and name</b>		
5	Ladder (dimension V = 36'-5 $\frac{3}{4}$ " ), includes Top Braces, Spacers and Bolts as shown, for Ladders Complete Fig. 5a and Fig. 5c	
5a	Ladder Complete, for High Two Arm Top of Mast Ground Signals shown on Plates H0111, H0112 and H0117 Fig. F to Fig. K inclusive. Includes Hand Rails, Platforms, Stays, Clamps and Bolts. (1-5, 1-11, 1-13, 1-15, 1-16, 1-30, 1-35, 1-36, 1-38).....	41919
5b	as above, except with Foundation Fig. 42.....	
5c	Ladder Complete, for Three Arm Top of Mast Ground Signals shown on Plate H0121. Includes Hand Rails, Platforms, Stays, Clamps and Bolts. (1-5, 1-11, 1-13, 1-14, 1-15, 1-16, 1-18, 1-35, 1-36, 1-38).....	33983
5d	as above, except with Foundation Fig. 42.....	
6	Ladder (dimension W = 10'-0" ), for Ladder Complete Fig. 6a.	44582
6a	Ladder Complete, for One Arm Base of Mast Bracket or Bridge Signals shown on Plates H0401 and H0407 Fig. A to Fig. C inclusive. Includes Top Pieces, Stays, Clamps and Bolts. (1-6, 1-20, 1-41).....	42000
7	Ladder (dimension W = 16'-0" ), for Ladder Complete Fig. 7a.	44583
7a	Ladder Complete, for High One Arm and Two Arm Base of Mast Bracket or Bridge Signals shown on Plate H0401 Fig. D to Fig. F inclusive, Plate H0411 Fig. A to Fig. F inclusive and Plate H0421 Fig. A to Fig. C inclusive. Includes Top Pieces, Stays, Clamps and Bolts. (1-7, 1-19, 1-22, 1-41).....	42001
8	Ladder (dimension W = 23'-8" ), for Ladder Complete Fig. 8a.	42004
8a	Ladder Complete, for One Arm Base of Mast Ground Signals shown on Plates H0201 and H0207. Includes Top Pieces, Stays, Clamps and Bolts. (1-8, 1-20, 1-22, 1-41).....	42008
8b	as above, except with Foundation Fig. 42.....	
9	Ladder (dimension W = 30'-6" ), for Ladders Complete Fig. 9a and Fig. 9c.....	

March 1916

GENERAL RAILWAY SIGNAL COMPANY

Ladders and Ladder Parts

Drawing references are shown for convenience in checking shipping lists and invoices.

Fig. No.	Name	Drawing Reference
<b>Order by plate, figure number and name</b>		
9a	Ladder Complete, for High One Arm Base of Mast Ground Signals shown on Plates H0202 and H0208. Includes Top Pieces, Stays, Clamps and Bolts. (1-9, 1-20, 1-21, 1-23, 1-41)	
9b	as above, except with Foundation Fig. 42. ....	
9c	Ladder Complete, for Two Arm Ground Signals shown on Plate H0211, H0213 and H0221. Includes Top Pieces, Stays, Clamps and Bolts. (1-9, 1-20, 1-22, 1-24, 1-41).....	42007
9d	as above, except with Foundation Fig. 42. ....	
10	Ladder (dimension W = 36'-6"), for Ladder Complete Fig. 10a.	
10a	Ladder Complete, for High Two Arm Base of Mast Ground Signals shown on Plates H0212, H0214 and H0222. Includes Top Pieces, Stays, Clamps and Bolts. (1-10, 1-20, 1-22, 1-24, 1-26, 1-41).....	42002
10b	as above, except with Foundation Fig. 42. ....	
11	Top Hand Rail Complete as shown (2'-9" or 3'-0" center of mast to center of ladder), includes Bolts and Clamp for 5" pipe.....	
12	Second Hand Rail Complete (dimension Y = 3'-0"), includes Bolts and Clamp for 5" pipe.....	
13	Second Hand Rail Complete as shown (dimension Y = 3'-4"), includes Bolts and Clamp for 5" pipe.....	
14	Third Hand Rail Complete (dimension Y = 3'-10"), includes Bolts and Clamp for 5" pipe.....	
15	Top Platform Complete as shown (dimension X = 3'-0"), includes Bolts and Clamp for 5" pipe.....	
16	Second Platform Complete (dimension X = 3'-7"), includes Bolts and Clamps for 5" pipe.....	
17	Second Platform Complete (dimension X = 3'-7"), includes Bolts and Clamp for swaged joint on 5" and 6" pipe.....	
18	Third Platform Complete (dimension X = 4'-1"), includes Bolts and Clamp for swaged joint on 5" and 6" pipe.....	

# Ladders and Ladder Parts

Drawing references are shown for convenience in checking shipping lists and invoices.

Fig. No.	Name	Drawing Reference
<b>Order by plate, figure number and name</b>		
19	Stay Complete as shown (dimension $Z = 1'-3\frac{7}{8}"$ ), includes Bolts and Clamp for 5" pipe.	
20	same as Fig. 19, except dimension $Z = 1'-5"$	
21	same as Fig. 19, except dimension $Z = 2'-0"$	
22	same as Fig. 19, except dimension $Z = 2'-1"$	
23	same as Fig. 19, except dimension $Z = 2'-7\frac{1}{4}"$	
24	same as Fig. 19, except dimension $Z = 2'-8"$	
25	same as Fig. 19, except dimension $Z = 3'-0"$	
26	same as Fig. 19, except dimension $Z = 3'-2"$	
27	same as Fig. 19, except dimension $Z = 3'-3\frac{1}{2}"$	
28	same as Fig. 19, except dimension $Z = 3'-4"$	
29	same as Fig. 19, except dimension $Z = 3'-7\frac{1}{2}"$	
30	same as Fig. 19, except dimension $Z = 3'-9\frac{1}{2}"$	
31	Stay Complete (dimension $Z = 2'-5\frac{7}{8}"$ ), includes Bolts and Clamp for 6" pipe.	
32	same as Fig. 31, except dimension $Z = 3'-0\frac{3}{8}"$	
33	same as Fig. 31, except dimension $Z = 3'-7\frac{3}{8}"$	
34	same as Fig. 31, except dimension $Z = 3'-9\frac{1}{2}"$	
35	same as Fig. 31, except dimension $Z = 4'-3\frac{1}{2}"$	
36	same as Fig. 31, except dimension $Z = 4'-9\frac{1}{2}"$	
37	same as Fig. 31, except dimension $Z = 4'-11\frac{1}{2}"$	
38	same as Fig. 31, except dimension $Z = 5'-3\frac{1}{4}"$	
39	same as Fig. 31, except dimension $Z = 5'-5\frac{3}{8}"$	
40	same as Fig. 31, except dimension $Z = 5'-9\frac{1}{4}"$	
41	Top Piece Complete as shown, for Ladders Fig. 6 to Fig. 10b inclusive. Includes Bolts and Clamp for 5" pipe.	
42	Ladder Foundation, includes two $\frac{1}{2}" \times 1\frac{1}{2}"$ sq. hd. Bolts with sq. Nuts. R. S. A. Std.	
42a	Ladder Foundation only. R. S. A. Std.	36773
43	Brace, for top of Ladders.	
44	Spacer, $2\frac{1}{4}"$ long, for top of Ladders.	33984
45	Spacer, 8" long, for top of Ladders.	33980
46	Clamp, for 5" pipe, two pieces, with two $\frac{1}{2}" \times 1\frac{3}{8}"$ sq. hd. Bolts with sq. Nuts.	33495

## Ladders and Ladder Parts

Drawing references are shown for convenience in checking shipping lists and invoices.

Fig. No.	Name	Drawing Reference
<b>Order by plate, figure number and name</b>		
47	Clamp, for 6" pipe, two pieces, with two $\frac{1}{2}$ " x $1\frac{3}{4}$ " sq. hd. Bolts with sq. Nuts.....	33496
48	Clamp, for swaged joint on 5" and 6" pipe, two pieces with two $\frac{1}{2}$ " x $1\frac{3}{4}$ " sq. hd. Bolts with sq. Nuts.....	33501
49	Bolt, $\frac{1}{2}$ " x 1" sq. hd. with sq. Nut, for Ladders.....	09
50	Bolt, $\frac{1}{2}$ " x $1\frac{1}{2}$ " sq. hd. with sq. Nut, for top of Ladders Fig. 1 to Fig. 5d inclusive.....	34258
51	Bolt, $\frac{1}{2}$ " x $1\frac{3}{4}$ " sq. hd. with sq. Nut, for Clamps.....	0390
52	Bolt, $\frac{1}{2}$ " x $1\frac{1}{2}$ " sq. hd. with sq. Nut, for Ladder Foundation Fig. 42.....	010