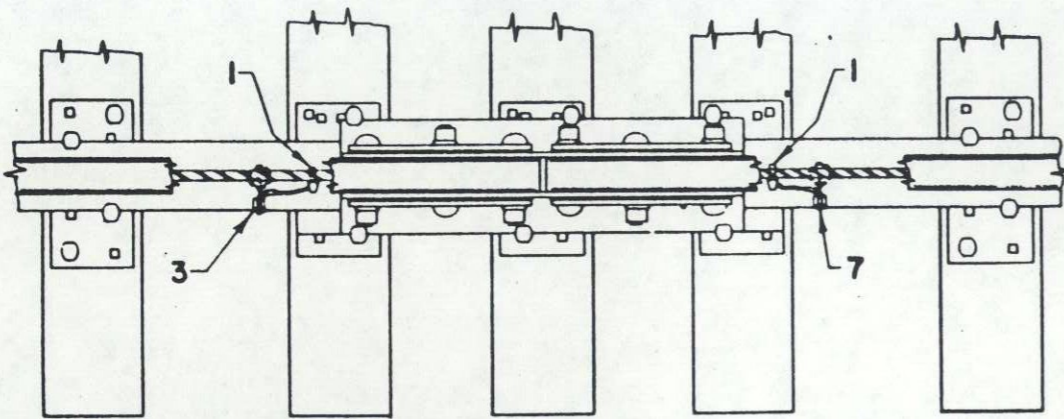
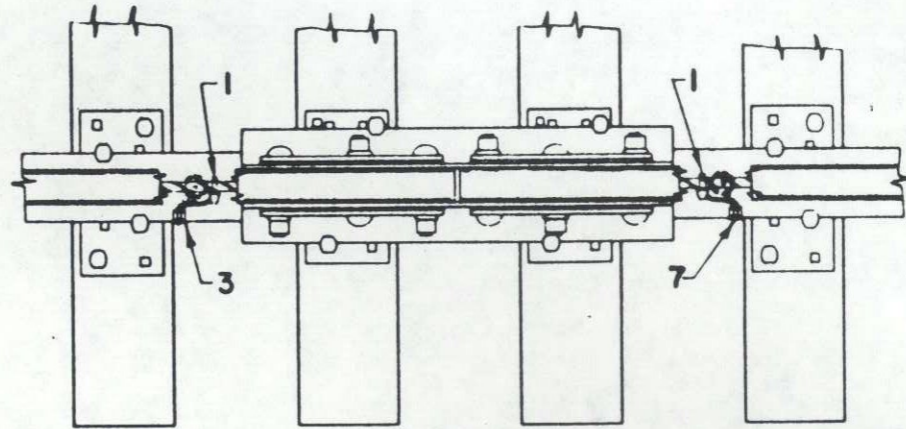


Rev. A-3-3-82: changed from strap to plug type connector, added details of plug type connector, changed acct no. of item

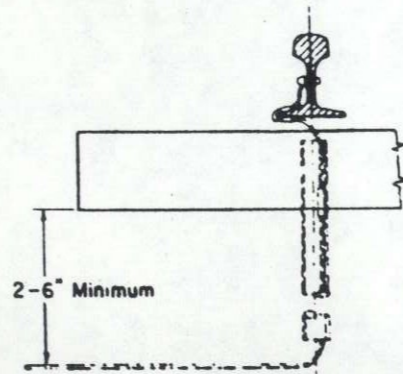
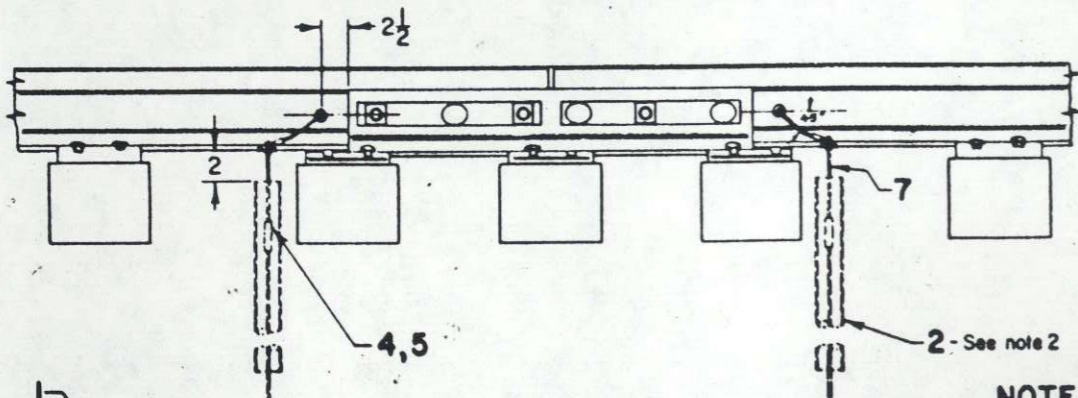
Rev. B-1-18-83: added tension clips
 Rev. C-1-23-85 added sheet 2 & note 3.
 Rev. D-8-17-87 added retainer clip



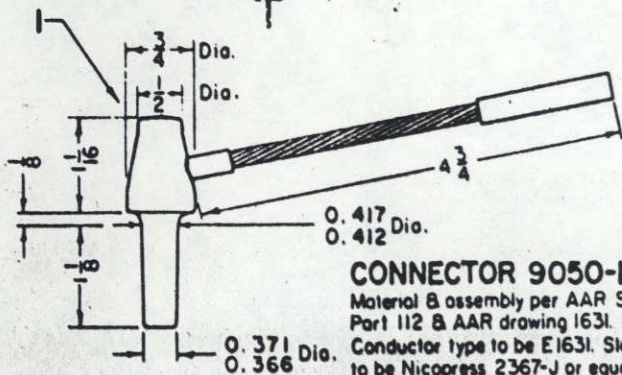
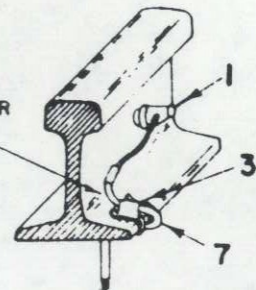
SUPPORTED JOINT



SUSPENDED JOINT



TRACK WIRE RETAINER CLIP APPLICATION



CONNECTOR 9050-1

Material & assembly per AAR Spec. Part 112 & AAR drawing 1631.
 Conductor type to be E1631. Sleeve to be Nicopress 2367-J or equal
 Connector to be tinned per AAR Spec. Part 112.

NOTES:

1. Track circuit connections shown on this plan are typical for all types of track circuits where standard insulated joints, glued insulated joints, or no insulated joints are involved except in third rail territory.
2. Whenever possible, use second-hand air brake hose for item 2 instead of using new hose. Minimum length required is 22".
3. Applies only to installation of series overlay track circuit used with D.E.D.

ITEM	NAME	REF	REQ.	ACCT NO.
1	CONNECTOR		4	02-150603
2	HOSE, 2" COLD WATER		4	46-431957
3	CLIP, RETAINER		4	02-729208
4	SLEEVE-#6 TO STRAND		4	02-842100
5	SLEEVE-#9 TO STRAND		4	02-842126
6				
7	STRAND, INSUL'D, BLACK			02-555856

SHEET 1
 CONT'D ON SH 2

CONRAIL

CS-9050-D

STANDARD
TYPICAL TRACK CIRCUIT CONNECTIONS
 FOR USE IN ALL AREAS
 EXCEPT THIRD RAIL TERRITORIES

NOV 29, 1976

Approved: *B. J. Thompson*
 Chief Engineer CBS

Rev. Aug. 17, 1987

136