

ITEM	APPLICATION	STANDARD ACCOUNT NUMBER	VOLTS	WATTS	TOTAL WATT TOLER.	BULB	BASE	FILAMENT			INITIAL LUMENS	INITIAL LUMENS PER WATT	LUMENS PER WATT TOLER.	MIN. LIFE HRS. AT SERVICE VOLTS	SERVICE VOLTAGE	CHANGE OUT PERIOD	TYPE LIGHTING
								TOLERANCE		SHAPE							
								LCL	LCL-AA								
1	DOUBLET LENS - CLT. (GRS)	49-423492	10.0	18W	±0.9	A-15	3 PS.	2-3/16"	1/64"	CC-6	250	12.5	±1.5	2200	9.5	3 Mos.	Cont. lighted
	DOUBLET LENS - CLT. (GRS)	9.5	1 Year	App. lighted
2	DOUBLET LENS - CLT. (US&S)	49-423468	10.0	18W	±0.9	A-15	2 PS.	2-7/32"	1/64"	CC-6	250	12.5	±1.5	2200	9.5	3 Mos.	Cont. lighted
	DOUBLET LENS - CLT. (US&S)	9.5	1 Year	App. lighted
3	DOUBLET LENS - CLT.	49-406745	10.0	20W	±0.9	S-11	SC.	1-1/4"	1/64"	CC-6	250	12.5	±1.5	2200	9.5	3 Mos.	Cont. lighted
	DOUBLET LENS - CLT.	9.5	1 Year	App. lighted
	SLT., SEM.	4400	8.3	6 Mos.	Cont. lighted
	SLT., SEM.	8.3	2 Years	App. lighted
	SL., MC.	8.3	Burnout	
	PLT. (RED LENS)	8.5	Burnout	
	XING., CGA.	2200	9.5	Burnout	
	PLT/(PL-3)	8800	6.5	Burnout	
4	UNILENS - CLT. (SAFETRAN)	49-407628	10.0	25W	±1.0	SPCL	SC.	1-11/16"	.010"	CC-6	393	15.7	±1.5	2200	9.5	3 Mos.	Cont. lighted
	UNILENS - CLT. (SAFETRAN)	9.5	1 Year	App. lighted
5	PLT (PL-1)	49-402652	12.0	9W	±0.5	G-16.5	2 PS.	1.91"	1/64"	C-2R	96	10.7	±1.3	4400	11.0	Burnout	
6	PLT. (4) DOUBLE FILAMENT	49-386459	12.0	18&5W	±0.9	S-11	SC.	1-1/4"	1/32"	CC-6 CC-6A	285	15.8	±1.5	2200	11.0	BURNOUT OF MF	
	PLT. (4) SINGLE FILAMENT	49-390204	12.8	18W	±0.9	S-8	SC.	1-1/4"	.04"-.03"	C-6	265	14.7	±1.3	2200	11.0	Burnout	


TOLERANCE - Plus or minus dimensions in inches allowed on light center length (LCL) and axial alignment (AA). Where two dimensions are shown, the first applies to LCL and the second to AA. Where no tolerance is shown, manufacturer's standard to apply.

54

REV	DATE	BY

See Notes On Sheets 2 & 3

SHEET 1
CONT'D ON SH 2

CONRAIL  CS-4000-B

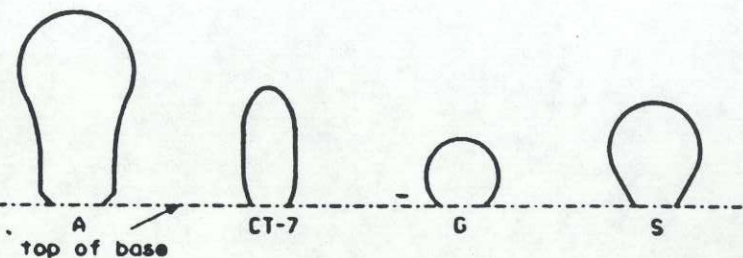
STANDARD
ELECTRIC LAMPS

Approved *[Signature]*
Chief Engineer CS

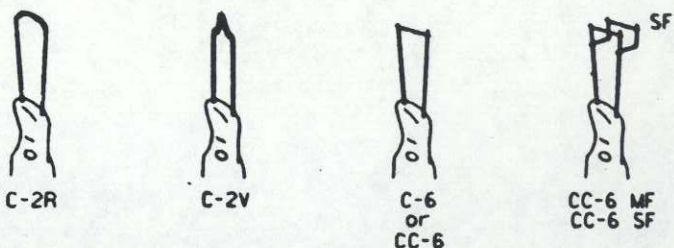
[Signature]
Chief Engineering Officer

ISSUE DATE: APR. 15, 1960

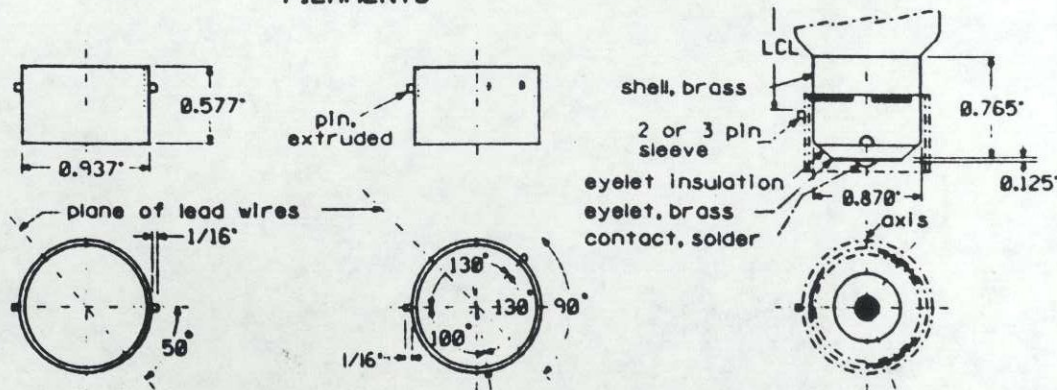
Rev. FEB. 24, 1960



BULB TYPICALS



FILAMENTS



2 pin sleeve-bronze
2 PS

3 pin sleeve-bronze
3 PS

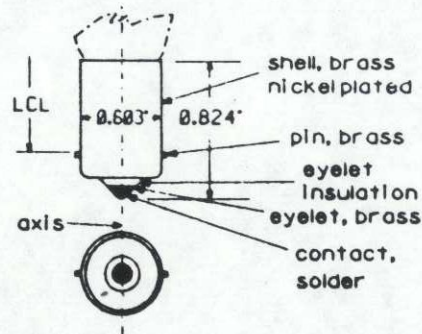
Sleeve securely soldered to base at top 3 points 120°.

After assembly to lamp check with ring gauges for 0.938" \pm 0.001 and 0.934" \pm 0.001.

rebased 1825 type with 2 or 3 pin sleeve

BASES

base pins at 90° to plane of lead wires



single contact bayonet type
SC

NOTES:

BULB SHAPES:

The shapes of lamp bulbs are designated by letters as shown. The sizes of lamp bulbs are designated by numbers following the letter as (A-15, S-11, etc.). The number represents the maximum bulb diameter in eighths of an inch. Example: S-11 = 11/8" = 1-3/8" diameter. All bulbs are clear lead or lime glass and are type C gas filled.

FILAMENTS:

The mounting of tungsten filaments is designated by an identification prefix letter, a number and sometimes a suffix letter. The prefix letter indicates whether the filament is straight wire(s), coiled (c), or coiled coil (cc). The number indicates the form or arrangement of the filament on the supports. C-2 suffix 'R' indicates rounded form and 'V' indicates 'V' shape. Two identical filaments in multiple have a prefix '2', thus 2 C-2V. The letters 'MF' indicate major filament, and 'SF' secondary filament.

BASES:

Bayonet base light center length (LCL) is the distance from the top of the base pin to the light center of the filament.

55

REV	DATE	BY

SHEET 2
CONT'D ON SH 3

CONRAIL CS-4000-A

STANDARD
ELECTRIC LAMPS

ISSUE DATE: JAN. 26, 1987

Rev. FEB. 24, 1988

SHEET

NOTES:

1. All lamps on sheet 1 are to be according to CONRAIL specifications CS-4000.

LAMP APPLICATION ABBREVIATIONS

CGA. Crossing gate arm	HCD. High car detector	PLT. Position light signal	SL. Switch lamp
CLT. Color light signal	IND. Indication	PD. Presence detector	SLT. Searchlight signal
ESL. Electric switch lock	MC. Maintainer's call	SEM. Semaphore	XNG. Crossing


LAMP BASE ABBREVIATIONS

BMIN. Bayonet-miniature, single contact	SMIN. Screw miniature
DC. Bayonet-candelabra, double contact	SMED. Screw medium
2PS. Two pin rebased sleeve for US&S sockets	3PS. Three pin rebased sleeve for GRS
SL-1. Telephone slide base No.1	SL-2. Telephone slide base No.2
SCRTER. Screw terminal	SUMFL. Sub-midget flanged
SC. Bayonet-candelabra, single contact	SMIDFL. Single contact midget flanged

56

REV	DATE	BY

CSG CAD


SHEET 3 CONT'D ON SH 4	CONRAIL 	CS-4000-A
STANDARD ELECTRIC LAMPS		
ISSUE DATE: APR. 15, 1988		
Rev. FEB. 74, 1988		

APPLICATION	STANDARD ACCOUNT NUMBER	LAMP NUMBER	VOLTS	CP AMPS WATTS	SERVICE VOLTAGE	BULB	BASE	FILA.	CHANGE OUT PERIOD	CONRAIL SPECIFICATIONS	REMARKS
MODEL BOARD IND.	49-400482	682	5.0	.06A		T-1	SUMFL.	C-2R	Burnout	Am.National Stds.Inst.	
COMPUTER POWER IND. PANEL	49-398009	328	6.0	.2A		T-1-3/4	SMIDFL.	C-2R	Burnout	Am.National Stds.Inst.	
CONTROL MACHINE	49-396656	40	6.3	.15A		T3-1/4	SMIN.	C-2R	Burnout	Am.National Stds.Inst.	IND.
HCD. & PD.	49-402876	4515	6.4	30W		SB	SCRTER.	C-6	Burnout	Am.National Stds.Inst.	SEALED BEAM
STYLE 'S' SEM. SIGNAL	49-387358	55	7.0	.41A		G4-1/2	BMIN.	C-2R	Burnout	Am.National Stds.Inst.	
COMPUTER SHARONVILLE YARD	49-426305	344	10.0	.014A		T-1-3/4	SMIDFL.	C-2F	Burnout	Am.National Stds.Inst.	IND.
SWITCH IND. ENOLA YARD	49-394404	12E5	12.0	.35A		T-2	SL-5.	C-2F	Burnout	Am.National Stds.Inst.	
TRACK IND. PANEL	49-393505	12A1	12.0	.10A		T-2	SL-1.	C-2F	Burnout	Am.National Stds.Inst.	
MODEL '10' ESL. IND.	49-386152	45	12.0	.25A	9.5	S-8	SC.	C-2R	Burnout	Am.National Stds.Inst.	
MODEL BOARD IND.	49-387804	68	13.5	.59A	10.3	G-6	DC.	C-2R	Burnout	Am.National Stds.Inst.	
EMERGENCY CONTROL PANEL	49-395500	330	14.0	.08A		T-1-3/4	SMIDFL.	C-2F	Burnout	Am.National Stds.Inst.	
CONTROL MACHINE CONWAY	49-398165	1815	14.0	.20A		T3-1/4	BMIN.	C-2F	Burnout	Am.National Stds.Inst.	IND.
TRACK IND.	49-388109	71M	22.0	3CP	18.0	G-6	SMIN	C-2V	Burnout	Am.National Stds.Inst.	
MODEL BOARD IND.	49-393950	24X	24.0	.035A		T-2	SL-2.	C-2F	Burnout	Am.National Stds.Inst.	
EMERGENCY CONTROL PANEL IND.	49-400375	387	28.0	.04A		T-1-3/4	SMIDFL.	C-2F	Burnout	Am.National Stds.Inst.	
COMPUTER CONSOL TEST PANEL	49-395211	327	28.0	.04A		T-1-3/4	SMIDFL.	C-2F	Burnout	Am.National Stds.Inst.	IND.
IND., PANELS-CP POINTS	49-395609	1822	36.0	.10A		T3-1/4	BMIN.	C-2F	Burnout	Am.National Stds.Inst.	
SYNCR SCAN IND.	49-429358	NE51	115.0	.04W		T3-1/4	BMIN.		Burnout	Am.National Stds.Inst.	
POWER OFF IND.	49-403700	10S14	120.0	10W		S-14	SMED.	C-9	Burnout	Am.National Stds.Inst.	
TRAFFIC SIGNALS	49-410374	60A21/TS	125.0	60W		A-21	SMED.	C-9	Burnout	Am.National Stds.Inst.	

• special slide base

See Notes On Sheets 2 & 3

SHEET 4
CONT'D ON SH 5

CONRAIL  CS-4000-A

STANDARD
ELECTRIC LAMPS

ISSUE DATE: APR. 15, 1988

Rev. FEB. 24, 1988

57

REV	DATE	BY