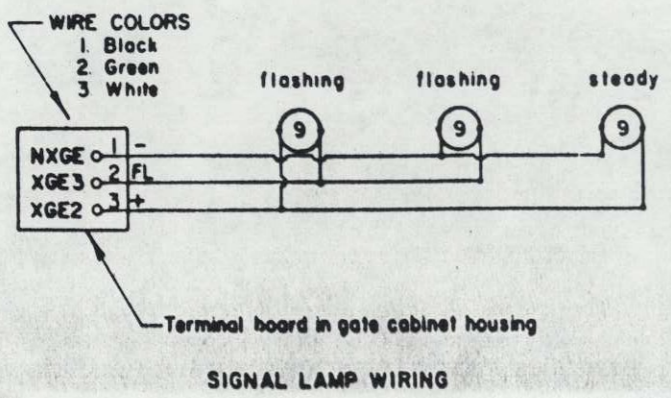
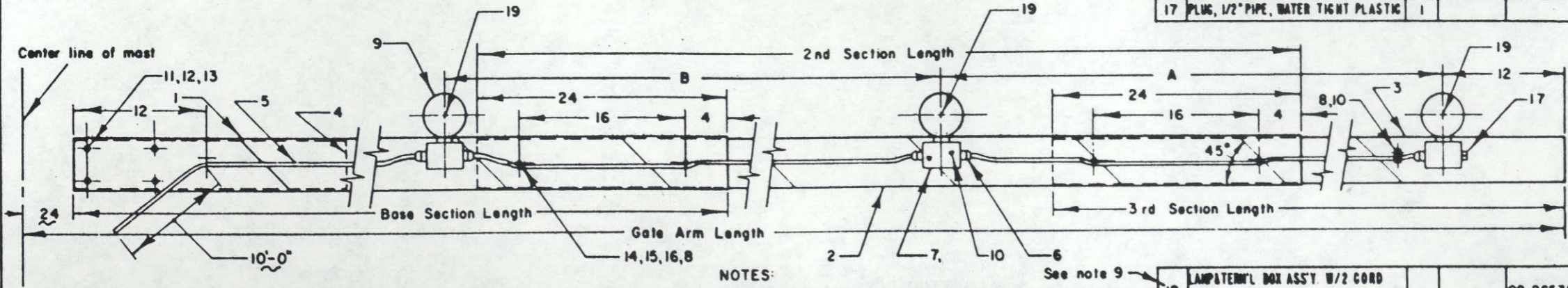


GATE ARM LENGTH	BASE SECTION LENGTH	2ND SECTION LENGTH	SLEEVE LENGTH	ACCT. NO.	GATE ARM LENGTH	BASE SECTION LENGTH	2ND SECTION LENGTH	3RD SECTION LENGTH	SLEEVE LENGTH	ACCT. NO.
13'-0"	11'-0"		4'-0"	*	27'-0"	16'-0"	11'-0"		8'-0"	*
14'-0"	12'-0"		4'-0"	02-014676	28'-0"	16'-0"	12'-0"		8'-0"	02-012639
15'-0"	13'-0"		4'-0"	*	29'-0"	16'-0"	10'-0"	5'-0"	8'-0"	*
16'-0"	14'-0"		4'-0"	02-012514	30'-0"	16'-0"	10'-0"	6'-0"	8'-0"	02-012829
17'-0"	15'-0"		4'-0"	*	31'-0"	16'-0"	10'-0"	7'-0"	8'-0"	*
18'-0"	16'-0"		4'-0"	02-012522	32'-0"	16'-0"	10'-0"	8'-0"	8'-0"	02-012613
19'-0"	15'-0"	4'-0"	4'-0"	*	33'-0"	16'-0"	10'-0"	9'-0"	8'-0"	*
20'-0"	16'-0"	4'-0"	4'-0"	02-012548	34'-0"	16'-0"	10'-0"	10'-0"	8'-0"	02-012845
21'-0"	16'-0"	5'-0"	4'-0"	*	35'-0"	16'-0"	12'-0"	9'-0"	8'-0"	*
22'-0"	16'-0"	6'-0"	4'-0"	02-014718	36'-0"	16'-0"	12'-0"	10'-0"	8'-0"	02-012860
23'-0"	16'-0"	7'-0"	8'-0"	*	37'-0"	16'-0"	12'-0"	11'-0"	8'-0"	*
24'-0"	16'-0"	8'-0"	8'-0"	02-012563	38'-0"	16'-0"	12'-0"	12'-0"	8'-0"	02-012886
25'-0"	16'-0"	9'-0"	8'-0"	*						
26'-0"	16'-0"	10'-0"	8'-0"	02-012589						

ITEM	NAME	REQ	REF	ACCT NO
1	Base section	1	See sh 3	
2	Second section		See sh 3	
3	Third section		See sh 3	
4	Sleeve	1	See sh 3	
5	Cable, 3 cond'r, AWG 16, 300xSJO			49-190105
6	Connector, cable, 1/2" hub	5		49-254418
7	Box, terminal	3	1003-1	
8	Strap, cable		1003-28	
9	Light assembly, 4", with term. box	3		02-286365
10	SCREW, SHEETMETAL, #0 X 3/4 LG TYPE F			
11	Bolt, 3/8"-16X2-3/4 hex hd.			
12	Locknut, 3/8"-16 hex.			
13	Washer, 3/8" flat			
14	Bolt, 1/4"-20X2-3/4 hex hd			
15	Locknut, 1/4"-20 hex.			
16	Washer, 1/4" flat			
17	PLUG, 1/2" PIPE, WATER TIGHT PLASTIC	1		

* - Cut from next larger assembly.



SIGNAL LAMP WIRING

NOTES:

- Fiberglass reinforced polyglass to be made by pultrusion process & have a smooth surface finish. White color to be impregnated. Longitudinal tensile strength to be no less than 30,000 P.S.I. and transverse tensile strength to be no less than 7,000 P.S.I. per ASTM D-638. Density to be 0.063 to 0.065 lbs per cu. in. Twist to be less than 1/2" per ft, not to exceed 5° total for 16' section. Bow not to exceed 5/8" per 16' section.
- Gate order numbers shown above are complete assemblies. See sheets 3 & 4 for section replacement order numbers.
- Gate light terminal boxes to be watertight.
- Anodized coating thickness to be Exterior Commercial standard No. 1 which is 0.000225" to 0.000275".
- Apply alternate red & white engineering grade reflex reflective sheeting to each side of gate arm at 16" intervals starting at base. Sheeting not required 2'-0" from butt end, except for base section. See sheet 4.
- Cable straps, item 8, to be installed on 18" centers & with item 14. Use No. 28 drill for holes for No. 8 sheet metal screws, item 10.
- All hardware to be cadmium plated.

See note 9

18	LAMP & TERM'L BOX ASSY. W/2 CORD CONNECTORS & NTC SCREWS, ITEMS 6, 7, 9, 10			02-265385
19	Lamp, 10V-18V	3	4000-3	49-407453

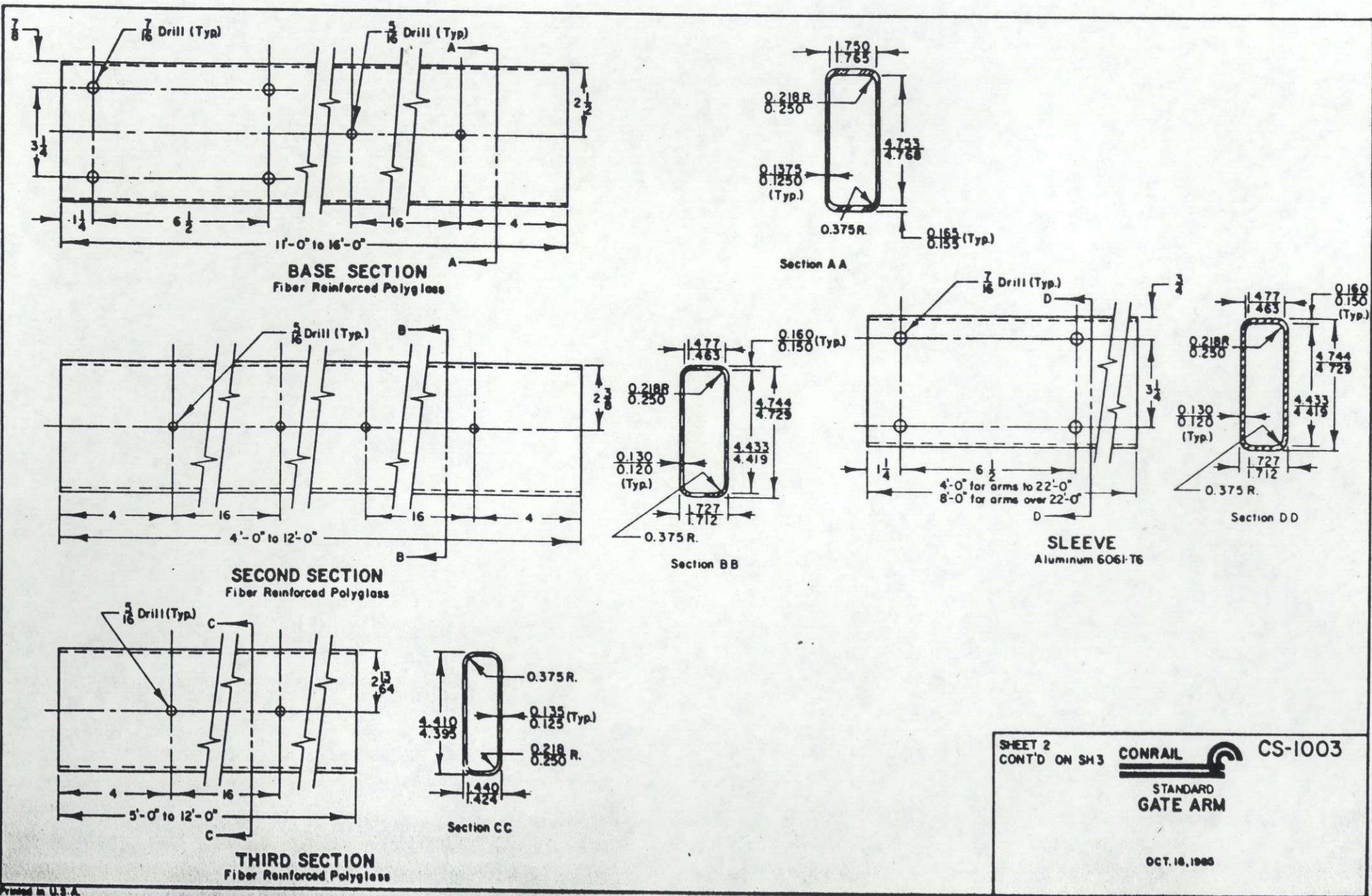
- Light location dimensions A & B to be determined from field location conditions.
- Item 18 shown for maintenance purposes only
- Gate arms to be furnished less lamps

SHEET 1
 CONT'D ON SH 2

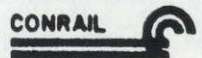


CS-1003-A

Approved: *[Signature]*
 OCT. 18, 1986
 Chief Engineer



SHEET 2
CONT'D ON SH 3



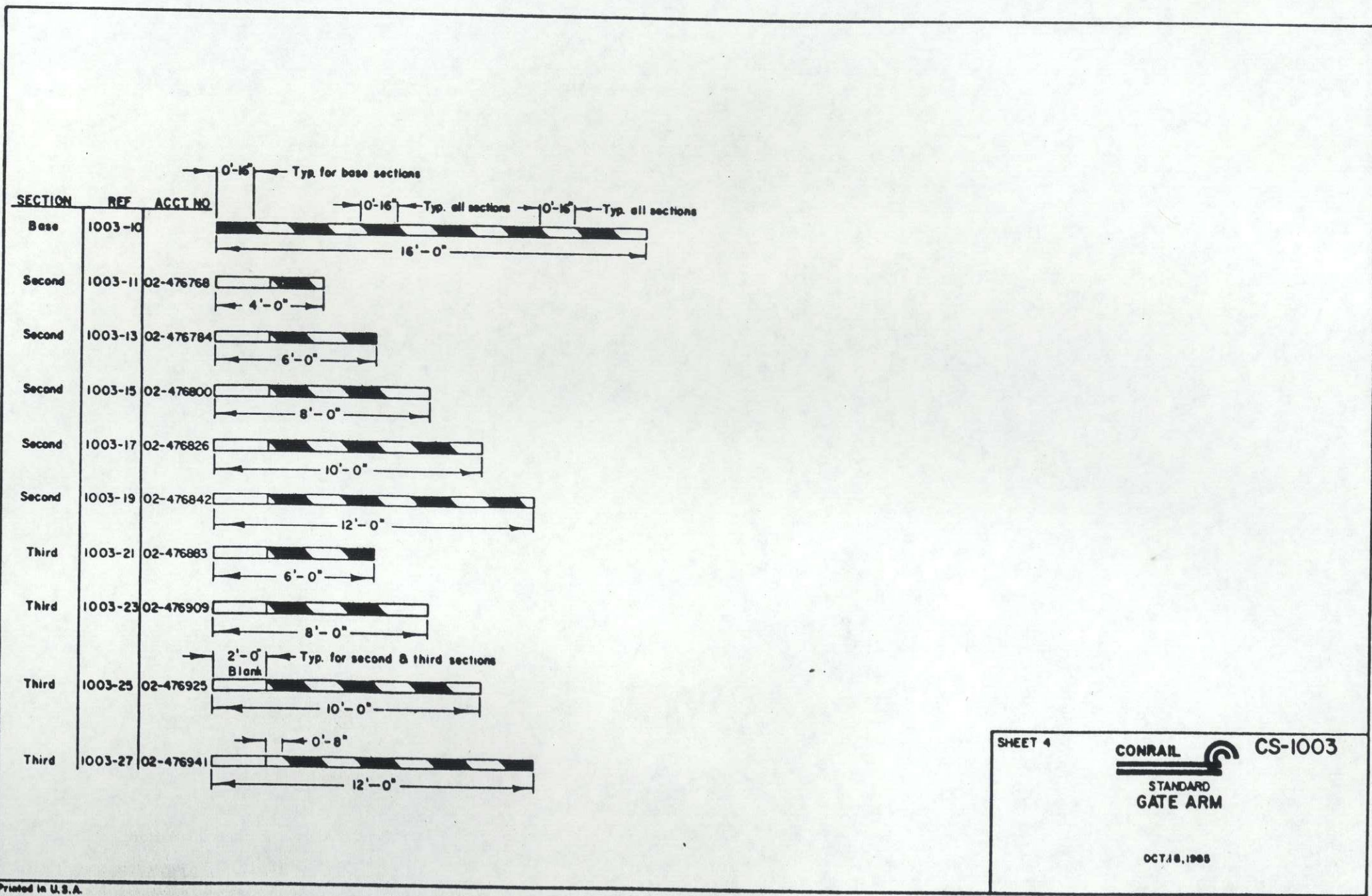
CS-1003

STANDARD
GATE ARM

OCT. 16, 1968

14

Printed in U.S.A.



16

Printed in U.S.A.

SHEET 4

CONRAIL  CS-1003

STANDARD GATE ARM

OCT. 18, 1988