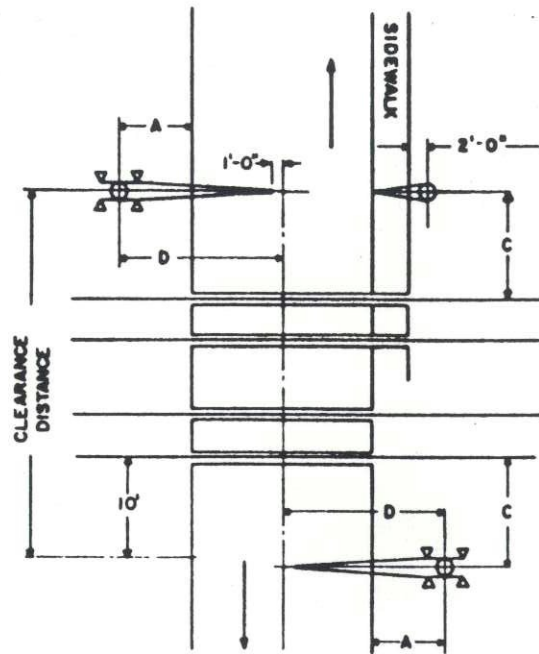
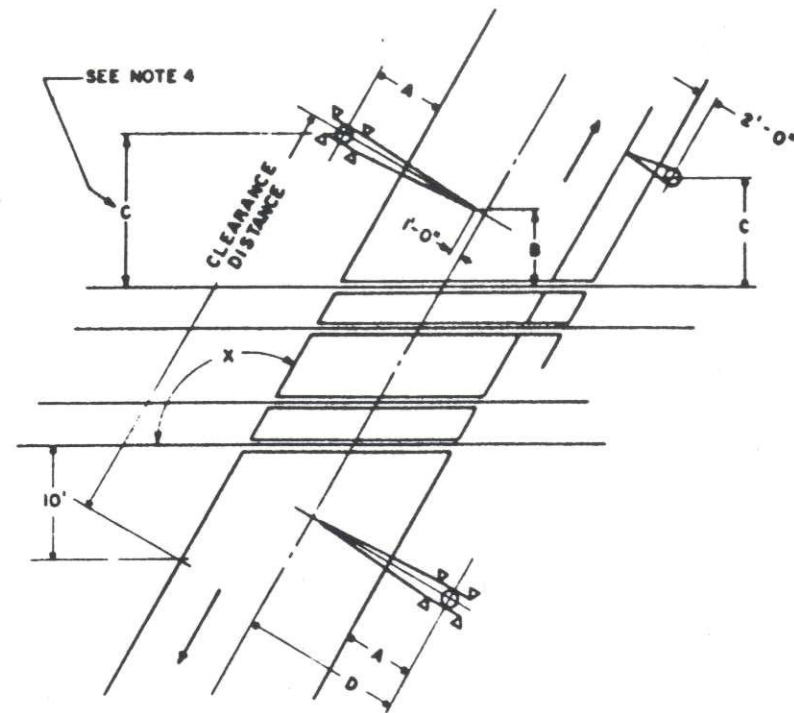


ACUTE ANGLE CROSSING



RIGHT ANGLE CROSSING



OBTUSE ANGLE CROSSING

AUTHORITY	A	B	C	D
CONRAIL PREFERRED	4'-1" MIN. WITH CURBS ; OR 8'-1" MIN. FROM TRAVELLED ROAD WITH NO CURBS	7' - 8" MIN.	12' - 0"	
MUTCD	3'-0" FROM CURB 6'-0" FROM EDGE OF HIGHWAY	7' - 8"	9' - 8"	
CANADA				18' - 0" MIN.
CONNECTICUT				
DELAWARE				
INDIANA	4' - 1" FROM CURB			
ILLINOIS	4' - 1" FROM CURB 8' - 1" FROM EDGE OF HIGHWAY	12' - 0"	10' MIN. 15' MAX.	
MARYLAND				
MASSACHUSETTS				
MICHIGAN	4' - 1" FROM CURB OR SHOULDER			
NEW YORK	14' PREFERRED FROM EDGE OF TRAVELLED WAY	5' - 8" MIN 15' MAX	15' MAX.	
OHIO				
PENNSYLVANIA				
W. VIRGINIA				

SYMBOLS

BACK-TO-BACK
FLASHING LIGHT SIGNAL 

BACK-TO-BACK
FLASHING LIGHT
SIGNAL AND GATE 

STUB MOUNTED
GATE 

CANTILEVER
MOUNTED FLASHING
LIGHT SIGNALS 

NOTES :

1. Flashing light signals without gates are to be located according to dimensions shown on this plan.
2. Placement of flashers and gates may vary from limits as shown on this plan due to obstructions, utilities, sidewalks, etc.
3. Dimensions not shown to be MUTCD standard.
4. As angle X approaches 90° from position shown, the use of dimension B will result in dimension C becoming less than the distance specified in the table. When this condition occurs, use dimension C to locate mast.
5. Gate arms shall be perpendicular to the centerline of the highway wherever conditions permit.

SHEET 1
CONT'D ON SH. 2 **CONRAIL**  **CS-1000**

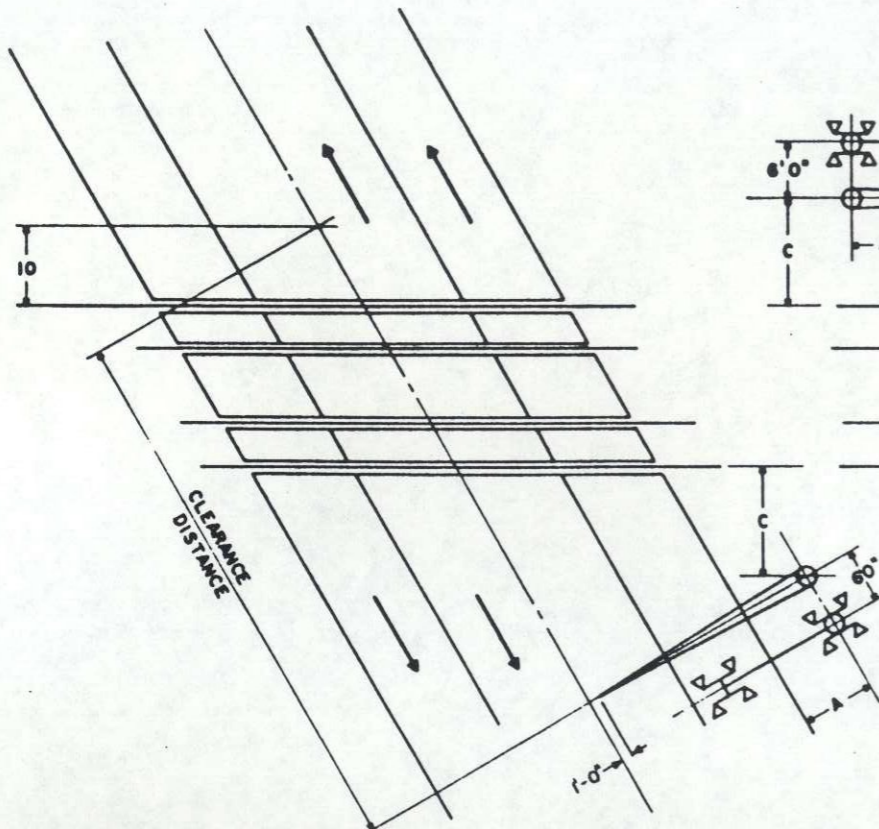
**STANDARD
HIGHWAY CROSSING SIGNALS**

SIGNAL LOCATION PLAN

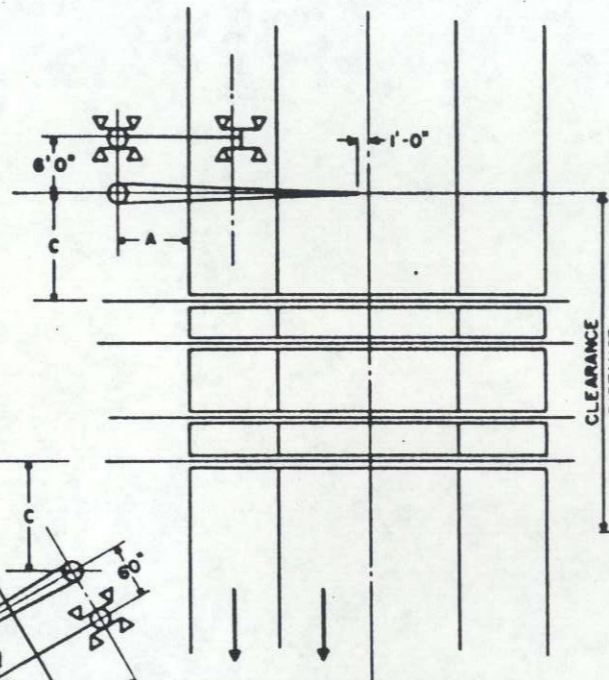
FLASHING LIGHT SIGNALS AND GATES

JUNE 15, 1981

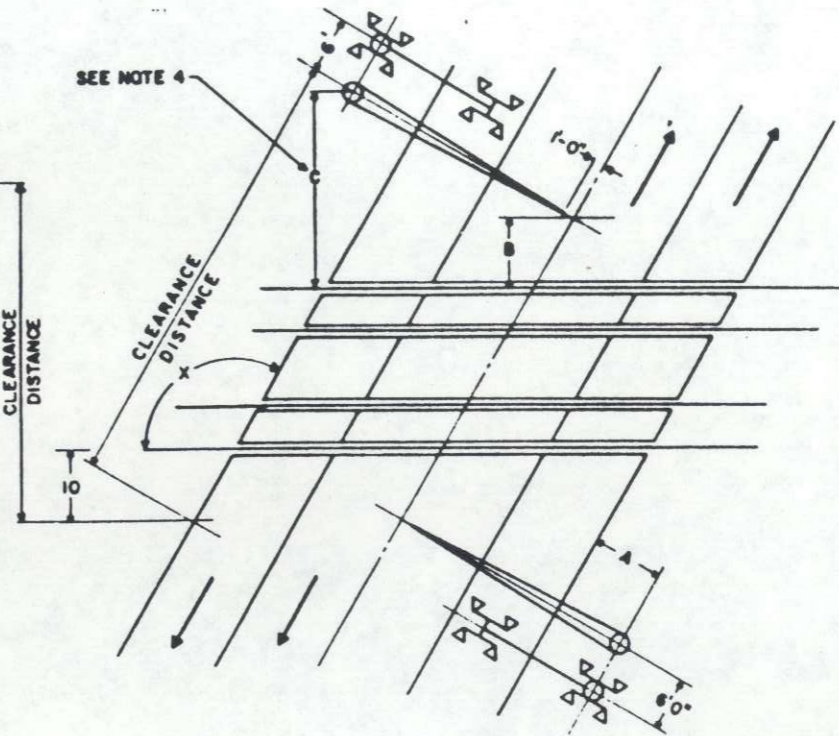
Approved *H. J. [Signature]*
Chief Engineer C & S



ACUTE ANGLE CROSSING



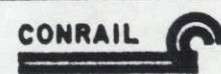
RIGHT ANGLE CROSSING



OBTUSE ANGLE CROSSING

SEE NOTES ON SHEET 1

SHEET 2



CS-1000

STANDARD
 HIGHWAY CROSSING SIGNALS
 SIGNAL LOCATION PLAN
 CANTILEVER FLASHING LIGHT AND GATES
 JUNE 15, 1961