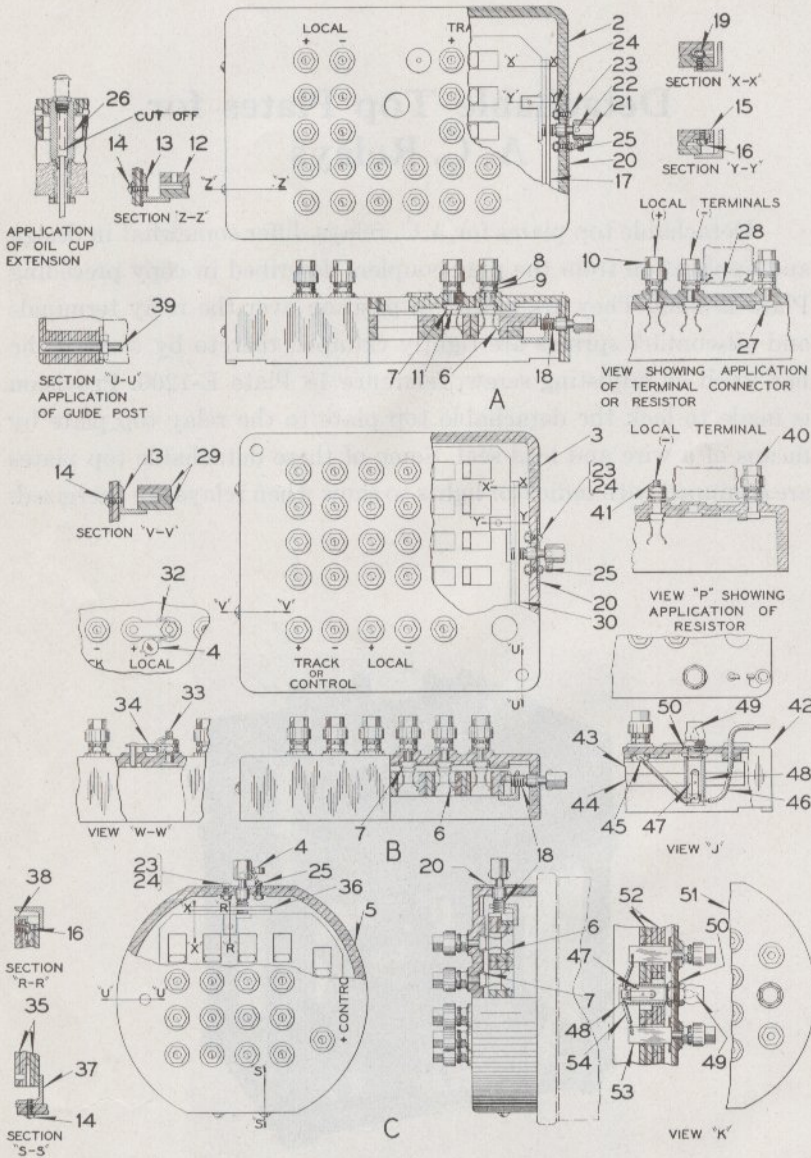


# Zachary C. Gillihan 2008



## Detachable Top Plates for A. C. Relays

(Centrifugal Frequency, Model 15, SV-12, SV-30, SV-20, SV-21, SLV-13, TV-30 and TV-40)

## Detachable Top Plates for A. C. Relays

(Centrifugal Frequency, Model 15, SV-12, SV-30, SV-20,  
SV-21, SLV-13, TV-30 and TV-40)

**Order by Plate, Piece, Reference and Abbreviated  
Description Given in Heavy Face Type Only**

Piece	Ref.	Description	Drawing Reference
108863	A	<b>Detachable Top Plate Complete</b> , with Oil Cup extension Ref. 26 for A.C. Centrifugal Frequency Relay	C-9473-5
108889	Aa	<b>Detachable Top Plate Complete</b> , with Terminal Connector Ref. 28 and oil cup extension Ref. 26 for A.C. Centrifugal Frequency Relay (Will mount Local Resistor).....	C-9473-5
224244	Ab	<b>Detachable Top Plate Complete</b> , with one Guide Post Ref. 39 for "TV-30" and "TV-40" Relays...	C-9473-7
191925	B	<b>Detachable Top Plate Complete</b> , with two guide posts Ref. 39 for Models 15, SV-12 and SV-30 Relays (May be used with Relays having independent contacts or having a bakelite Top Plate).....	C-9473-3
222857	Ba	<b>Detachable Top Plate Complete</b> , with indicator light per View "J" and two guide posts Ref. 39 for Models 15, SV-12 and SV-30 Relays (May be used with Relays having independent contacts or having a bakelite Top Plate).....	C-9473-3
	Bb	<b>Detachable Top Plate Complete</b> , with two guide posts Ref. 39, for Model 15 Track Relay having a Local Resistor per View "P" (May be used with Relays having Bakelite Top Plate only).....	C-9473-3
215239	Bc	<b>Detachable Top Plate Complete</b> , with seal per View "W-W" and two guide posts Ref. 39 for "SV-20" and "SV-21" Relays (May be used with Relays having independent contacts or having a Bakelite Top Plate).....	C-9473-3
222859	Bd	<b>Detachable Top Plate Complete</b> , with indicator light per View "J", seal per View "W-W" and two guide posts Ref. 39 for "SV-20" and "SV-21" Relays (May be used with Relays having independent contacts or having a Bakelite Top Plate).....	C-9473-3
191924	C	<b>Detachable Top Plate Complete</b> , with guide post Ref. 39 for "SLV-13" Relay (May be used with Relays having independent contacts or having a Bakelite Top Plate).....	C-9473-1

Zachary C. Gillihan 2008

# Zachary C. Gillihan 2008

PLATE **E-1200**

UNION SWITCH & SIGNAL CO.

## Detachable Top Plates for A. C. Relays

(Centrifugal Frequency, Model 15, SV-12, SV-30, SV-20, SV-21, SLV-13, TV-30 and TV-40)

(Continued)

Order by Plate, Piece, Reference and Abbreviated Description Given in Heavy Face Type Only

Piece	Ref.	Description	Drawing Reference
222858	Ca	<b>Detachable Top Plate Complete</b> , with indicator light per View "K" and guide post Ref. 39 for "SLV-13" Relay (May be used with Relays having independent contacts or having a Bakelite Top Plate).....	C-9473-1
108862	2	<b>Top Plate Only</b> for Refs. A and Aa.....	C-9472-6
223918	2a	<b>Top Plate Only</b> for Ref. Ab.....	C-9472-7
211882	3	<b>Top Plate Only</b> for Refs. B, Bb and Be.....	C-9472-2
47608	4	<b>Seal</b> .....	8988-12
191344	5	<b>Top Plate Only</b> for Ref. C.....	C-9472-4
191575	6	<b>Contact Spring</b> .....	8885-2422
	7	<b>Terminal Post with Nuts, Washers, Insulated Nut and Nut Lock</b> (Inc. 1-6, 1-7a, 3-8, 2-9, 1-10 and 1-11).....	12451-
109439	7a	<b>Terminal Post Only</b> for Ref. 7.....	8094-2412
29102	8	<b>Washer</b> .....	7828-139
29103	9	<b>Nut</b> .....	8109-194
105713	10	<b>Insulated Nut</b> .....	12770-1
109438	11	<b>Nut Lock</b> .....	8486-310
108861	12	<b>Clamp Plate</b> for Refs. A and Aa.....	C-9472-5
223919	12a	<b>Clamping Plate</b> for Ref. Ab.....	C-9472-8
105819	13	<b>Guide Bracket</b> for Refs. A, Aa, B, Ba, Bb, Bc and Bd	10914-999
224564	13a	<b>Guide Bracket</b> for Ref. Ab.....	10914-1231
	14	<b>Machine Screw</b> , No. 10-30x $\frac{1}{2}$ " Rd. Hd. Br. (N.P.) with No. 10 S. Lock Washer (N.P.).	
191695	15	<b>Reinforcing Bracket</b> for Refs. A, Aa, B, Ba, Bb, Bc and Bd.....	10914-653
224562	15a	<b>Reinforcing Bracket</b> for Ref. Ab.....	10914-1229

# Zachary C. Gillihan 2008

UNION SWITCH & SIGNAL CO.

PLATE **E-1200**

## Detachable Top Plates for A. C. Relays (Centrifugal Frequency, Model 15, SV-12, SV-30, SV-20, SV-21, SLV-13, TV-30 and TV-40)

(Continued)

Order by Plate, Piece, Reference and Abbreviated  
Description Given in Heavy Face Type Only

Piece	Ref.	Description	Drawing Reference
	16	Machine Screw, No. 10-30x $\frac{5}{16}$ " Fil. Hd. Br. (N.P.) with No. 10 S. Lock Washer (N.P.).	
215727	17	Guide Bracket for Refs. A and Aa.....	10914-655
224563	17a	Guide Bracket for Ref. Ab.....	10914-1230
	18	Adjusting Screw with Knob and Rivet (Inc. 1-18a, 1-20, 1-21 and 1-22) for all references except Ab	12471-
191736	18a	Adjusting Screw Only for Ref. 18.....	8190-390
	18b	Adjusting Screw with Knob and Rivet (Inc. 1-18c, 1-20, 1-21 and 1-22) for Ref. Ab.....	12471-
224567	18c	Adjusting Screw Only for Ref. 18b.....	8190-390
	19	Machine Screw, No. 10-30x $\frac{1}{2}$ " Fil. Hd. Br. (N.P.) with No. 10 S. Lock Washer (N.P.).	
191749	20	Name Plate.....	8225-471
191739	21	Knob.....	8235-169
54921	22	Rivet.....	10301-1
	23	Machine Screw, No. 8-36x $\frac{1}{2}$ " Rd. Hd. Br. (N.P.) with No. 8 S. Lock Washer (N.P.) and Nut Ref. 24.	
32498	24	Nut.....	8109-223
	25	Screw with No. 8 Lock Washer (N.P.) and Nut Ref. 24.....	12471-
52888	25a	Screw Only.....	8098-670
108888	26	Oil Cup Extension for Refs. A and Aa.....	8350-948
	27	Terminal Post with Nuts and Washers (Inc. 1-27a, 3-8, 3-9 and 1-10).....	12451-
186848	27a	Terminal Post Only.....	8094-2207
141963	28	Terminal Connector.....	8064-305

# Zachary C. Gillihan 2008

PLATE **E-1200**

UNION SWITCH & SIGNAL CO.

## Detachable Top Plates for A. C. Relays

(Centrifugal Frequency, Model 15, SV-12, SV-30, SV-20,  
SV-21, SLV-13, TV-30 and TV-40)

(Continued)

Order by Plate, Piece, Reference and Abbreviated  
Description Given in Heavy Face Type Only

Piece	Ref.	Description	Drawing Reference
191295	29	Clamp Plate for Refs. B, Bb and Bc.....	C-9472-1
191733	30	Guide Bracket for Refs. B, Ba, Bb, Bc and Bd.....	10914-655
142777	31	Tag (Not shown) (Orders should specify marking desired).....	8988-75
	32	Seal Wire (Cad. Pl.) (Orders should specify length desired).	
	33	Terminal Post with Nuts and Washers (Inc. 1-33a, 1-8 and 2-9).....	12451-
108085	33a	Terminal Post Only.....	8094-2403
108087	34	Sealing Plate Complete for Refs. Bc and Bd.....	12538-223
191327	35	Clamp Plate for Ref. C.....	C-9472-3
191731	36	Guide Bracket for Refs. C and Ca.....	10914-654
105714	37	Guide Bracket for Refs. C and Ca.....	10914-958
191701	38	Reinforcing Bracket for Refs. C and Ca.....	10914-653
191757	39	Guide Post for Refs. B, Ba, Bb, Bc, Bd, C and Ca..	8114-873
	40	Terminal Post with Nuts, Ins. Nut and Washers (Inc. 1-7a, 4-8, 2-9 and 1-10).....	12451-
	41	Terminal Post with Nuts, Washers, Nut Lock and Spring (Inc. 1-41a, 1-6, 2-8, 2-9 and 1-11).....	12451-
109488	41a	Terminal Post Only for Ref. 41.....	8094-2412
224792	42	Top Plate Only for Refs. Ba and Bd (with holes for indicator light).....	C-9472-2
224874	43	Clamp Plate for Refs. Ba and Bd.....	C-9472-1
224875	44	Clamp Plate for Refs. Ba and Bd.....	C-9472-1
224790	45	Terminal for Refs. Ba and Bd.....	8244-43
224788	46	Lead Complete for Refs. Ba and Bd.....	B-9991-19
224784	47	Lamp Socket Complete for Refs. Ba, Bd and Ca....	12522-31

# Zachary C. Gillihan 2008

UNION SWITCH & SIGNAL CO.

PLATE **E-1200**

## Detachable Top Plates for A. C. Relays (Centrifugal Frequency, Model 15, SV-12, SV-30, SV-20, SV-21, SLV-13, TV-30 and TV-40)

(Continued)

Order by Plate, Piece, Reference and Abbreviated  
Description Given in Heavy Face Type Only

Piece	Ref.	Description	Drawing Reference
224787	48	Insulating Tube for Refs. Ba, Bd and Ca.....	8095-753
	49	Lamp (C.N. 71543) for Refs. Ba, Bd and Ca.	
224785	50	Washer.....	7828-287
224877	51	Top Plate Only, for Ref. Ca (with hole for indicator light).....	C-9472-4
224876	52	Clamp Plate for Ref. Ca.....	C-9472-3
224786	53	Terminal for Ref. Ca.....	8244-170
185764	54	Lead for Ref. Ca.....	B-9998-16