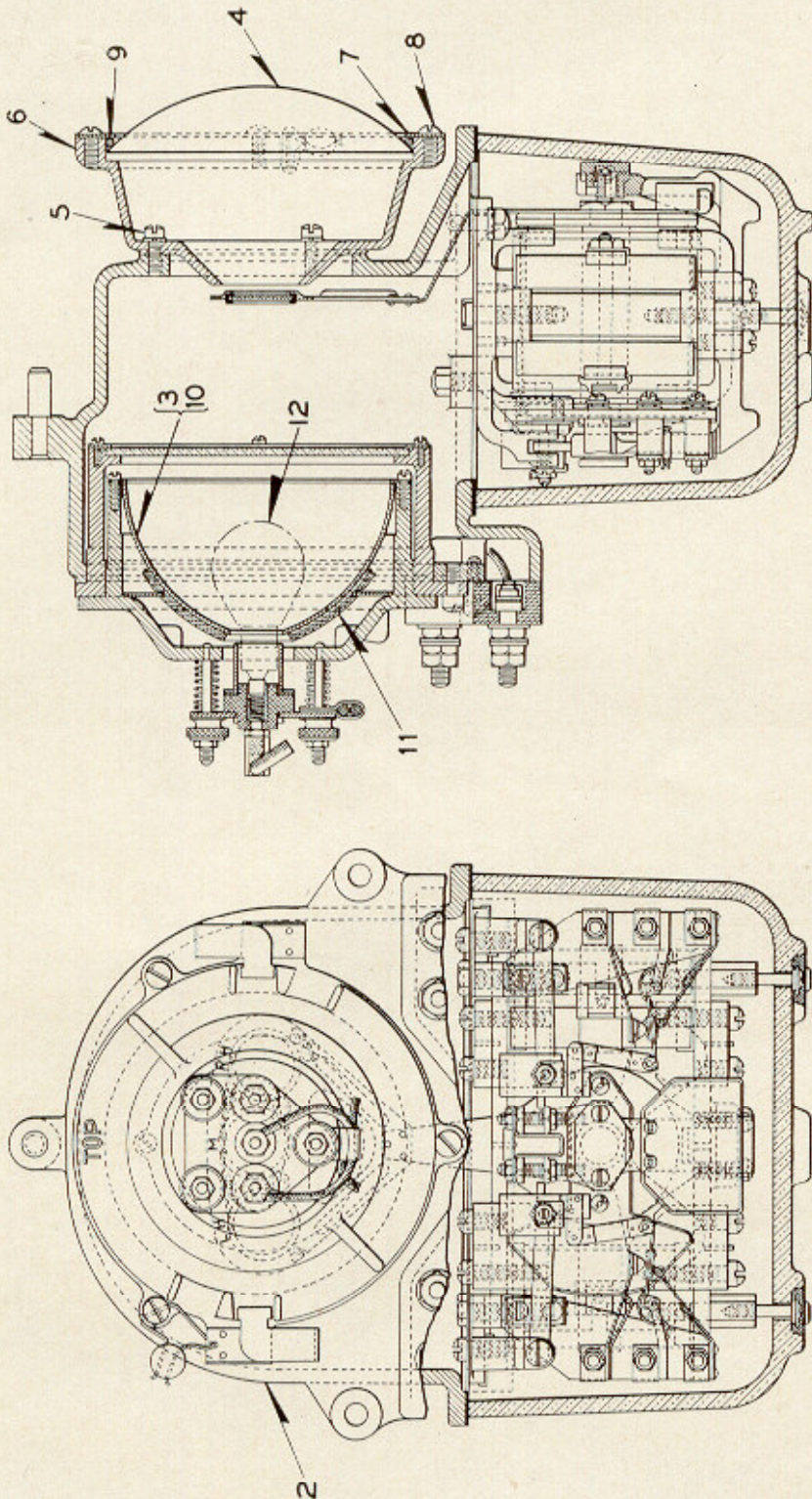


UNION SWITCH & SIGNAL CO.

ZCG UTILITY SCRAP  
UNION MO 63084



A

FOR OTHER DETAILS  
REFER TO PLATE B-2885

STYLE "H-2" D. C. SEARCHLIGHT SIGNAL OPERATING UNIT  
(WITH CONTACTS)

**UNION SWITCH & SIGNAL CO.**

**STYLE "H-2" D. C. SEARCHLIGHT SIGNAL OPERATING UNIT  
(WITH CONTACTS)**

**Order by Plate, Piece, Reference and Abbreviated Description Given in  
Heavy Face Type Only**

| D. C. Style "H-2" D. C. Searchlight Signal Operating Unit with Contacts complete (Without Lamp) |      |  |                   |                             |              |                |              |                   |
|---|------|--|-------------------|-----------------------------|--------------|----------------|--------------|-------------------|
| Piece   | Ref. | Armature Coil Res.   | Operating Voltage | Term. Bd. Ref. Plate B-2885 | L.H. Roundel | Middle Roundel | R.H. Roundel | Drawing Reference |
| 169602  | A    | 250-ohms   | 6-8 Volts         | 7                           | Yellow       | Red            | Green        | C-9157-10         |
| 171666  | Aa   | 250-ohms   | 6-8 Volts         | 7                           | Yellow       | Purple         | Green        | C-9157-10         |
| 176998  | Ab   | 250-ohms   | 6-8 Volts         | 7                           | Yellow       | Red            | Red          | C-9157-10         |
| 175982  | Ac   | 250-ohms   | 6-8 Volts         | 8                           | Green        | Red            | Yellow       | C-9157-10         |
| 177596  | Ad   | 500-ohms   | 8-10 Volts        | 7                           | Yellow       | Red            | Green        | C-9157-10         |
| 177597  | Ae   | 500-ohms   | 8-10 Volts        | 7                           | Yellow       | Red            | Red          | C-9157-10         |
| 177598  | Af   | 500-ohms   | 8-10 Volts        | 7                           | Red          | Red            | Green        | C-9157-10         |
| 181006  | Ag   | 250-ohms   | 6-8 Volts         | 7                           | White        | Red            | Green        | C-9157-10         |
| 181050  | Ah   | 250-ohms   | 6-8 Volts         | 7                           | Yellow       | Red            | Yellow       | C-9157-10         |
| 181079  | Aj   | 250-ohms   | 6-8 Volts         | 8                           | Red          | Red            | Yellow       | C-9157-10         |
| 182268  | Ak   | 250-ohms   | 6-8 Volts         | 7                           | Yellow       | Purple         | Purple       | C-9157-10         |
| Piece   | Ref. | Description  |                   |                             |              |                |              | Drawing Reference |
| 169547  | 2    | Upper Case .....   |                   |                             |              |                |              | C-9158-4          |
| 171634  | 3    | Reflector Complete with Lamp Socket and Retaining Ring .....                                       |                   |                             |              |                |              | C-9158-5          |
|   | 3a   | Reflector Complete with Lamp Socket and Retaining Ring (Jam Nuts tightened but not soldered) ..... |                   |                             |              |                |              | C-9158-5          |

**ZCG UTILITY SCRAP  
UNION MO 63084**

PLATE B-2888

**UNION SWITCH & SIGNAL CO.**

**STYLE "H-2" D. C. SEARCHLIGHT SIGNAL OPERATING UNIT  
(WITH CONTACTS)  
(Continued)**

**Order by Plate, Piece, Reference and Abbreviated Description Given in  
Heavy Face Type Only**

| Piece  | Ref. | Description   | Drawing Reference |
|--------|------|---|-------------------|
| 169298 | 4    | Lens.....   | B-8276-62         |
|        | 5    | Machine Screw, No. 10-30x $\frac{1}{2}$ " Fil. Hd. S. (Cad. Pl.) with $\frac{3}{16}$ " Plain S. Lock Washer ( $\frac{1}{16}$ "x $\frac{1}{16}$ " Cad. Pl. |                   |
| 167997 | 6    | Adapter.....  | C-9105-16         |
| 169544 | 7    | Lens Ring.....  | 7436-141          |
|        | 8    | Machine Screw, No. 10-30x $\frac{1}{4}$ " Rd. Hd. S. (Cad. Pl).   |                   |
|        | 9    | Cork Gasket, $\frac{5}{32}$ " diam. x 14" Long.   |                   |
| 169708 | 10   | Reflector only.....   | B-12652-7         |
| 169703 | 11   | Gasket.....   | 8078-1042         |
|        | 12   | Lamp (When ordering refer to Plate B-2885).....<br>For other details refer to Plate B-2885.   | B-12409-          |