

SECTION 34-A-19

STYLE "L" SIGNAL
MECHANISMS



HALL SWITCH AND SIGNAL CO.

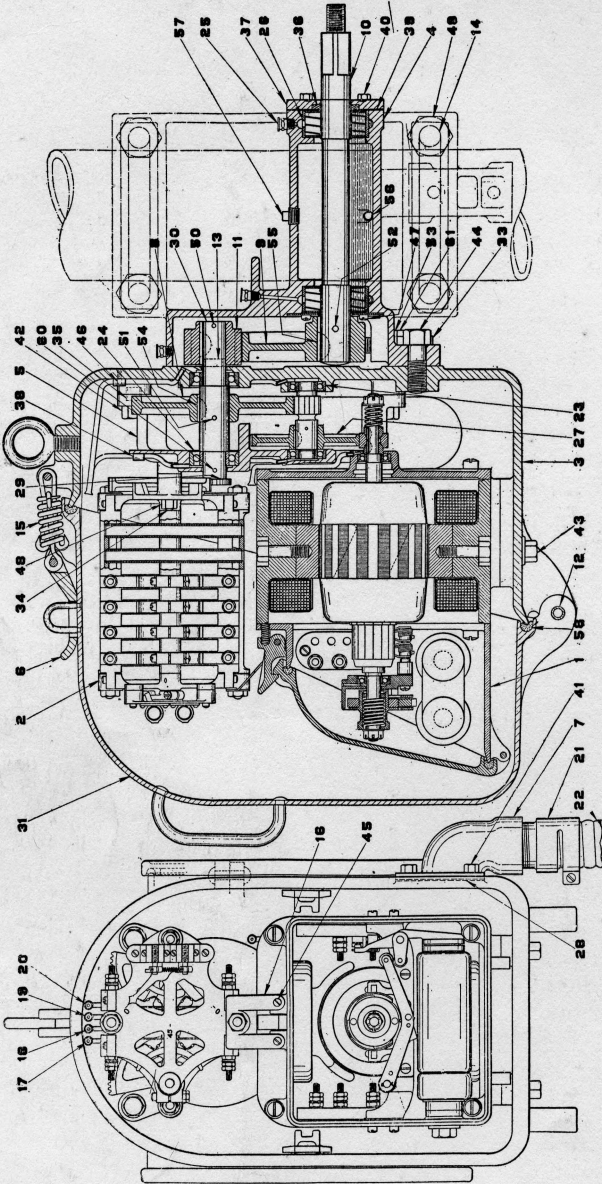
Garwood, N. J.

Supplementing Bulletin 34-17 Description of Style "L" Signal, we are presenting in this Catalogue Section, line drawings and part numbers of mechanism and other detail parts for convenience of reference.

34.

D. C. Signal
Mechanism

Hall Switch & Signal Company



Signal Mechanism

34.00 Style L

Approximate Shipping Weight 400 lbs.

Hall Switch & Signal Company

SIGNAL MECHANISM 34.00

Style "L" D. C. Top Post Mechanism and Case Complete for 2 or 3 Position
Upper R. H. Quadrant.

Specify as required:

4", 5" or 6" Pipe.

Voltage.

Extra Circuit Controller Contacts.

Pole Changer.

Resistance of Hold Clear Magnet.

Spectacle.

List of Parts

Fig. No.	NAME	Order No.
	Order by Order No. and Name	
1	Motor complete.....	34.01
2	{Circuit Controller complete.....	34.02
	{Circuit Controller complete, with Pole Changer.....	34.239
3	Case	34.03
4	Clamp Bearing.....	34.04
5	Gear Frame.....	34.71
6	Hasp	34.73
7	Conduit Support.....	34.74
8	Gear	34.77
9	Gear Segment.....	34.78
10	{Blade Shaft	34.79
	{Blade Shaft, for Clamp Spectacle.....	34.80
11	Pinion	34.81
12	Hinge Pin.....	34.86
13	Dowel Bushing.....	34.87
14	U Bolt	34.90
15	Spring	34.91
16	Support	34.121
17	Oil Tube	34.128
18	Oil Tube	34.129
19	Oil Tube	34.130
20	Oil Tube	34.131
21	Conduit Fitting.....	34.133
22	Conduit	34.134
23	Ball Bearing.....	34.135
24	Ball Bearing.....	34.136

Hall Switch & Signal Company

SIGNAL MECHANISM 34.00

List of Parts

Fig. No.	NAME	Order No.
25	Oiler	34.137
26	Roller Bearing.....	34.138
27	{ Gear and Pinion complete.....	34.144
	{ Gear and Blade Latch complete.....	34.75
28	Gasket	34.148
29	Pinion	34.328
30	Shaft	34.329
31	Cover	34.331
32	Resistance Unit.....	34.496
33	Stop Screw.....	3.821
34	Stud	4.300
35	Dowel Bushing.....	33.38
36	Gasket	33.81
37	Weather Plate.....	33.87
38	Clamp for Oil Tube.....	43.185
39	Retaining Ring.....	45.1529
40	$\frac{1}{4}$ " x $\frac{7}{8}$ " hex. hd. Cap Screw.....	
41	$\frac{3}{8}$ " x $\frac{3}{4}$ " hex. hd. Cap Screw.....	
42	$\frac{1}{2}$ " x $1\frac{1}{2}$ " hex. hd. Cap Screw.....	
43	$\frac{1}{2}$ " x $1\frac{3}{4}$ " hex. hd. Cap Screw.....	
44	$\frac{3}{4}$ " x $1\frac{7}{8}$ " hex. hd. Cap Screw.....	
45	No. 10—32 x $\frac{1}{8}$ " round hd. Brass Machine Screw.....	
46	No. 10—32 x $\frac{1}{2}$ " flat hd. Iron Machine Screw.....	
47	No. 14—24 x $\frac{1}{2}$ " fil. hd. Iron Machine Screw.....	
48	$\frac{7}{16}$ "—14 hex. Iron Nut.....	
49	$\frac{3}{4}$ "—10 hex. Iron Nut.....	
50	$\frac{3}{16}$ " x $1\frac{3}{4}$ " Cotter Pin.....	
51	$\frac{3}{16}$ " x $2\frac{1}{4}$ " Cotter Pin.....	
52	$\frac{1}{4}$ " x 3" Cotter Pin.....	
53	$\frac{5}{8}$ " Lock Washer.....	
54	No. 14 Woodruff Key.....	
55	No. D Woodruff Key.....	
56	$\frac{1}{8}$ " Pipe Plug.....	
57	$\frac{3}{8}$ " Pipe Plug.....	
58	$\frac{1}{2}$ " dia. Braided Torch Wicking, 52" long.....	
59	$\frac{3}{8}$ " dia. Braided Torch Wicking, 32" long.....	
60	No. 1 x $1\frac{1}{8}$ " Split Taper Pin.....	
61	$\frac{5}{8}$ " hex. Jam Nut.....	

Hall Switch & Signal Company

SIGNAL MECHANISM 34.573

**Style "L" D. C. Top Post Mechanism and Case Complete for 2 or 3 Position
Upper L. H. Quadrant.**

Specify as required:

4", 5" or 6" Pipe.

Voltage

Extra Circuit Controller Contacts.

Pole Changer.

Resistance of Hold Clear Magnet.

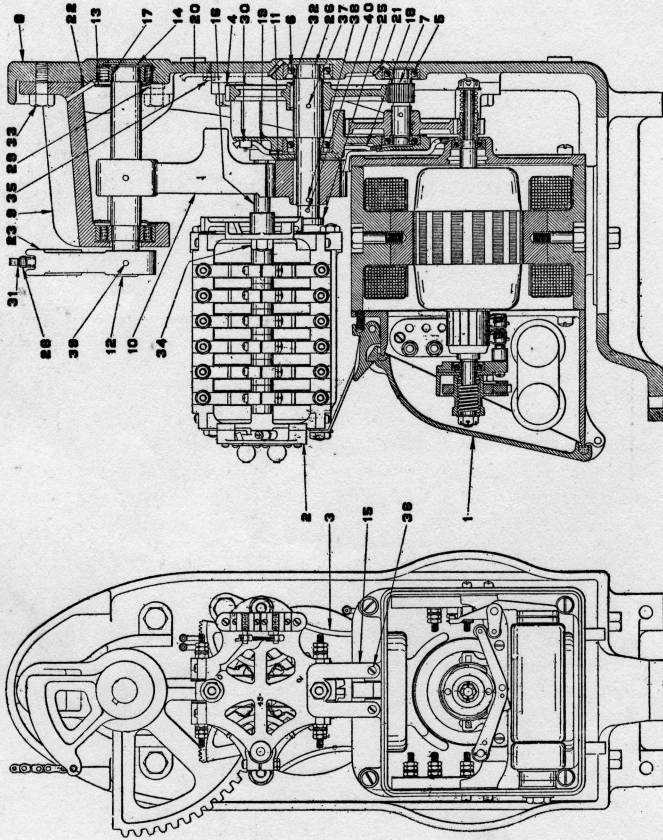
Spectacle.

**NOTE—This Mechanism is fitted similar to Mechanism 34.00, except using Motor 34.201
instead of 34.01, and Clamp Bearing 34.199 instead of 34.04.**

34.

D. C. Signal
Mechanism

Hall Switch & Signal Company



Signal Mechanism

34.300 Style L

Approximate Shipping Weight: 300 lbs.

Hall Switch & Signal Company

SIGNAL MECHANISM 34.300

Style "L" D. C. Bottom Post Mechanism Complete for 2 or 3 Position
Upper R. H. Quadrant.

Specify as required:

Voltage.

Extra Circuit Controller Contacts.

Pole Changer.

Resistance of Hold Clear Magnet.

List of Parts

Fig. No.	NAME	Order No.
	Order by Order No. and Name	
1	Motor complete.....	34.201
2	{Circuit Controller complete	34.02
	{Circuit Controller complete, with Pole Changer.....	34.239
3	Gear Frame	34.71
4	Gear	34.77
5	Ball Bearing complete.....	34.135
6	Ball Bearing complete.....	34.136
7	{Gear and Pinion complete.....	34.144
	{Gear and Blade Latch complete.....	34.75
8	Frame	34.301
9	Bearing Bracket.....	34.303
10	Gear Segment.....	34.304
11	Pinion	34.305
12	Shaft	34.308
13	Washer	34.309
14	Washer	34.310
15	Support	34.311
16	Stud	34.312
17	Roller Bearing complete.....	34.315
18	Oil Tube	34.316
19	Oil Tube	34.317
20	Oil Tube	34.318
21	Oil Tube	34.319
22	Oil Tube	34.320
23	Sector	34.322

34.

D. C. Signal
Mechanism

Hall Switch & Signal Company

SIGNAL MECHANISM 34.300

List of Parts

Fig. No.	NAME	Order No.
24	Sub-base	34.324
25	Pinion	34.328
26	Shaft	34.330
27	Resistance Unit.....	34.496
28	Pin	4.396
29	Dowel Bushing.....	33.38
30	Clamp for Oil Tube.....	43.185
31	Chain	45.2092
32	No. 14 Woodruff Key.....	
33	$\frac{1}{2}$ "—13x $\frac{1}{4}$ " hex. hd. Cap Screw.....	
34	$\frac{7}{16}$ " hex. Iron Nut.....	
35	No. 10—32 x $\frac{1}{2}$ " flat hd. Iron Machine Screw.....	
36	No. 10—32 x $\frac{5}{16}$ " round hd. Brass Machine Screw.....	
37	$\frac{5}{16}$ " x $2\frac{1}{4}$ " Cotter Pin.....	
38	$\frac{5}{16}$ " x $1\frac{3}{4}$ " Cotter Pin.....	
39	$\frac{1}{4}$ " x $2\frac{3}{4}$ " Cotter Pin.....	
40	No. 1 x $1\frac{1}{8}$ " Split End Taper Pin.....	

Hall Switch & Signal Company

SIGNAL MECHANISM 34.350

**Style "L" D. C. Double Bottom Post Mechanism Complete for 2 or 3 Position
Upper R. H. Quadrant.**

Specify as required:

Voltage.

Extra Circuit Controller Contacts.

Pole Changer.

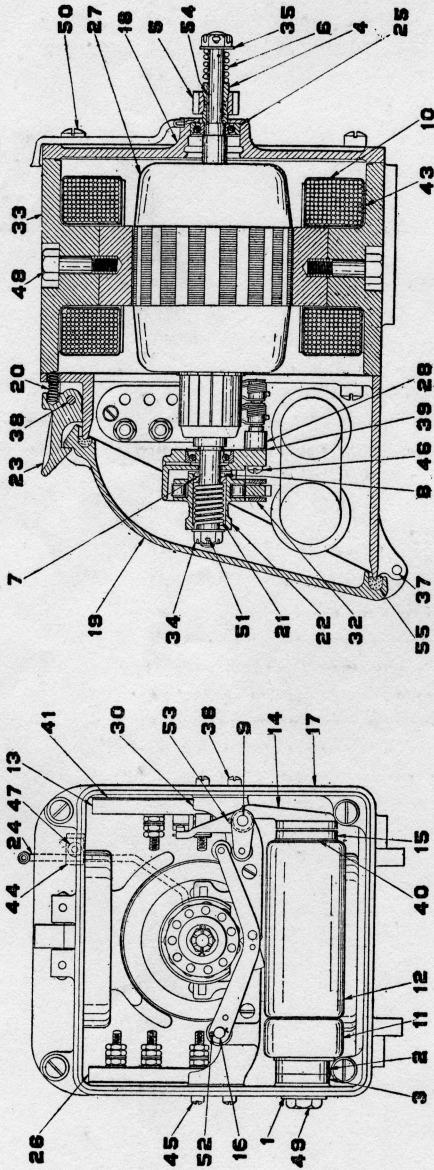
Resistance of Hold Clear Magnet.

NOTE— This Mechanism consists of one single Mechanism 34.300 and one single Mechanism fitted similar to 34.300, except using Motor 34.01, Shaft 34.351 and Sub-base 34.321.

34.

D. C.
Motors

Hall Switch & Signal Company



D. C. MOTOR
Approximate Shipping Weight, 101 Lbs.

Hall Switch & Signal Company

D. C. MOTORS

No. 34.01, Clockwise Rotation
 No. 34.201, Counter-clockwise Rotation
 List of Parts

Fig. No.	NAME	Order No.
	Order by Order No. and Name	
1	Washer	34.19
2	Magnet Yoke.....	34.21
3	Bushing	34.34
4	Cone	34.36
5	Pinion	34.37
6	Clutch Spring.....	34.38
7	Collar for Spring Stop.....	34.39
8	Pin for Collar.....	34.40
9	Pin	34.44
10	Field Coil.....	34.50
11	Magnet Coil complete.....	34.52
12	Magnet Coil complete.....	34.53
13	Contact Block complete.....	34.54
14	Armature complete.....	34.56
15	Magnet Core complete.....	34.57
16	Pin	34.64
17	Motor Head, front.....	34.67
18	Motor Bearing, rear end.....	34.68
19	Door.....	34.70
20	Latch Spring.....	34.108
21	Roller Carrier Spring.....	34.112
22	Roller Carrier complete.....	34.117
23	Latch	34.118
24	Oil Tube.....	34.132
25	Ball Bearing (Norma Cat. No. E15).....	34.139
26	Terminal Block complete.....	34.140
27	Motor Armature complete.....	34.141
28	R. H. Brush Holder Support complete.....	34.142
29	L. H. Brush Holder Support complete.....	34.143
30	Motor Bearing, front.....	34.150
31	Thrust Washer.....	34.190
32	{ Holding Arm complete (for 34.01).....	34.207
	{ Holding Arm complete (for 34.201).....	34.212
33	Motor Frame complete.....	34.215
34	Nut	3.641

Hall Switch & Signal Company

D. C. MOTORS

No. 34.01, Clockwise Rotation

No. 34.201, Counter-clockwise Rotation

List of Parts

Fig. No.	NAME	Order No.
35	Washer	3.822
36	Special Screw.....	3.829
37	Hinge Pin.....	4.344
38	Latch Pin.....	4.345
39	Insulating Plate.....	8.602
40	Insulation for Coil Ends.....	8.603
41	Insulating Plate.....	8.604
42	Plug	8.704
43	Washer	8.711
44	Clamp for Oil Tube.....	43.185
45	No. 14—24 x 5/8" fl. hd. Iron Machine Screw.....	
46	No. 14—24 x 7/8" fl. hd. Iron Machine Screw.....	
47	No. 10—32 x 1/2" flat hd. Iron Machine Screw.....	
48	1/2"—13 x 1 1/2" hex. hd. Cap Screw.....	
49	1/2"—13 hex. Jam Nut.....	
50	3/8"—16 x 7/8" fl. hd. Cap Screw.....	
51	1/8" x 7/8" Cotter Pin.....	
52	1/8" x 3/8" Cotter Pin.....	
53	1/8" x 1 1/8" Cotter Pin.....	
54	No. 2 Woodruff Key.....	
55	3/8" x 36" Braided Torch Wicking.....	

Hall Switch & Signal Company

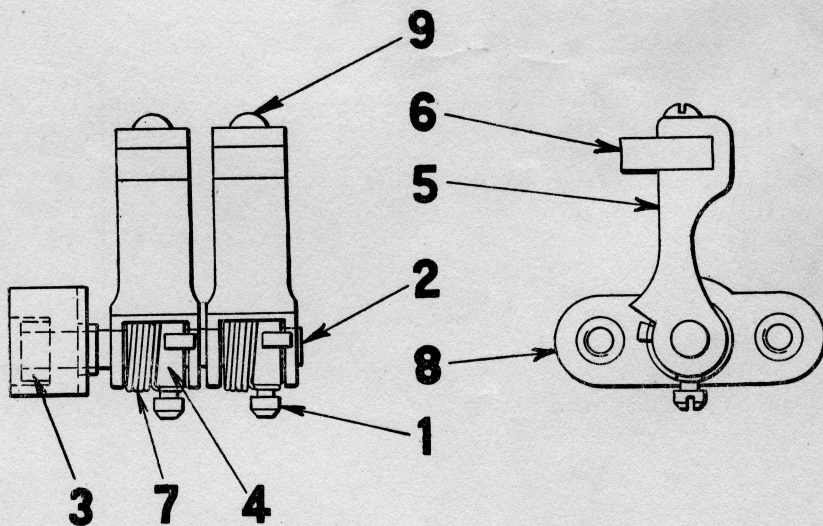
MOTOR BRUSHES

No. 34.142 Right Hand Brush Holder Complete

No. 34.143 Left Hand Brush Holder Complete

List of Parts

Fig. No.	NAME	Order No.
	Order by Order No. and Name	
1	Screw	34.13
2	Brush Holder Stud.....	34.16
3	Nut	34.18
4	Hub	34.22
5	Brush Holder	34.23
6	Motor Brush.....	34.28
7	Spring	34.30
8	Insulation	8.596
9	No. 6-32 x 1/2" round hd. Brass Machine Screw.....	



BRUSH HOLDER COMPLETE

Approximate Shipping Weight: 2 oz.

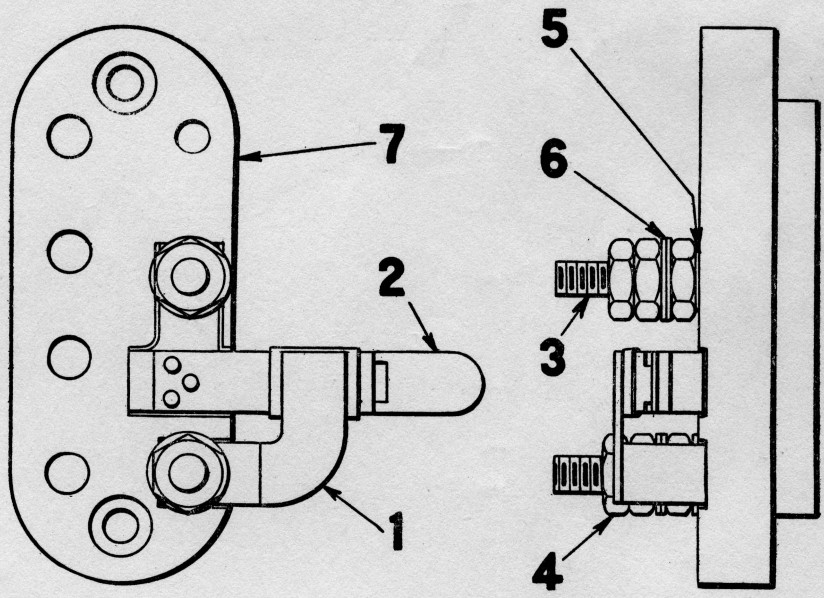
Hall Switch & Signal Company

CONTACT BLOCK

No. 34.54

List of Parts

Fig. No.	NAME	Order No.
Order by Order No. and Name		
1	Contact Stirrup.....	34.51
2	Contact Finger complete.....	34.116
3	Binding Post Screw.....	3.264
4	Nut	3.534
5	Washer	3.709
6	Washer	3.713
7	Supporting Block.....	8.600



CONTACT BLOCK NO. 34.54

Approximate Shipping Weight: 8 oz.

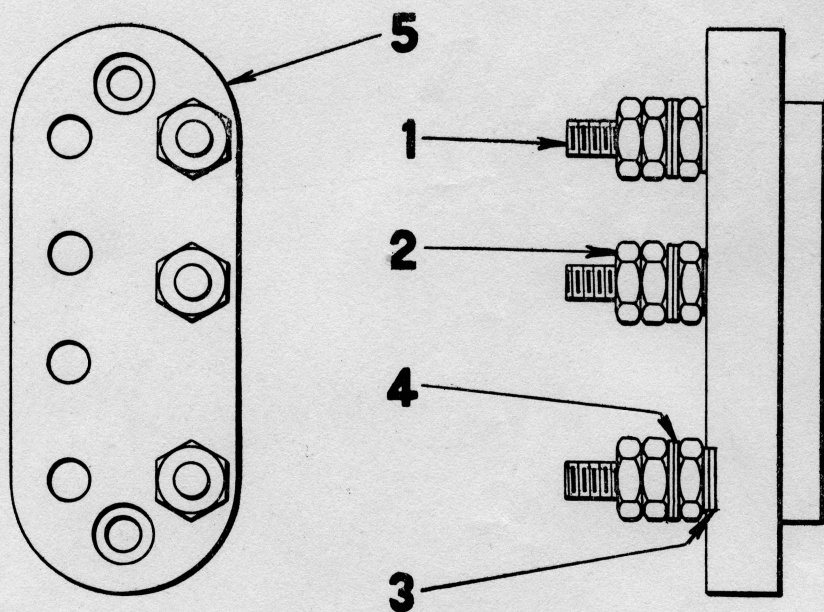
Hall Switch & Signal Company

TERMINAL BLOCK

No. 34.140

List of Parts

Fig. No.	NAME	Order No.
	Order by Order No. and Name	
1	Binding Post Screw.....	3.264
2	Special Nuts	3.534
3	Special Washers	3.709
4	Special Washers	3.713
5	Supporting Block.....	8.600



TERMINAL BLOCK NO. 34.140

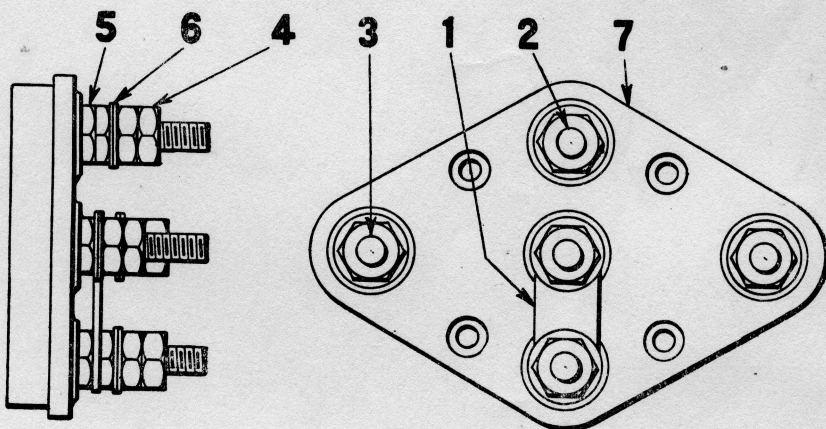
Approximate Shipping Weight: 6 oz.

Hall Switch & Signal Company

TERMINAL BLOCK

No. 34.243
List of Parts

Fig. No.	NAME	Order No.
	Order by Order No. and Name	
1	Connecting Strap.....	34.242
2	Binding Post Screw.....	3.222
3	Binding Post Screw.....	3.264
4	Nut	3.534
5	Nut	3.621
6	Washer	3.713
7	Terminal Block.....	8.648

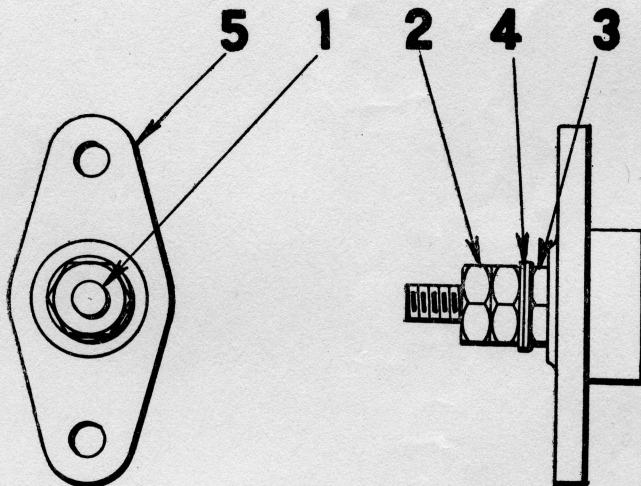
TERMINAL BLOCK NO. 34.243
Approximate Shipping Weight: 1 lb.

Hall Switch & Signal Company

TERMINAL BLOCK

No. 34.244
List of Parts

Fig. No.	NAME	Order No.
Order by Order No. and Name		
1	Binding Post Screw.....	3.264
2	Nut	3.534
3	Nut	3.621
4	Washer	3.713
5	Terminal Block.....	8.671

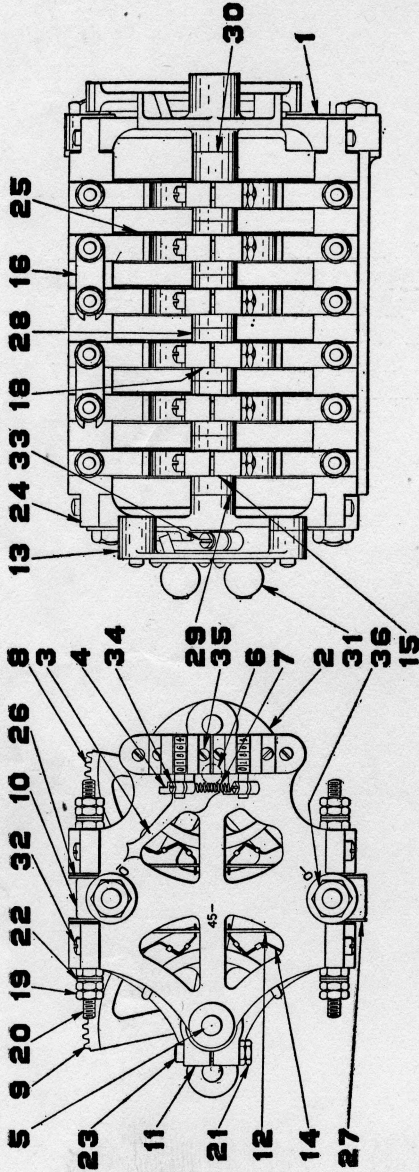


TERMINAL BLOCK NO. 34.244
Approximate Shipping Weight: 4 oz.

34.

Circuit
Controllers

Hall Switch & Signal Company



CIRCUIT CONTROLLER
Approximate Shipping Weight, 14 Lbs.

Hall Switch & Signal Company

CIRCUIT CONTROLLERS

No. 34.02, Plain Circuit Controller
No. 34.239, Pole Changer Circuit Controller

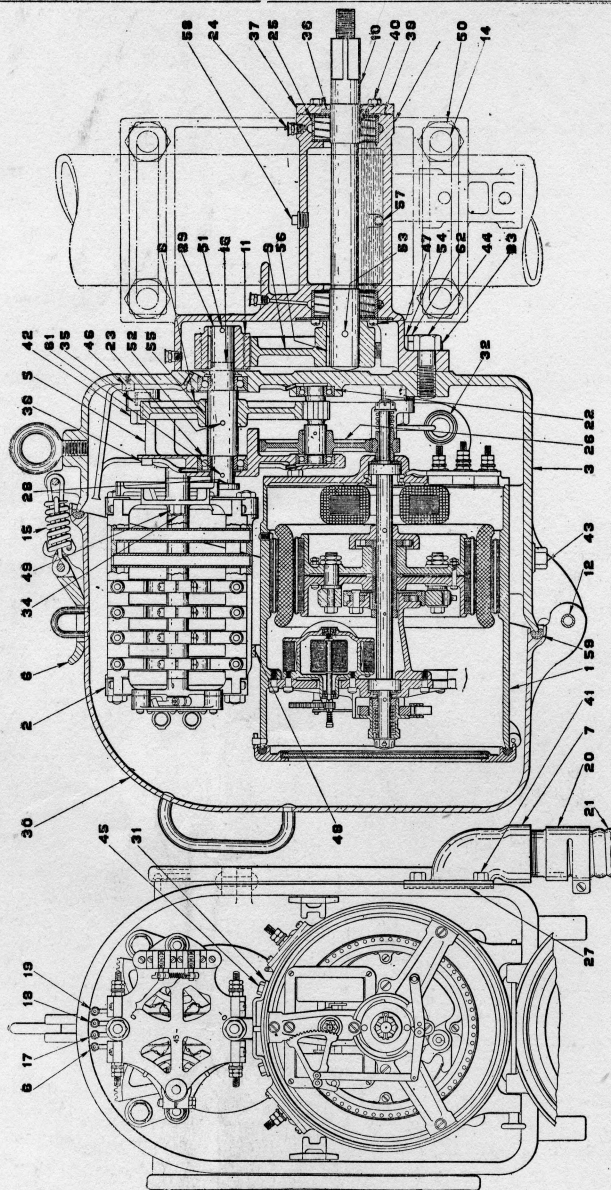
List of Parts

Fig. No.	NAME	Order No.
Order by Order No. and Name		
1	Circuit Controller Frame, rear	34.06
2	Circuit Controller Frame, front	34.07
3	Indicator Arm	34.08
4	Operating Arm	34.10
5	Controller Shaft	34.95
6	Controller Shaft	34.96
7	Counter Spring	34.98
8	Gear Segment	34.99
9	Gear Segment	34.100
10	Frame Support	34.101
11	Contact Segment	34.102
12	Stop	34.105
13	Counter Base	34.106
14	Contact Spring complete	34.107
15	Snub Contact Segment	34.110
16	Universal Connecting Link	34.193
17	Bracket (for use in place of one counter)	34.197
18	Contact Segment, for Pole Changer Control	34.447
19	Hex Nut	3.534
20	Binding Post Screw	3.563
21	Hex Nut	3.621
22	Washer	3.713
23	Adjusting Screw	3.820
24	Contact Spring Support	8.605
25	Wire Tube	8.610
26	Frame Support Insulation (top)	8.611
27	Frame Support Insulation (bottom)	8.612
28	{ Insulated Adjusting Collar complete (center)	8.625
	{ Spacer (for use in place of 8.625)	8.664
29	{ Insulated Adjusting Collar complete (front)	8.626
	{ Spacer (for use in place of 8.626)	8.665
30	{ Insulated Adjusting Collar complete (back)	8.627
	{ Spacer (for use in place of 8.627)	8.663
31	Veeder Counter (No. 6 with large Shaft and Pawl)	33.89
32	No. 10—32 x 5/8" fl. hd. Iron Machine Screw	

34.

A. C. Signal
Mechanism

Hall Switch & Signal Company



Signal Mechanism

34.400 Style L

Approximate Shipping Weight: 400 lbs.

Hall Switch & Signal Company

SIGNAL MECHANISM 34.400

Style "L" A. C. Top Post Mechanism and Case Complete for 2 or 3 Position
Upper R. H. Quadrant.

Specify as required:

4", 5" or 6" Pipe.

Voltage and Cycle.

Extra Circuit Controller Contacts.

Pole Changer.

Resistance of Hold Clear Magnet.

Spectacle.

List of Parts

Fig. No.	NAME	Order No.
	Order by Order No. and Name	
1	Motor complete (specify Cycle and Voltage).....	34.430
2	{Circuit Controller complete.....	34.02
	{Circuit Controller complete, with Pole Changer.....	34.239
3	Case	34.03
4	Clamp Bearing.....	34.04
5	Gear Frame.....	34.71
6	Hasp	34.73
7	Conduit Support.....	34.74
8	Gear	34.77
9	Gear Segment.....	34.78
10	{Blade Shaft	34.79
	{Blade Shaft, for Clamp Spectacle.....	34.80
11	Pinion	34.81
12	Hinge Pin.....	34.86
13	Dowel Bushing	34.87
14	U Bolt.....	34.90
15	Spring	34.91
16	Oil Tube	34.128
17	Oil Tube	34.129
18	Oil Tube	34.130
19	Oil Tube	34.131
20	Conduit Fitting.....	34.133
21	Conduit	34.134
22	Ball Bearing.....	34.135
23	Ball Bearing.....	34.136
24	Oiler	34.137
25	Roller Bearing.....	34.138
26	{Gear and Pinion complete	34.144
	{Gear and Blade Latch complete.....	34.75

Hall Switch & Signal Company

SIGNAL MECHANISM 34.400

List of Parts

Fig. No.	NAME	Order No.
27	Gasket	34.148
28	Pinion	34.328
29	Shaft	34.329
30	Cover	34.331
31	Support	34.439
32	Resistance Unit (specify Cycle and Voltage).....	
33	Stop Screw.....	3.821
34	Stud	4.300
35	Dowel Bushing.....	33.38
36	Gasket	33.81
37	Weather Plate.....	33.87
38	Clamp for Oil Tube.....	43.185
39	Retaining Ring.....	45.1529
40	1/4" x 7/8" hex. hd. Cap Screw.....	
41	3/8" x 3/4" hex. hd. Cap Screw.....	
42	1/2" x 1 1/2" hex. hd. Cap Screw.....	
43	1/2" x 1 3/4" hex. hd. Cap Screw.....	
44	3/4" x 1 7/8" hex. hd. Cap Screw.....	
45	No. 14—24 x 1/2" hex. hd. Cap Screw.....	
46	No. 10—32 x 1/2" flat hd. Iron Machine Screw.....	
47	No. 14—24 x 1/2" fl. hd. Iron Machine Screw.....	
48	No. 14—24 x 3/8" flat hd. Iron Machine Screw.....	
49	7/16"—14 hex. Iron Nut.....	
50	3/4"—10 hex. Iron Nut.....	
51	1 3/16" x 1 1/4" Cotter Pin.....	
52	1 3/16" x 2 1/4" Cotter Pin.....	
53	1/4" x 3" Cotter Pin.....	
54	5/8" Lock Washer.....	
55	No. 14 Woodruff Key.....	
56	No. D Woodruff Key.....	
57	1/8" Pipe Plug.....	
58	3/8" Pipe Plug.....	
59	1/2" dia. Braided Torch Wicking, 52" long.....	
60	3/8" dia. Braided Torch Wicking, 32" long.....	
61	No. 1 x 1 1/8" Split Taper Pin.....	
62	5/8" hex. Jam Nut.....	

Hall Switch & Signal Company

SIGNAL MECHANISM 34.473

**Style "L" A. C. Top Post Mechanism and Case Complete for 2 or 3 Position
Upper L. H. Quadrant.**

Specify as required:

4", 5" or 6" Pipe.

Voltage and Cycle.

Extra Circuit Controller Contacts.

Pole Changer.

Resistance of Hold Clear Magnet.

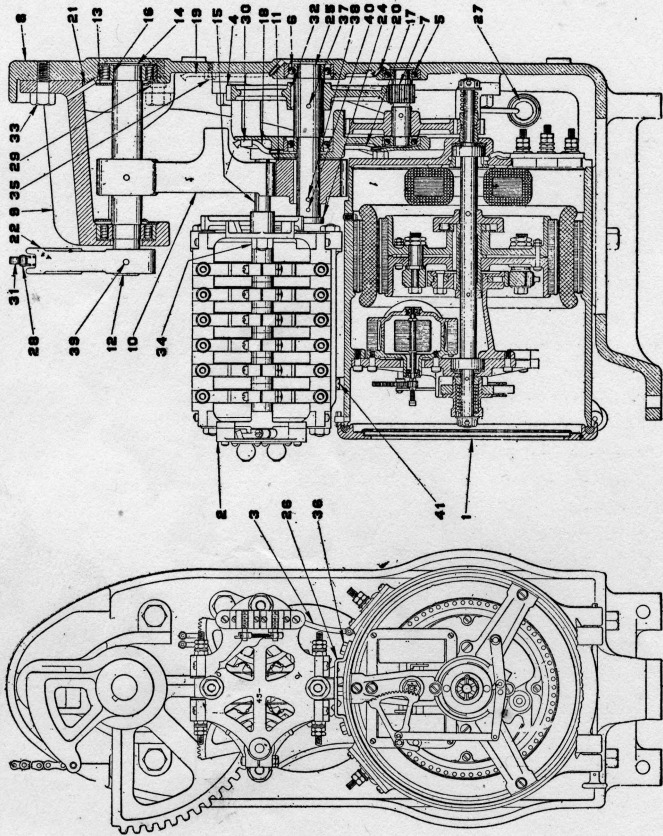
Spectacle.

**NOTE—This Mechanism is fitted similar to Mechanism 34.400, except using Motor 34.530
instead of 34.430, and Clamp Bearing 34.199 instead of 34.04.**

34.

A. C. Signal
Mechanism

Hall Switch & Signal Company



Signal Mechanism

34.500 Style L

Approximate Shipping Weight: 300 lbs.

Hall Switch & Signal Company

SIGNAL MECHANISM 34.500

Style "L" A. C. Bottom Post Mechanism Complete for 2 or 3 Position
Upper R. H. Quadrant.

Specify as required:

Voltage and Cycle.
Extra Circuit Controller Contacts.
Pole Changer.
Resistance of Hold Clear Magnet.

List of Parts

Fig. No.	NAME	Order No.
	Order by Order No. and Name	
1	Motor complete (specify Cycle and Voltage).....	34.530
2	{Circuit Controller complete	34.02
	{Circuit Controller complete, with Pole Changer.....	34.239
3	Gear Frame.....	34.71
4	Gear	34.77
5	Ball Bearing complete.....	34.135
6	Ball Bearing complete.....	34.136
7	{Gear and Pinion complete.....	34.144
	{Gear and Blade Latch complete.....	34.75
8	Frame	34.301
9	Bearing Bracket.....	34.303
10	Gear Segment	34.304
11	Pinion	34.305
12	Shaft	34.308
13	Washer	34.309
14	Washer	34.310
15	Stud	34.312
16	Roller Bearing complete.....	34.315
17	Oil Tube	34.316
18	Oil Tube	34.317
19	Oil Tube	34.318
20	Oil Tube	34.319
21	Oil Tube	34.320
22	Sector	34.322
23	Sub-base	34.324
24	Pinion	34.328

Hall Switch & Signal Company

SIGNAL MECHANISM 34.550

**Style "L" A. C. Double Bottom Post Mechanism Complete for 2 or 3 Position
Upper R. H. Quadrant.**

Specify as required:

Voltage and Cycle.

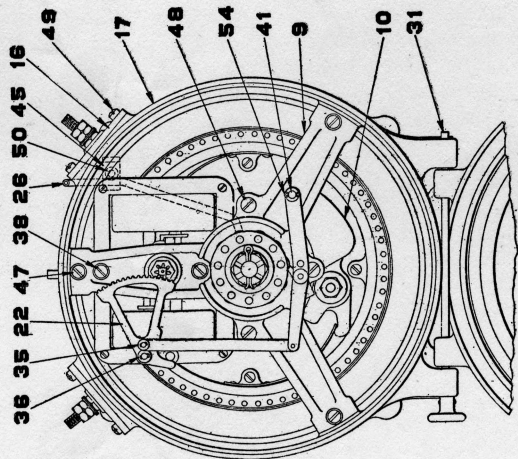
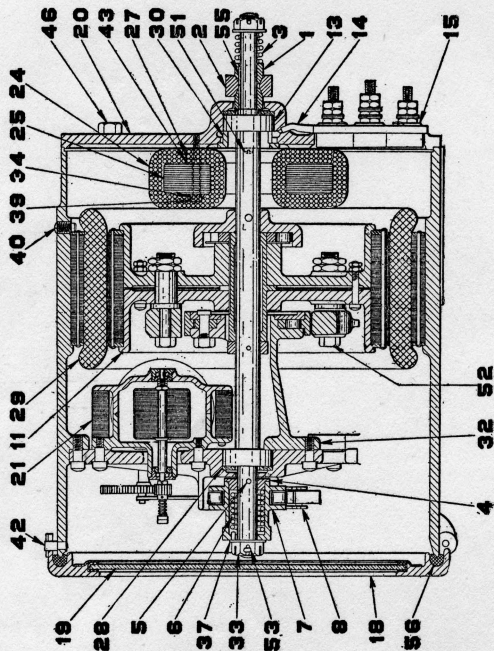
Extra Circuit Controller Contacts.

Pole Changer.

Resistance of Hold Clear Magnet.

NOTE— This Mechanism consists of one single Mechanism 34.500 and one single Mechanism fitted similar to 34.500, except using Motor 34.430, Shaft 34.351 and Sub-base 34.321.

Hall Switch & Signal Company



A. C. MOTOR
Approximate Shipping Weight, 101 Lbs.

Hall Switch & Signal Company

A. C. MOTORS

No. 34.430, Clockwise Rotation
No. 34.530, Counter-clockwise Rotation

List of Parts

Fig. No.	NAME	Order No.
	Order by Order No. and Name	
1	Cone	34.36
2	Pinion	34.37
3	Clutch Spring.....	34.38
4	Collar for Spring Stop.....	34.39
5	Pin for Collar.....	34.40
6	Roller Carrier Spring.....	34.112
7	Roller Carrier complete	34.117
8	{ Hold Clear Arm complete (for 34.430).....	34.213
	{ Hold Clear Arm complete (for 34.530).....	34.214
9	Motor Shaft Bearing, front.....	34.220
10	Governor Weight.....	34.223
11	{ Rotor complete (for 34.430).....	34.224
	{ Rotor complete (for 34.530).....	34.224A
12	Brake Buffer.....	34.231
13	Roller Bearing.....	34.240
14	Oil Drainage Tube.....	34.241
15	Terminal Block complete.....	34.243
16	Terminal Block complete.....	34.244
17	Motor Frame.....	34.251
18	Motor Door complete.....	34.252
19	Glass	34.256
20	Motor Bearing, rear.....	34.257
21	Relay complete (specify Cycle and Voltage).....	34.271
22	Gear Segment complete.....	34.282
23	Relay Coil (specify Cycle and Voltage).....	34.291
24	Reactance Coil (specify Cycle and Voltage).....	34.292
25	Lamination complete.....	34.293
26	Oil Tube.....	34.297
27	Spacer	34.298
28	Washer	34.299
29	Stator complete (specify Cycle and Voltage).....	34.417
30	Gland	34.422
31	Pin	34.426

Hall Switch & Signal Company

A. C. MOTORS

No. 34.430, Clockwise Rotation

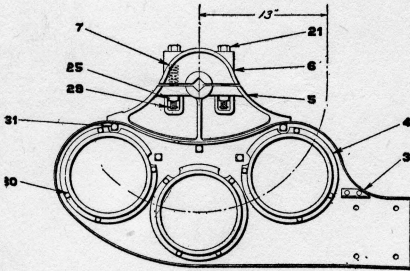
No. 34.530, Counter-clockwise Rotation

List of Parts

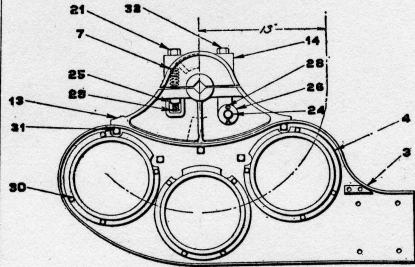
Fig. No.	NAME	Order No.
32	Governor Ratchet complete (for 34.430).....	34.433
	Governor Ratchet complete (for 34.530).....	34.437
33	Nut	3.641
34	Washer	3.700
35	Washer	3.708
36	Washer	3.788
37	Washer	3.822
38	Special Screw.....	3.835
39	Special Screw.....	3.839
40	Special Screw.....	3.840
41	Stud	4.310
42	Stud	4.313
43	Insulating Washer.....	8.544
44	Washer	8.672
45	Clamp for Wire Tube.....	43.185
46	$\frac{1}{8}$ "—18 x $\frac{3}{4}$ " hex. hd. Iron Cap Screw.....	
47	No. 14—24 x $\frac{3}{4}$ " fl. hd. Iron Machine Screw.....	
48	No. 14—24 x $\frac{1}{8}$ " fl. hd. Iron Machine Screw.....	
49	No. 10—32 x $\frac{1}{2}$ " fl. hd. Iron Machine Screw.....	
50	No. 10—32 x $\frac{1}{2}$ " flat hd. Iron Machine Screw.....	
51	No. 8—32 x $\frac{3}{8}$ " fl. hd. Iron Machine Screw.....	
52	No. 14—24 hex. Iron Nut.....	
53	$\frac{1}{8}$ " x $\frac{7}{8}$ " Cotter Pin.....	
54	$\frac{1}{8}$ " x $\frac{3}{8}$ " Cotter Pin.....	
55	No. 2 Woodruff Key.....	
56	$\frac{3}{8}$ " x 32" Braided Torch Wicking.....	

Hall Switch & Signal Company

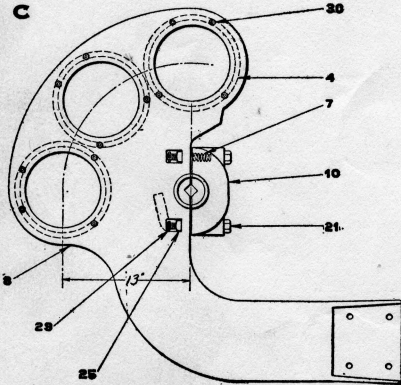
A



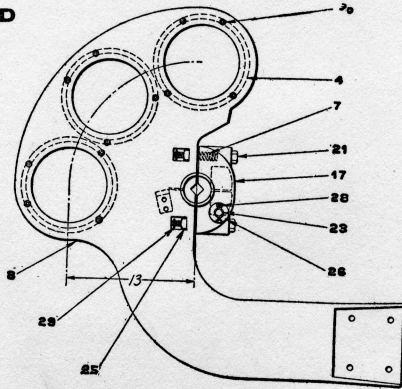
B



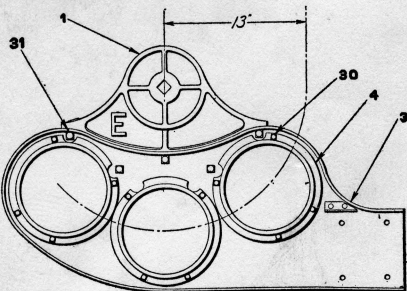
C



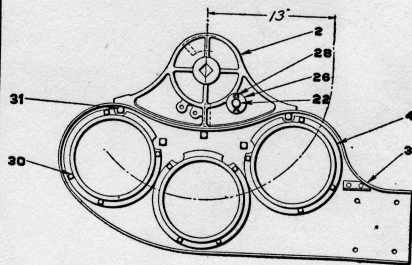
D



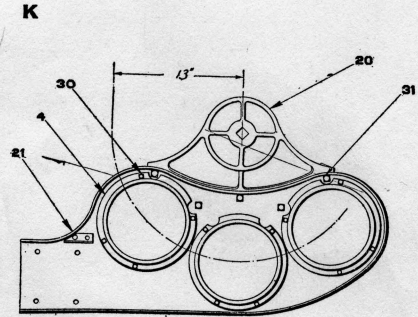
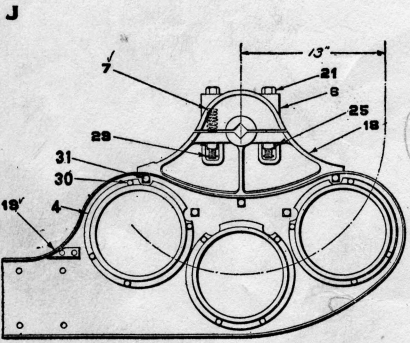
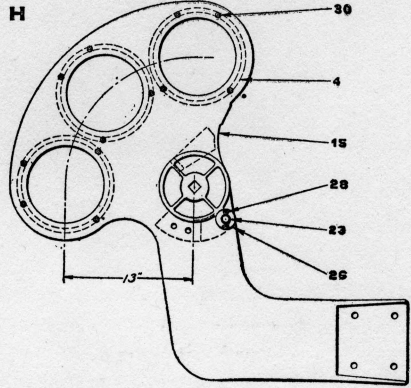
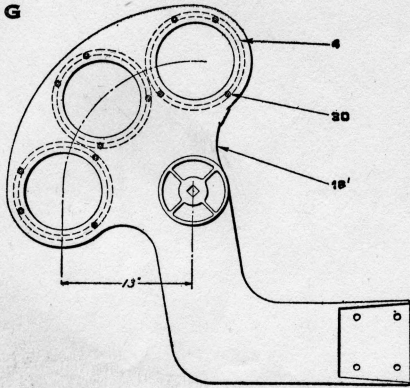
E



F



Hall Switch & Signal Company



Hall Switch & Signal Company

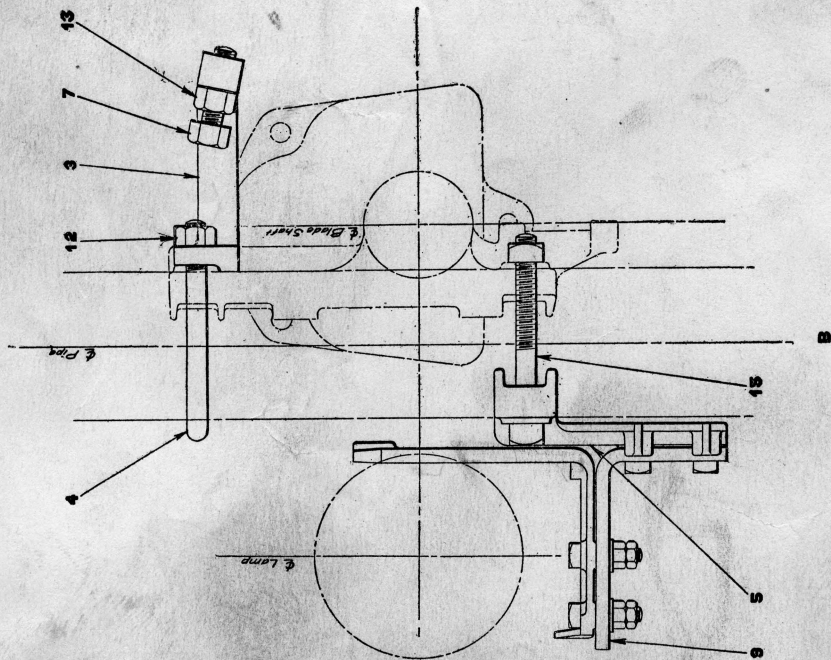
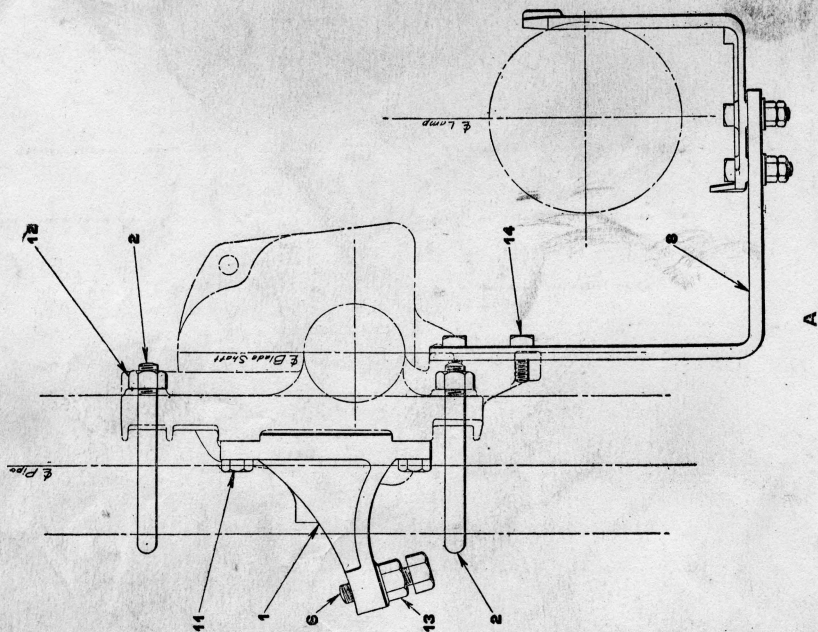
UPPER QUADRANT SPECTACLES

Types

Fig. No.	NAME	Order No.
Order by Order No. and Name		
A	Clamp Type Spectacle for Automatic Signal.....	45.2087
B	Clamp Type Spectacle for Mechanical Signal.....	45.2075
C	Clamp Type Staggered Light Spectacle for Automatic Signal	45.2043
D	Clamp Type Staggered Light Spectacle for Mechanical Signal	45.2129
E	R. S. A. Type Spectacle for Automatic Signal.....	45.1619
F	R. S. A. Type Spectacle for Mechanical Signal.....	45.1618
G	R. S. A. Type Staggered Light Spectacle for Automatic Signal	45.1623
H	R. S. A. Type Staggered Light Spectacle for mechanical Signal	45.1622
J	Clamp Type Spectacle for L. H. Quad. Automatic Signal	45.2133
K	R. S. A. Type Spectacle for L. H. Quad Automatic Signal	45.2134

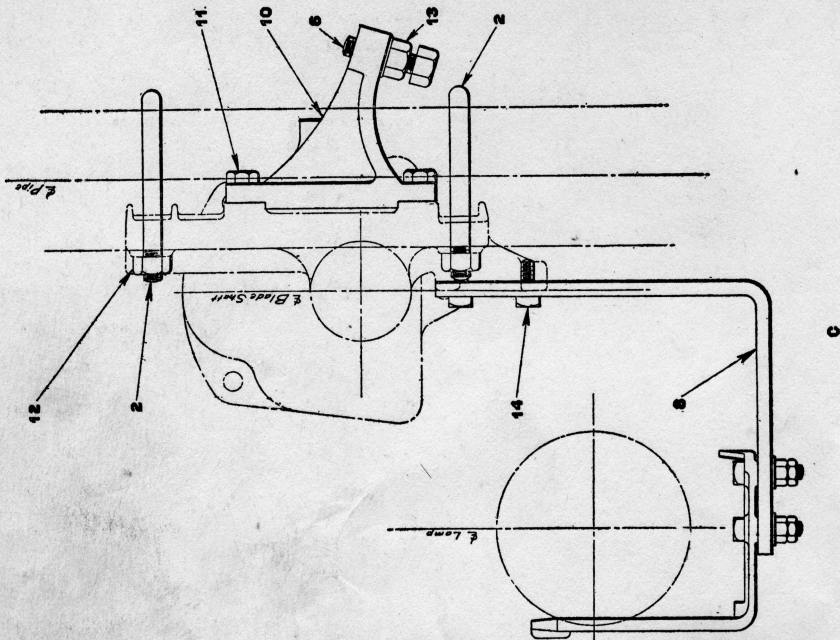
Stop and
Lamp Bracket
Arrangement

Hall Switch & Signal Company



Stop and
Lamp Bracket
Arrangement

Hall Switch & Signal Company



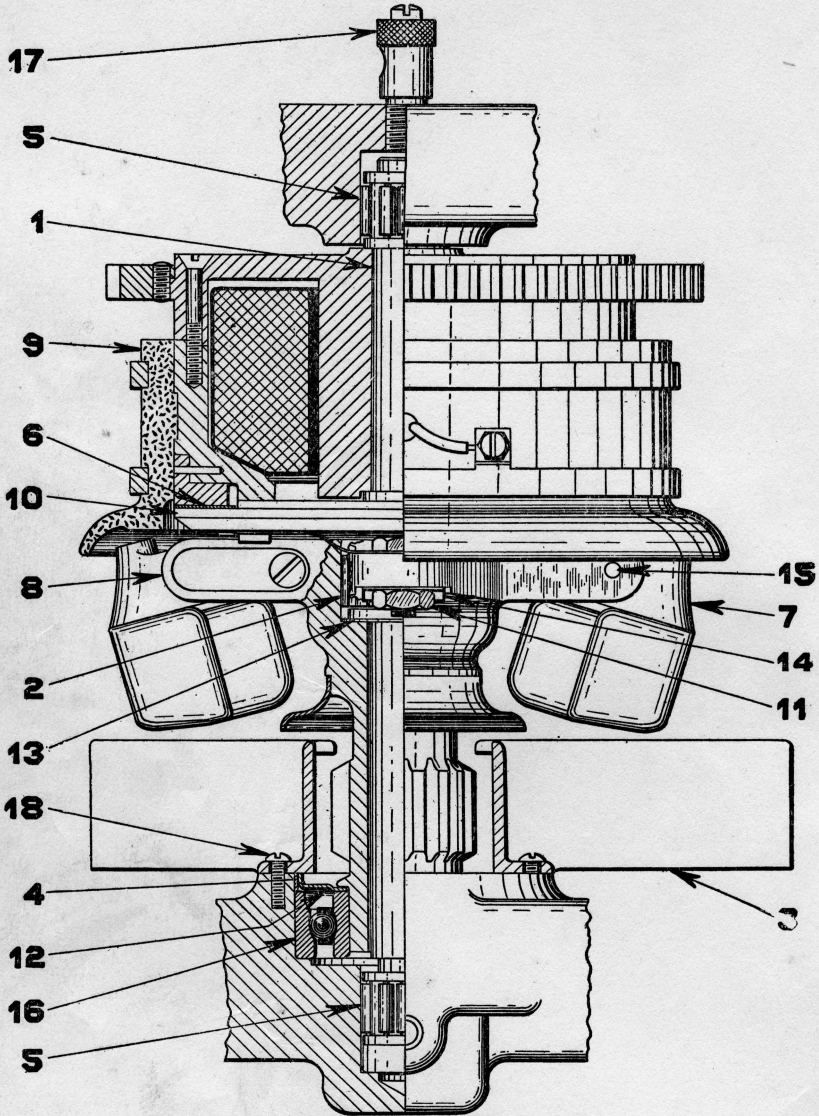
Hall Switch & Signal Company

STOP AND LAMP BRACKET ARRANGEMENT

Types and List of Parts

Fig. No.	NAME	Order No.
	Order by Order No. and Name	
A	Stop and Lamp Bracket Arrangement for Upper R. H. Quad. Spectacle.....	
B	Stop and Lamp Bracket Arrangement for Upper R. H. Quad. Staggered Light Spectacle.....	
C	Stop and Lamp Bracket Arrangement for Upper L. H. Quad. Spectacle.....	
1	Stop	34.12
2	U Bolt.....	34.90
3	Stop	34.124
4	U Bolt.....	34.125
5	Lamp Bracket Clamp.....	34.194
6	Stop Bolt.....	3.590
7	Stop Bolt.....	3.893
8	Lamp Bracket complete.....	45.2036
9	Lamp Bracket complete.....	45.2094
10	Stop	45.2135
11	$\frac{5}{8}$ "—11 hex. hd. Cap Screw, $1\frac{1}{2}$ " long.....	
12	$\frac{3}{4}$ "—10 hex. Nut.....	
13	$\frac{3}{4}$ "—10 hex. Nut, $\frac{1}{2}$ " thick.....	
14	$\frac{1}{2}$ "—13 x $1\frac{3}{4}$ " sq. hd. Tap Bolt.....	
15	$\frac{3}{4}$ "—10 x $7\frac{1}{2}$ " sq. hd. Bolt and Nut.....	

Hall Switch & Signal Company



Clutch Magnet and Governor

Style K

Approximate Shipping Weight: 90 lbs.

Hall Switch & Signal Company

CLUTCH MAGNET AND GOVERNOR
FOR STYLE "K" MECHANISM

List of Parts

Fig. No.	NAME	Order No.
Order by Order No. and Name		
1	Shaft complete.....	33.16
2	Roller Bearing complete.....	33.56
3	Shield	33.60
4	Retaining Ring.....	33.61
5	Roller Bearing complete.....	33.72
6	Friction Ring.....	33.297
7	Governor Weight complete.....	33.405
8	Governor Support complete.....	33.431
9	Clutch Magnet complete.....	33.432
10	Armature complete.....	33.438
11	Nut	3.534
12	Thrust Washer.....	3.756
13	Washer	3.857
14	Lock Washer.....	3.861
15	Pin	4.114
16	Ball Bearing complete (Norma No. L-25).....	34.136
17	Oiler (Bowen Mfg. Co., No. 4 Style D) 1/8" Pipe Tap.....	34.137
18	No. 6—32 x 3/8" round hd. Brass Machine Screw.....	

