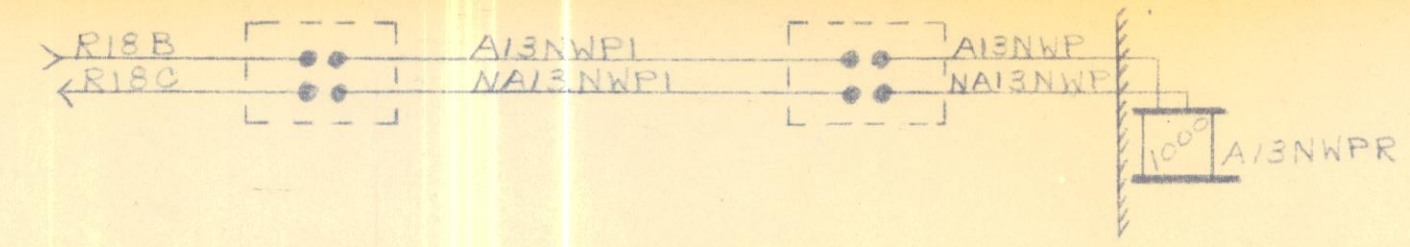


CONNECTS TO SHEET 1 OF SHEET #57 1/2

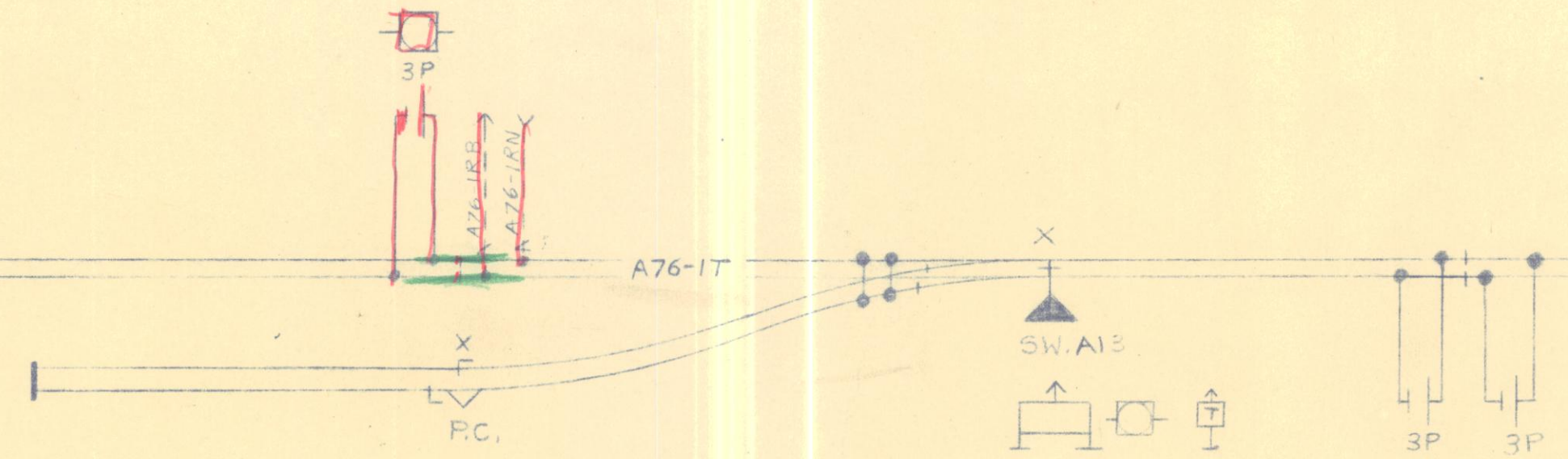
75



B76-1T

A76-1T

76-1T



R18B
A-13NWLK1
CODE -
L18HD3
R18NGP1
76-1HDG4
76-1RGPP

13WLP
L18RGPP
X74.68WTE3
CODE +
NL18HD3
R18C
N76-1HDG4
R18AR2



R18B

CODE -
L18HD
R18NGP1
76-1HDG2
76-1RGPP

CODE +
NL18HD
R18C
N76-1HDG2
R18AR3

DATE	REVISIONS
	SUPERCEDES OLD SHEET 58 LAST REVISED 6-21-54
4-17-58	INSTALLED REMOTE CONTROL HUBBARD TO COLES

ERIE RAILROAD COMPANY
OFFICE OF GENL. SUPT. COMMS. & SIGNALS
CIRCUITS AT
SW. A13
HUBBARD, OHIO
SHEET 1 OF 3 SHEETS

CONNECTS TO SHEET 1 OF SHEET # 58

