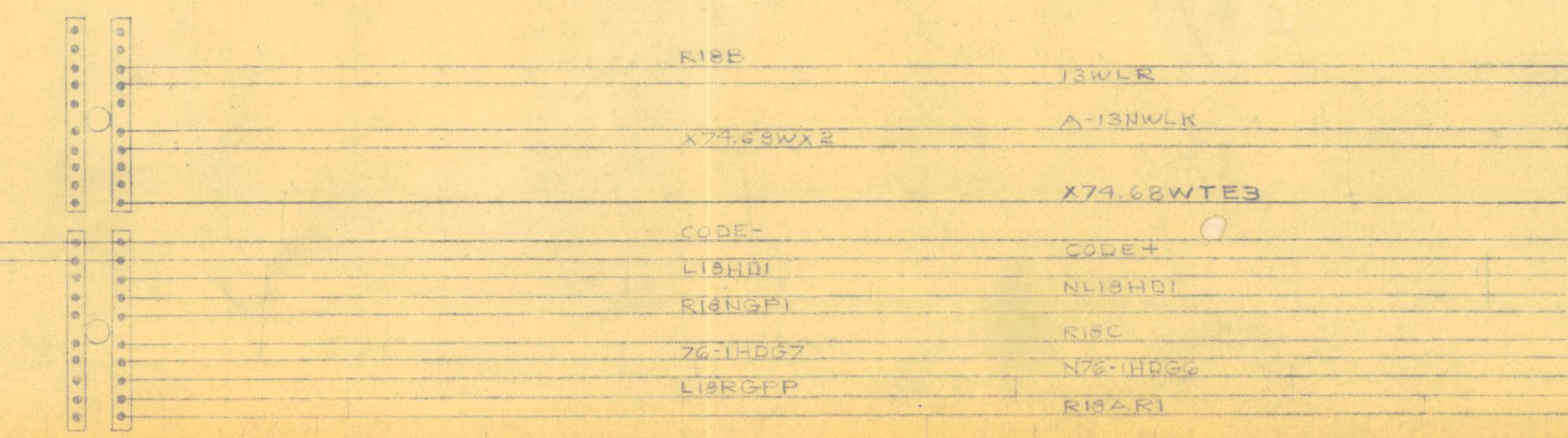
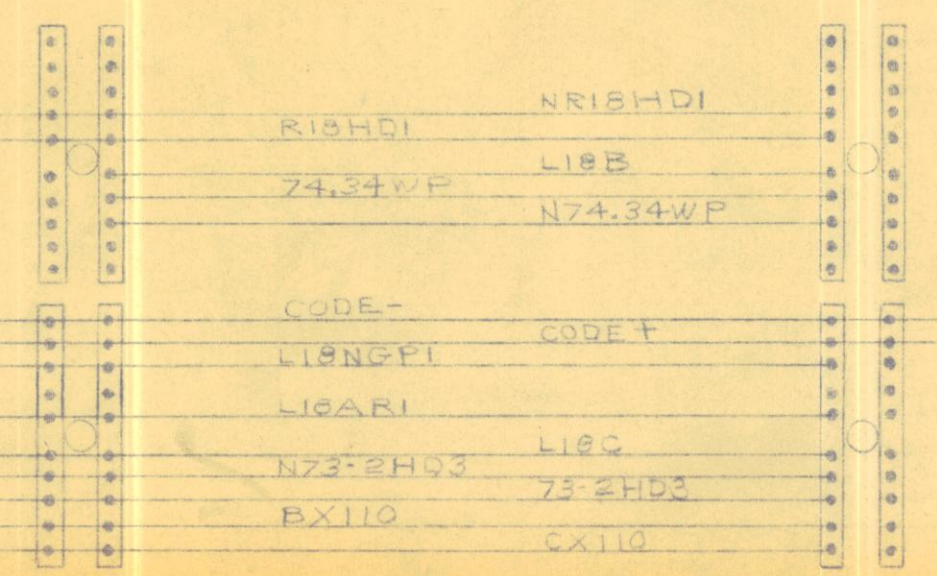
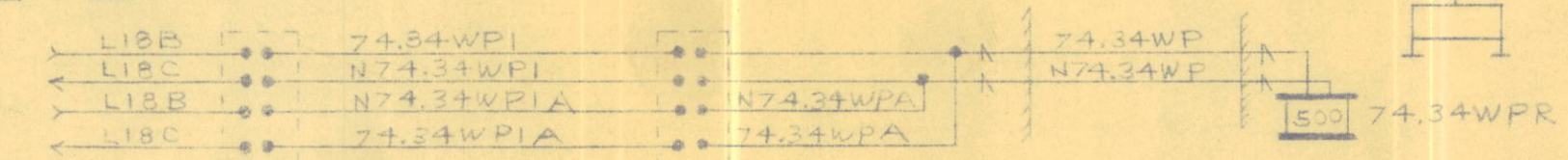
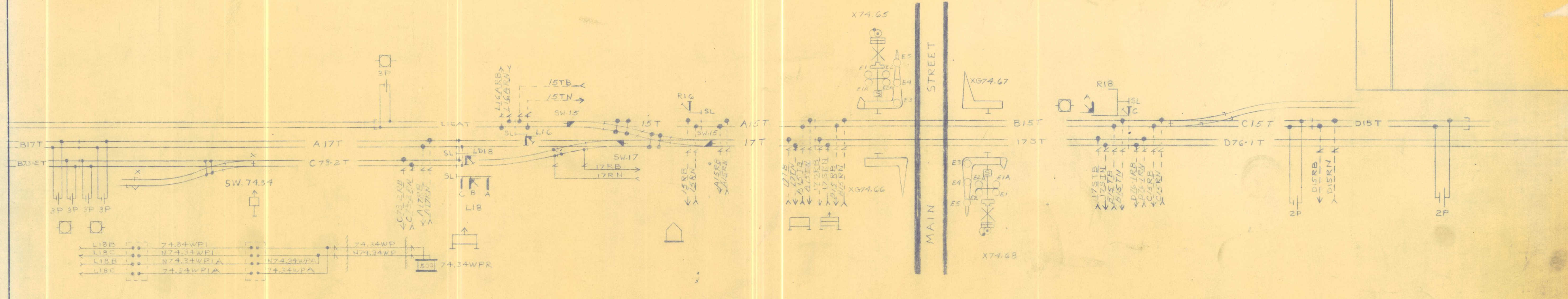


DATE	REVISIONS
4-17-58	INSTALLED REMOTE CONTROL HUBBARD TO COLES
9-14-59	INSTALLED AUTO GATES AT MAIN ST.

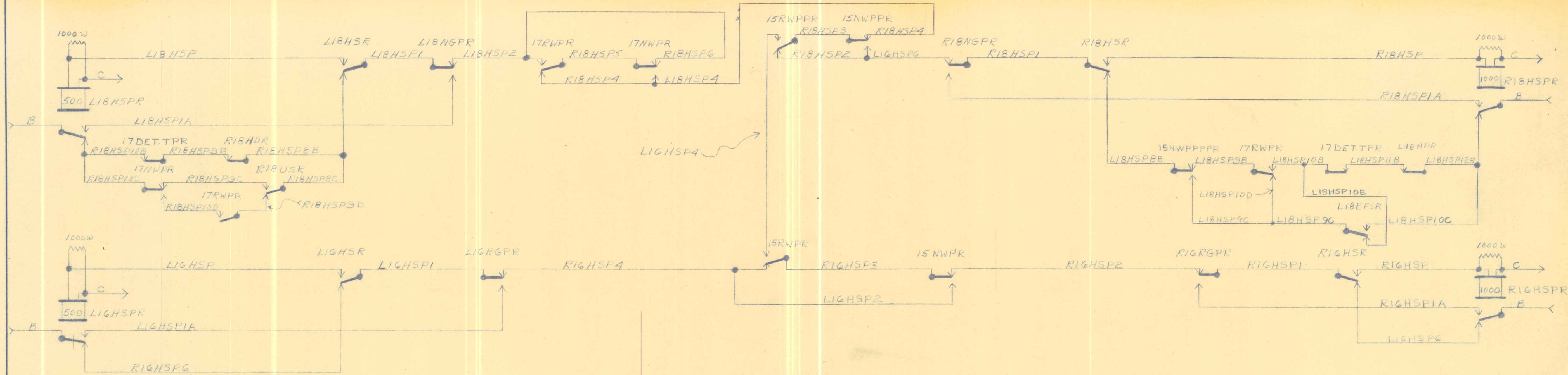
CONNECTS TO SHEET 1 OF SHEET 56 3/4



ERIE RAILROAD COMPANY
 OFFICE OF GENL. SUPT. COMMS. & SIGNALS
 CIRCUITS AT
"A B"
HUBBARD, OHIO

SHEET 1 OF 21 SHEETS

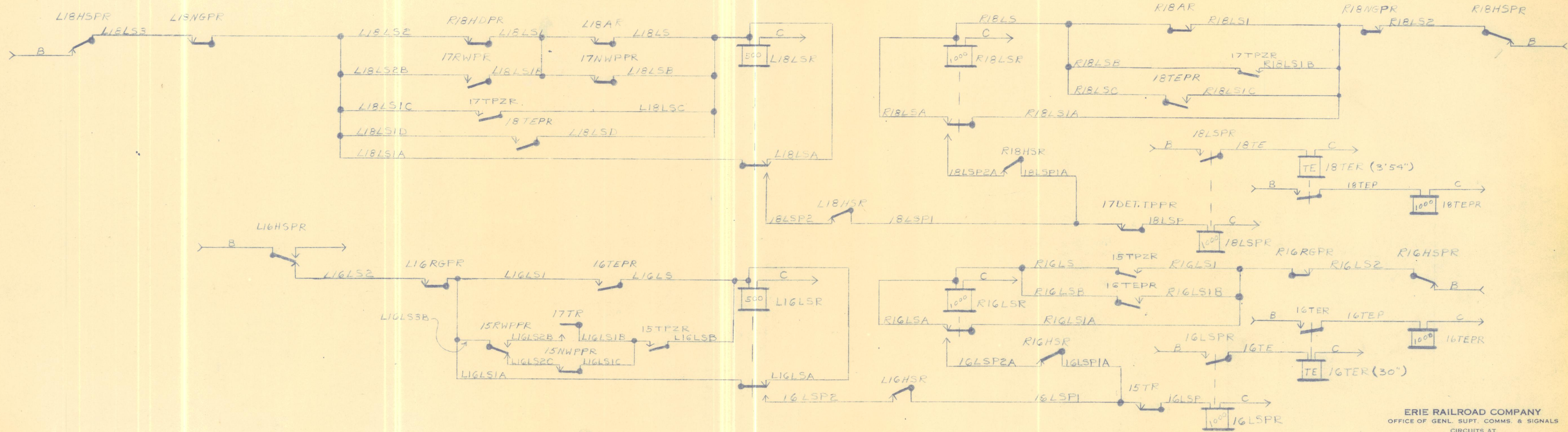
CONNECTS TO SHEET 1 OF SHEET # 57 1/2



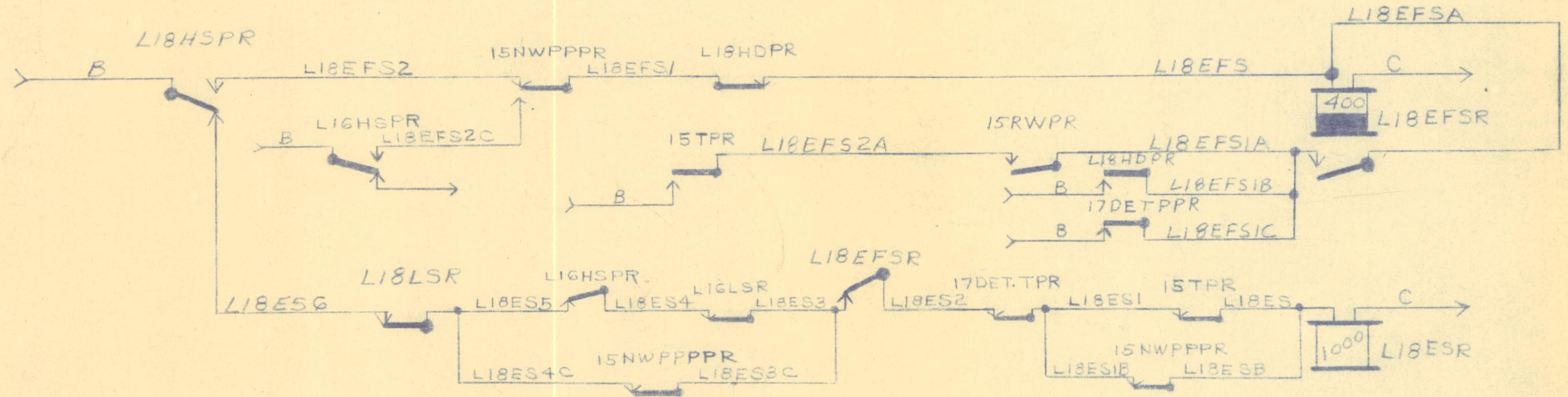
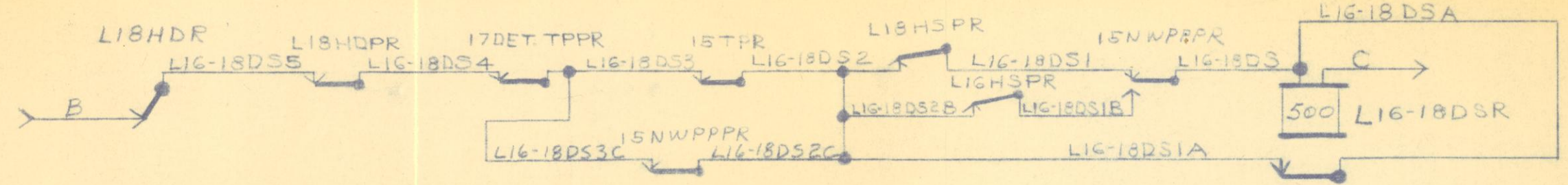
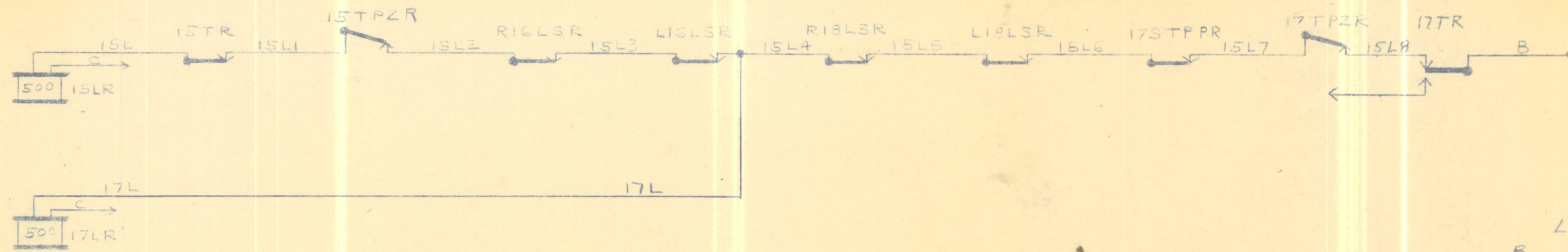
ERIE RAILROAD COMPANY
 OFFICE OF GENL. SUPT. COMMS. & SIGNALS
 CIRCUITS AT
"A B"
 HUBBARD, OHIO
 SHEET 3 OF 21 SHEETS

REV. 9-14-59

MAHONING 1ST DIST. DIVISION SHEET #57



ERIE RAILROAD COMPANY
 OFFICE OF GENL. SUPT. COMMS. & SIGNALS
 CIRCUITS AT
"A B"
 HUBBARD, OHIO

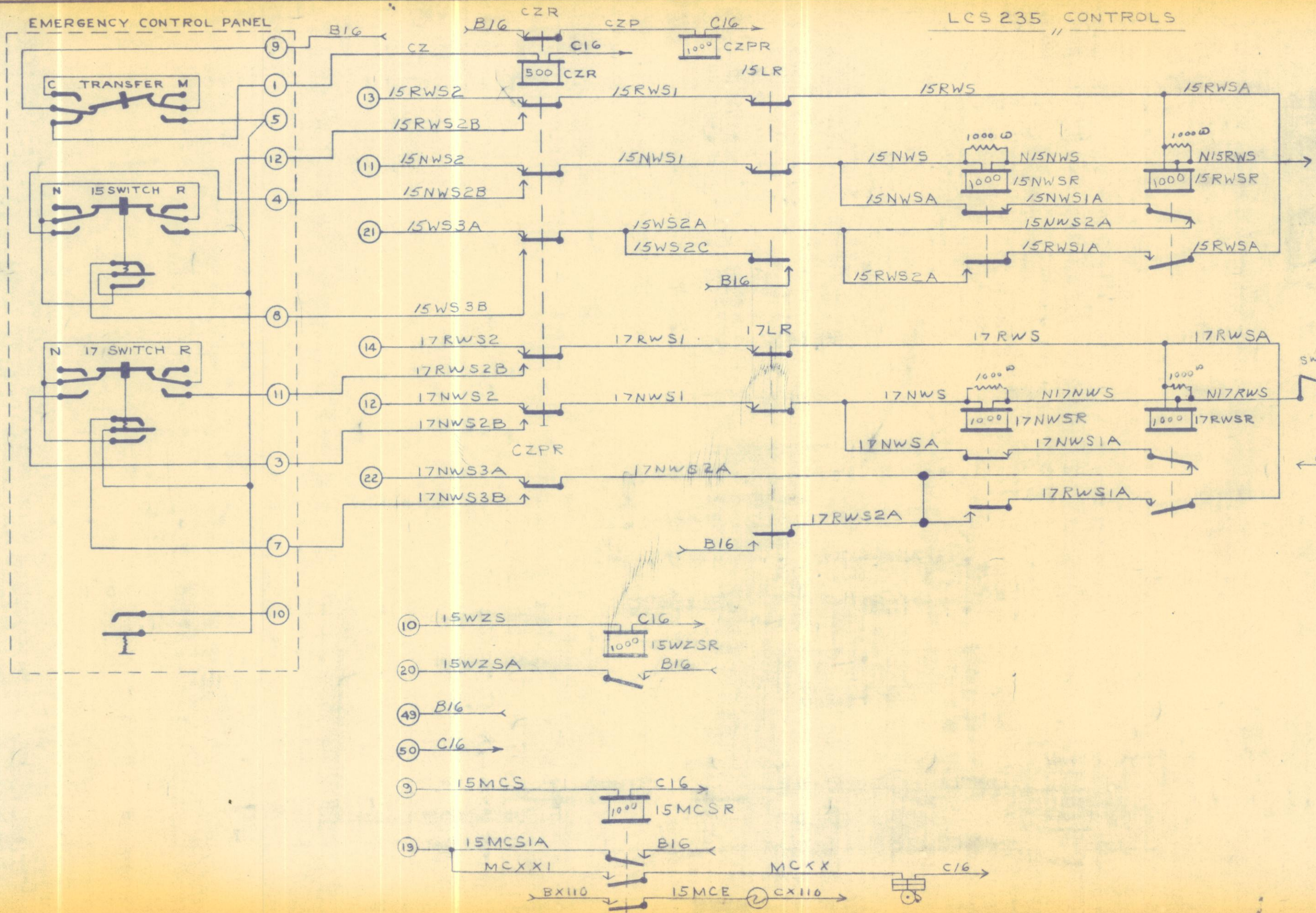


ERIE RAILROAD COMPANY
 OFFICE OF GENL. SUPT. COMMS. & SIGNALS
 CIRCUITS AT
 "A B"
 HUBBARD, OHIO

SHEET 6 OF 21 SHEETS

REV. 2-14-59

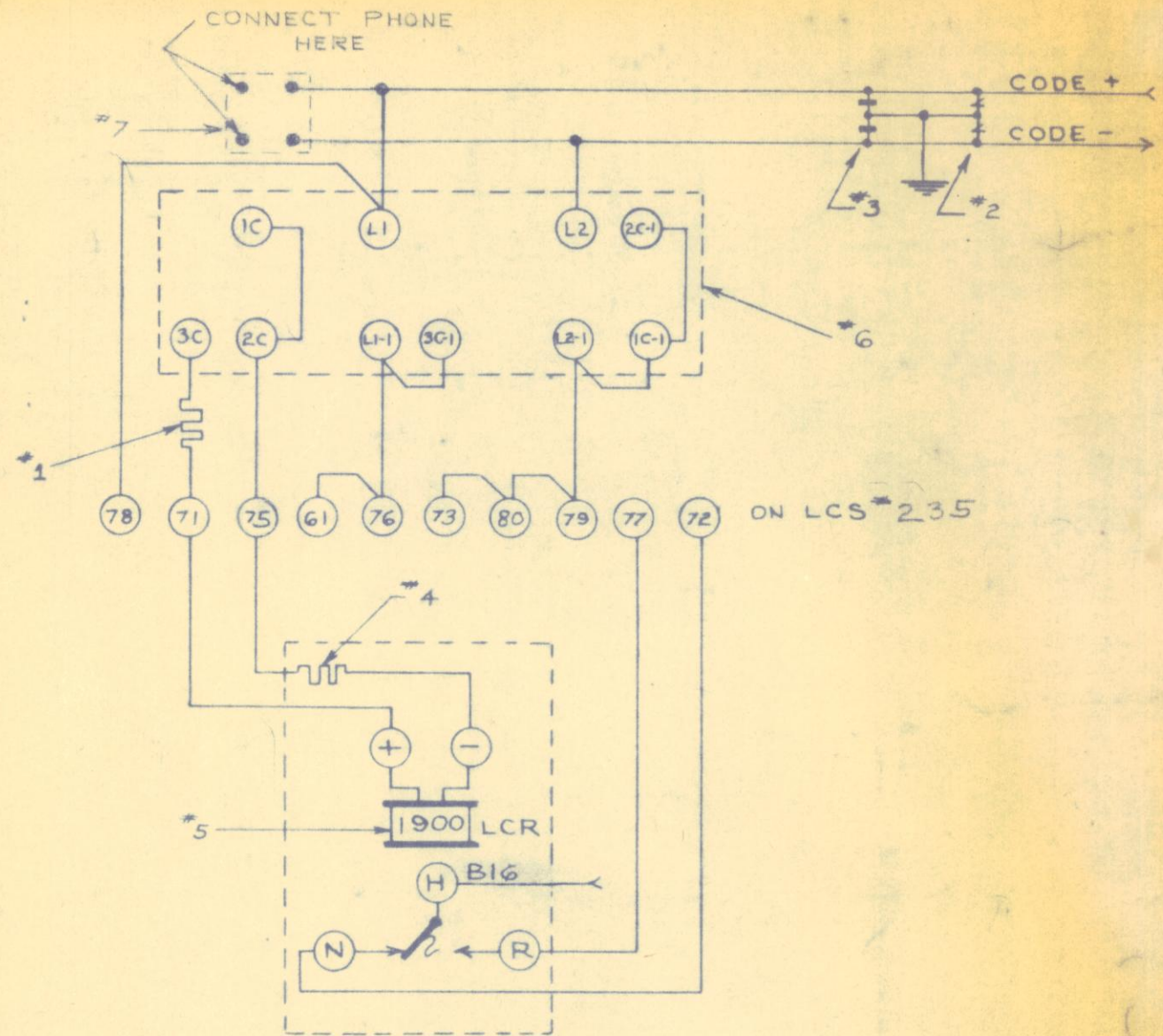
MAHONING 1ST DIST. DIVISION SHEET # 57



JUMPERS ON LCS UNIT FOR STATION SELECTION

STATION	UNIT	TERMINAL POST NUMBERS						
235	LCS	52-59	53-60	26-55	62-69	63-70	29-65	25-51
JUMPERS BETWEEN LCS & STORAGE UNITS								
237	S	26-57	29-67					
238	S	26-58	29-68					
236	S	26-56	29-66					

MULTIPLE CONNECTIONS BETWEEN LIKE NUMBERED TERMINALS ON LCS & ALL STORAGE UNITS
24 TO 50 INCLUSIVE EXCEPT 26 & 29



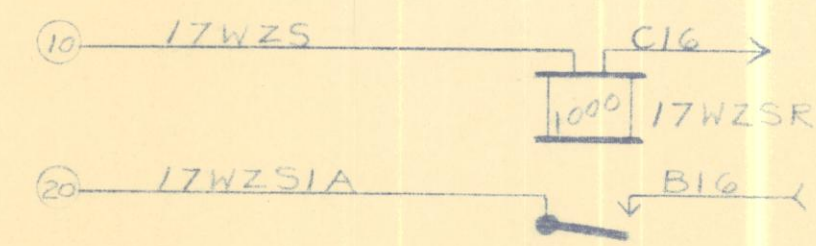
ERIE RAILROAD COMPANY
Office of Genl. Supt. Comms. & Sign.
CIRCUITS AT

"A B"

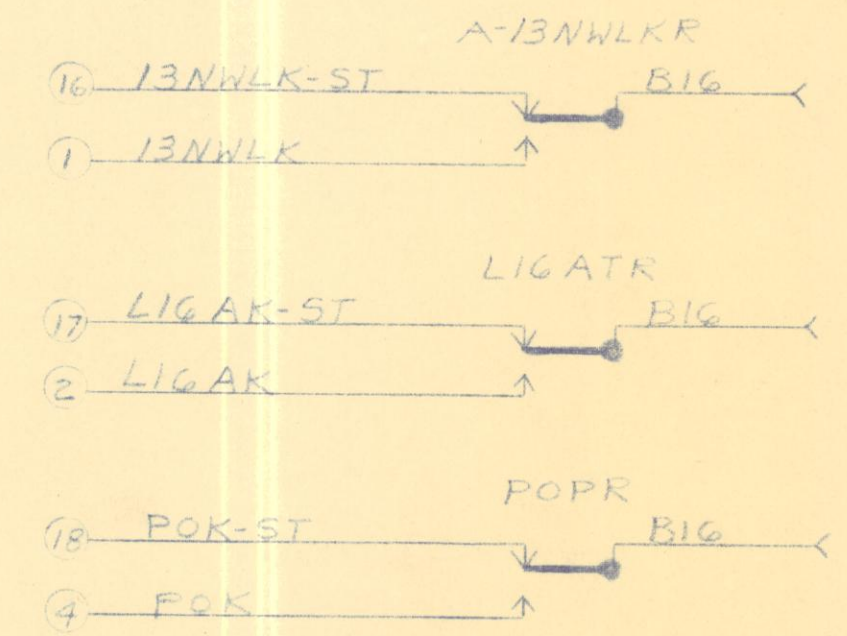
HUBBARD, OHIO

SHEET 7 OF 21 SHEETS

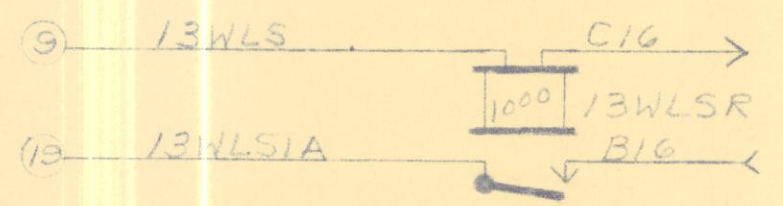
STORAGE UNIT 238 CONTROLS



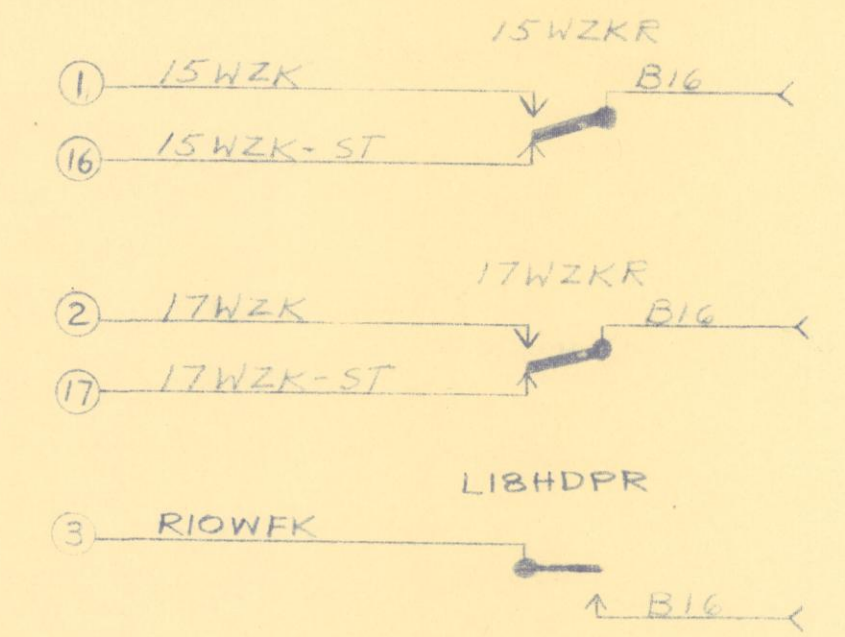
STORAGE UNIT 238 INDICATIONS



STORAGE UNIT 236 CONTROLS



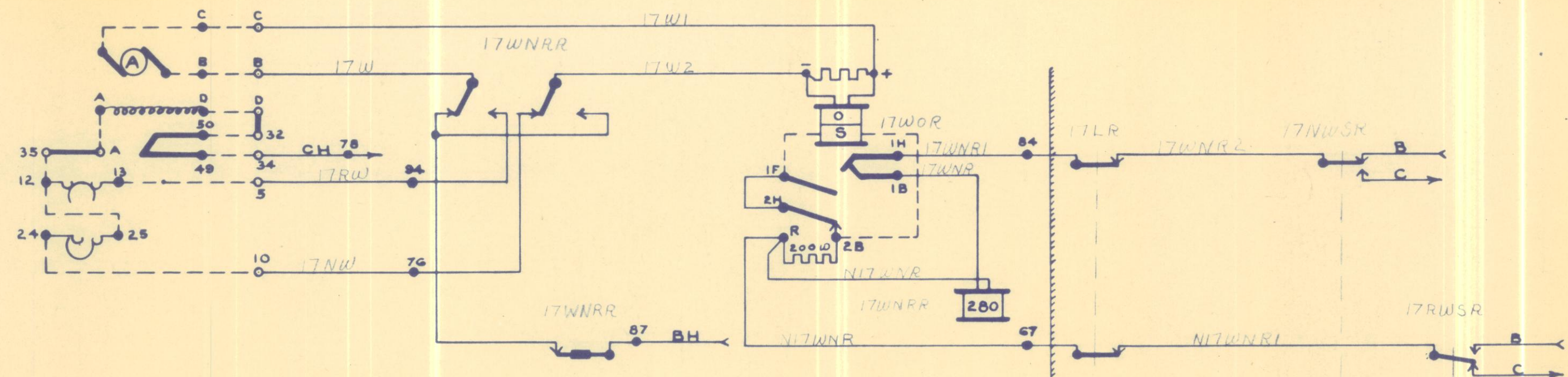
STORAGE UNIT 236 INDICATIONS



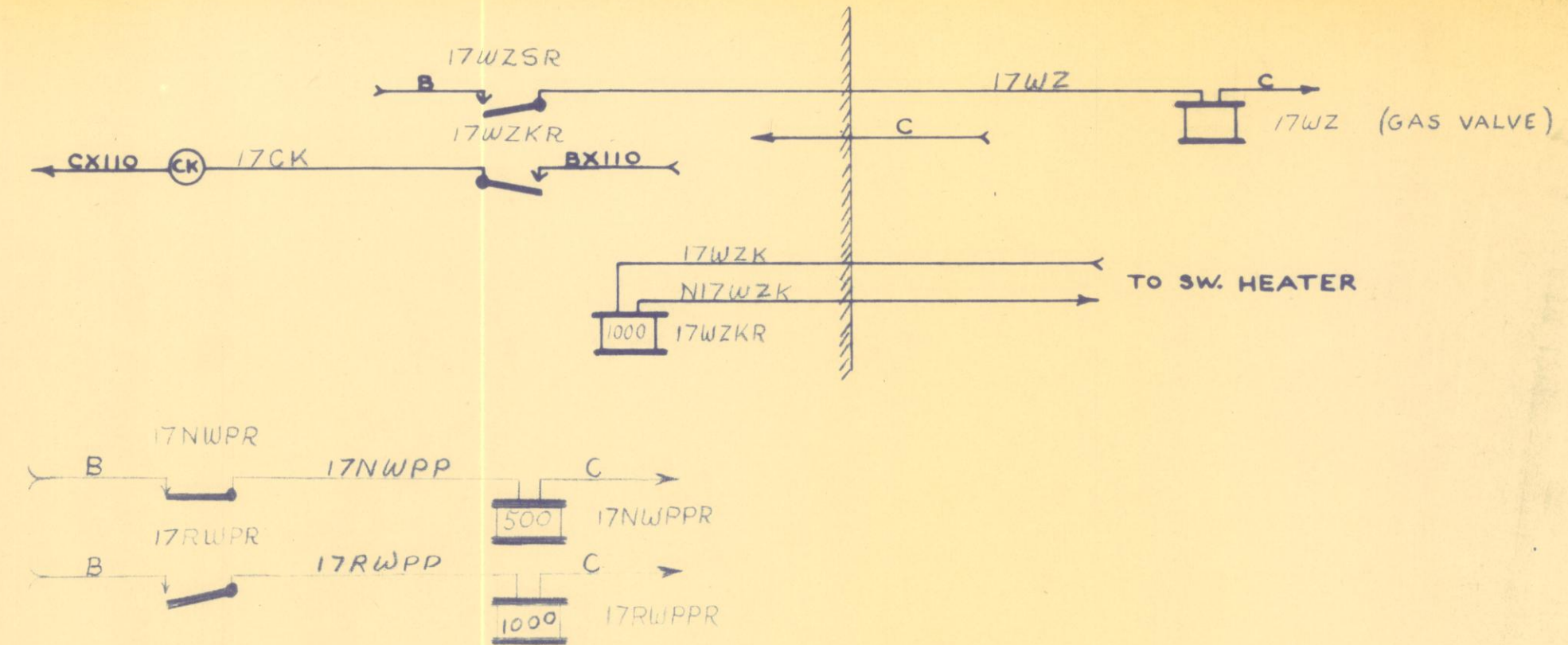
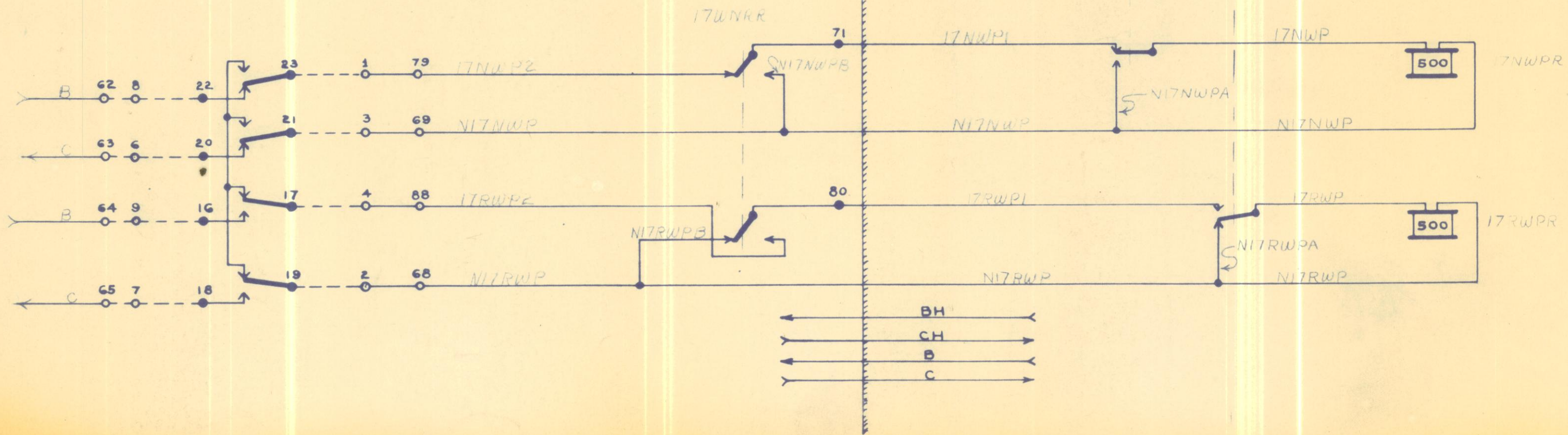
ERIE RAILROAD COMPANY
 OFFICE OF GENL. SUPT. COMMS. & SIGNALS
 CIRCUITS AT
 "AB"
 HUBBARD, OHIO

SHEET 9 OF 21 SHEETS

CONTROL CIRCUIT FOR SWITCH 17

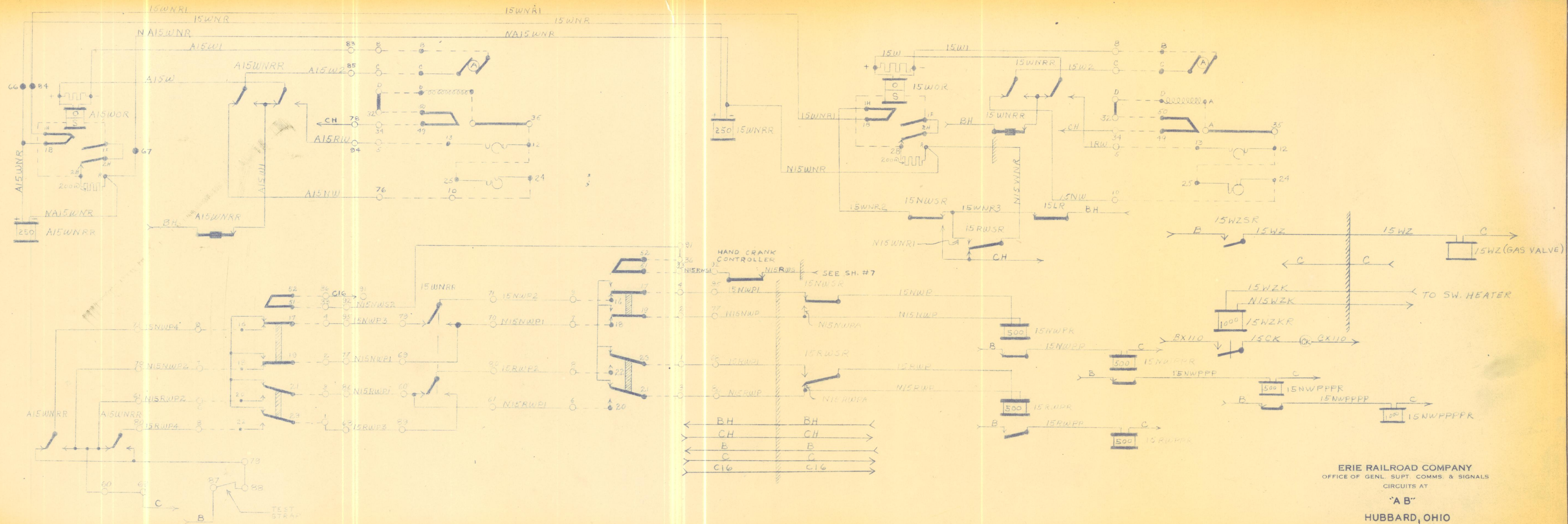


NEUTRAL SW. REPEATER CIRCUIT FOR SW. 17

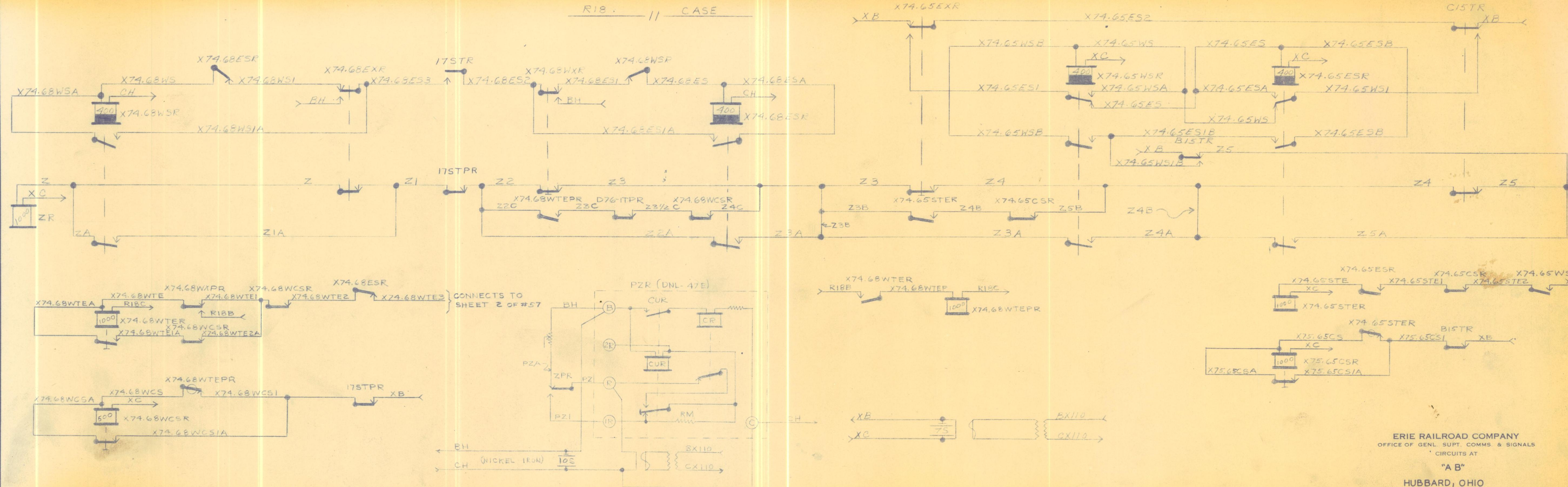


ERIE RAILROAD COMPANY
Office of Genl. Supt. Comms. & Signal
CIRCUITS AT

"AB" HUBBARD, OHIO



ERIE RAILROAD COMPANY
 OFFICE OF GENL. SUPT. COMMS. & SIGNALS
 CIRCUITS AT
 "A B"
 HUBBARD, OHIO

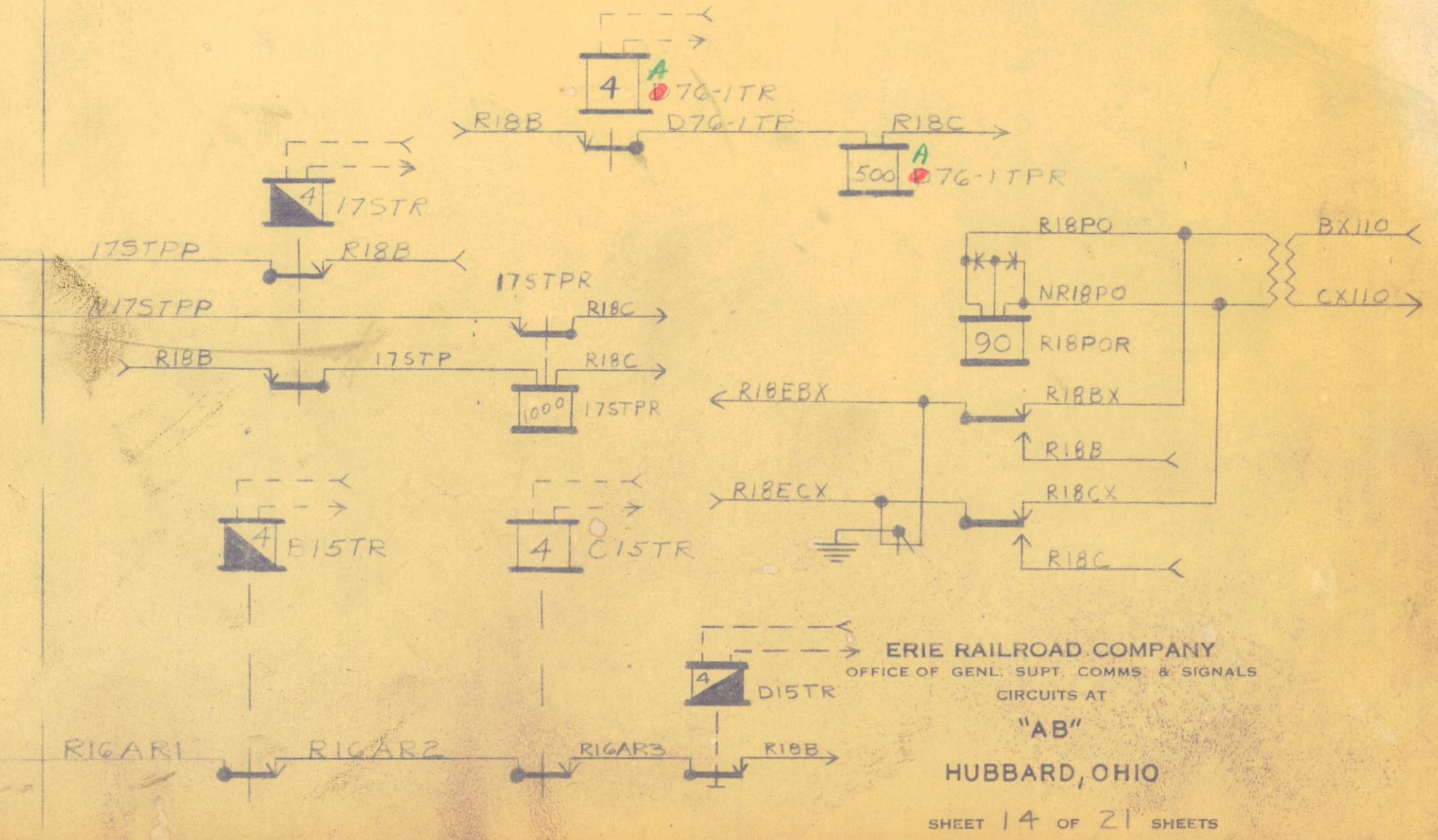
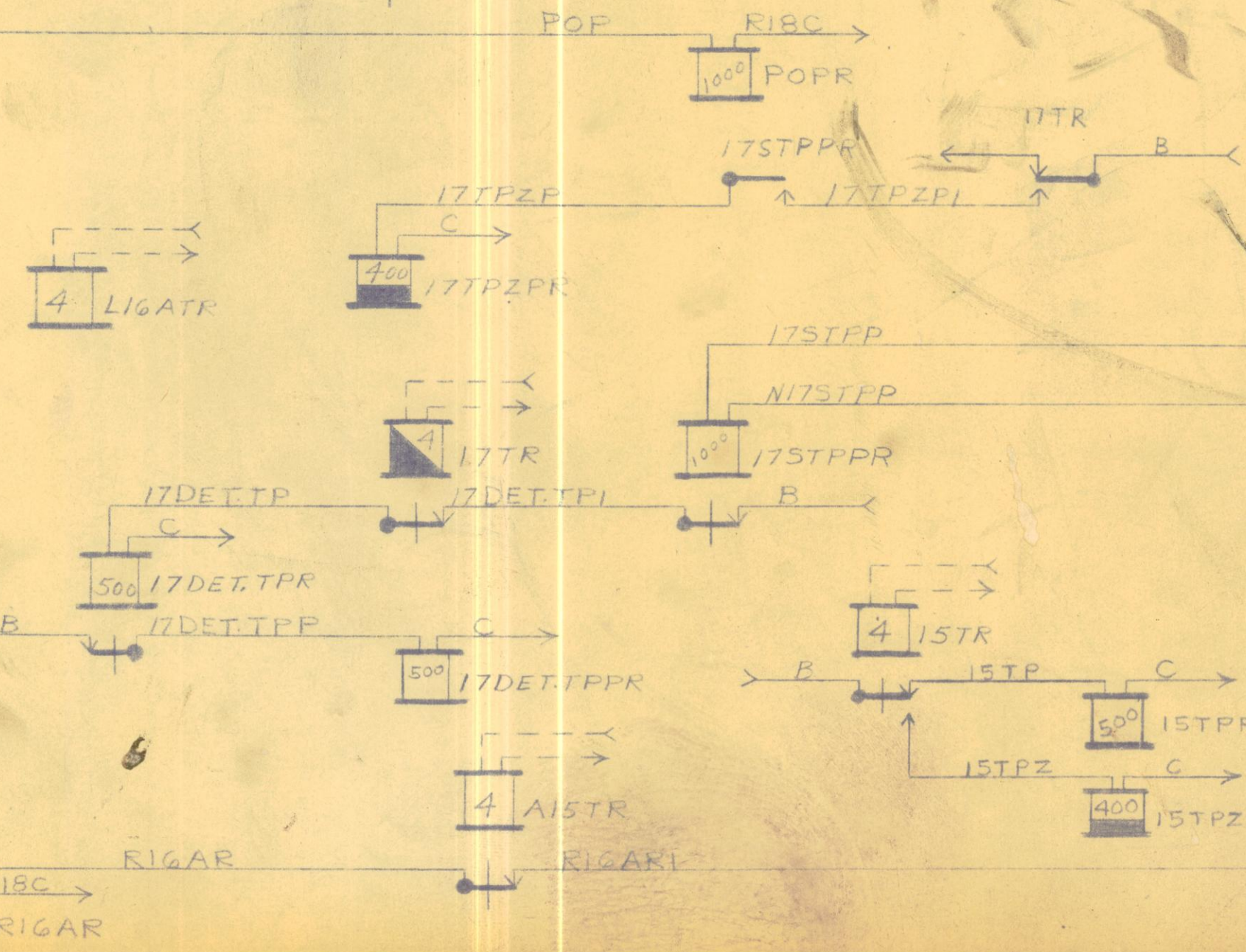
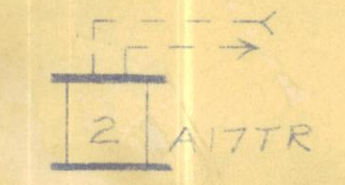
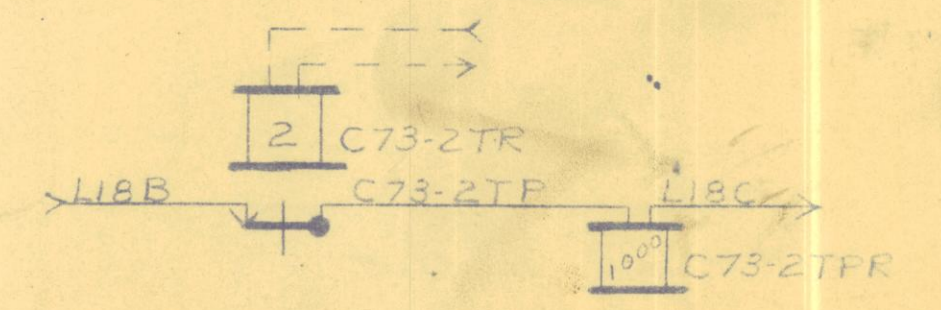
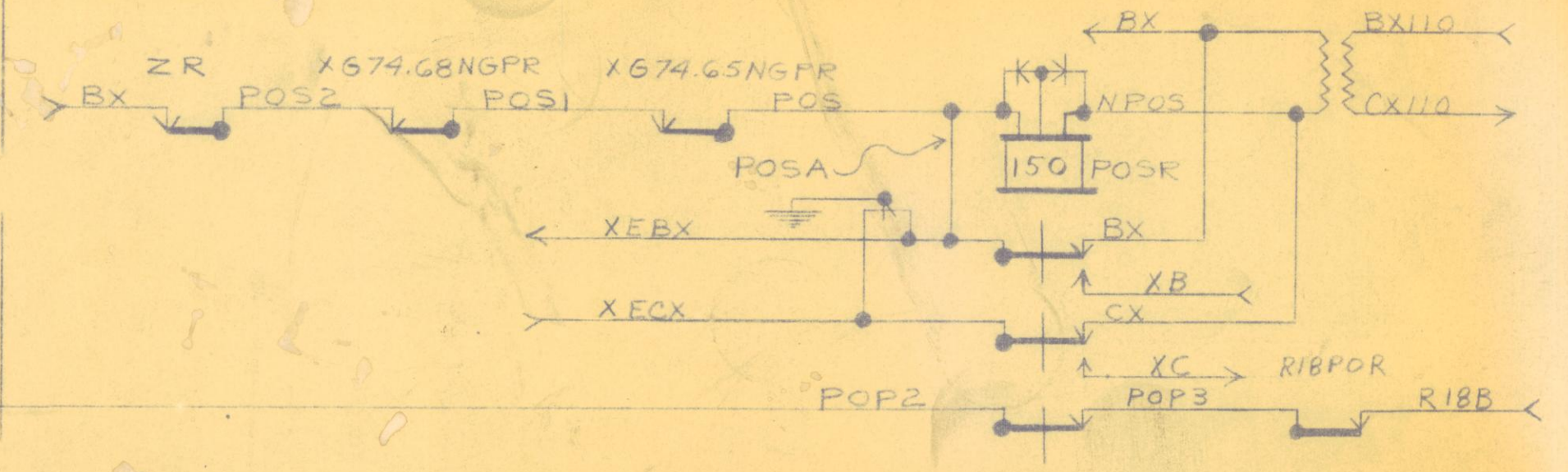
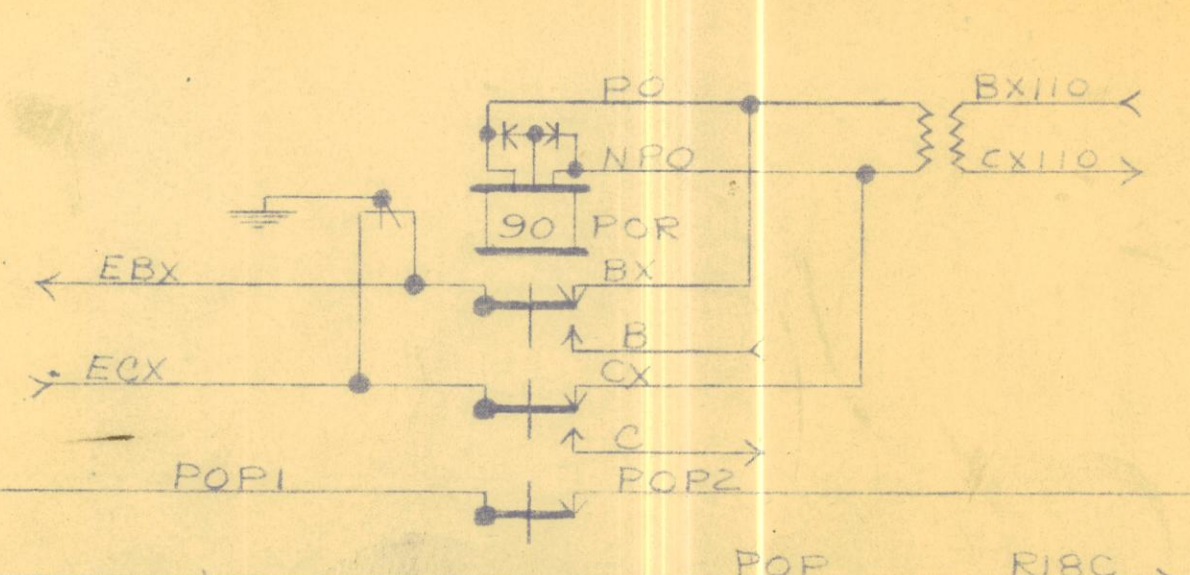
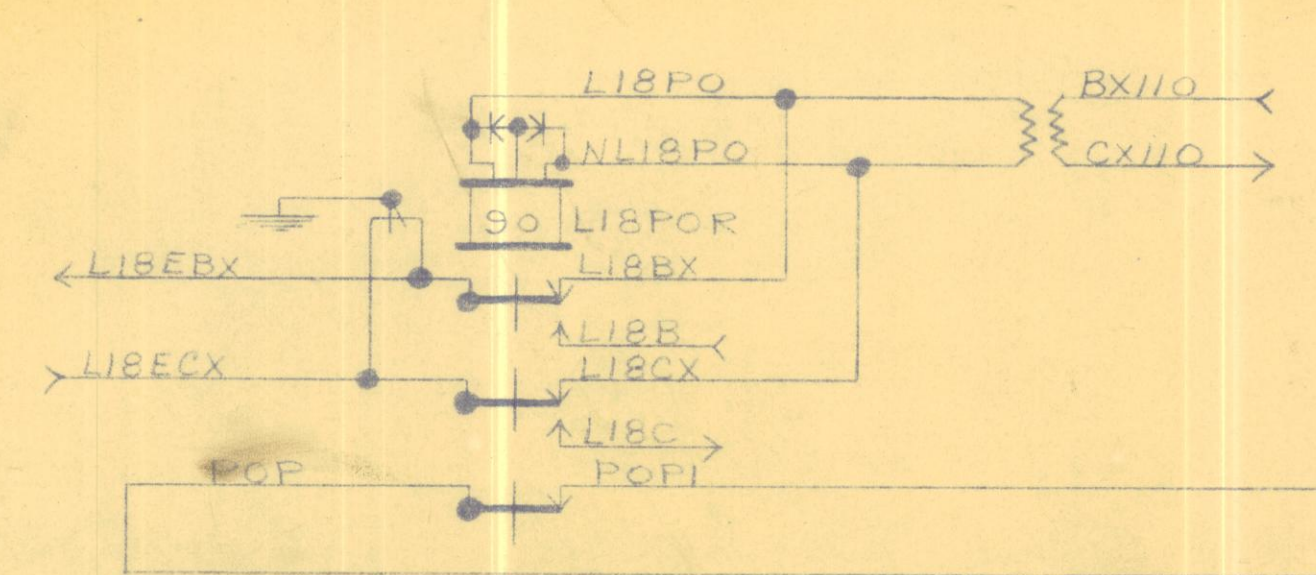


ERIE RAILROAD COMPANY
 OFFICE OF GENL. SUPT. COMMS. & SIGNALS
 CIRCUITS AT
 "A B"
 HUBBARD, OHIO

L18 // CASE

HOUSE

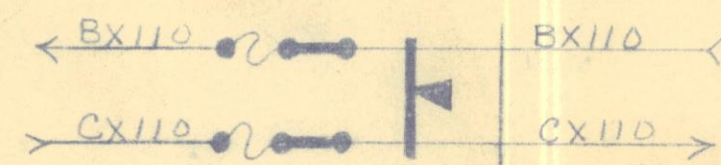
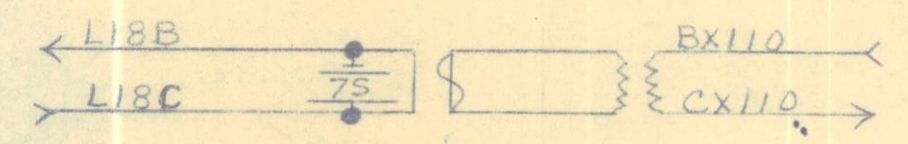
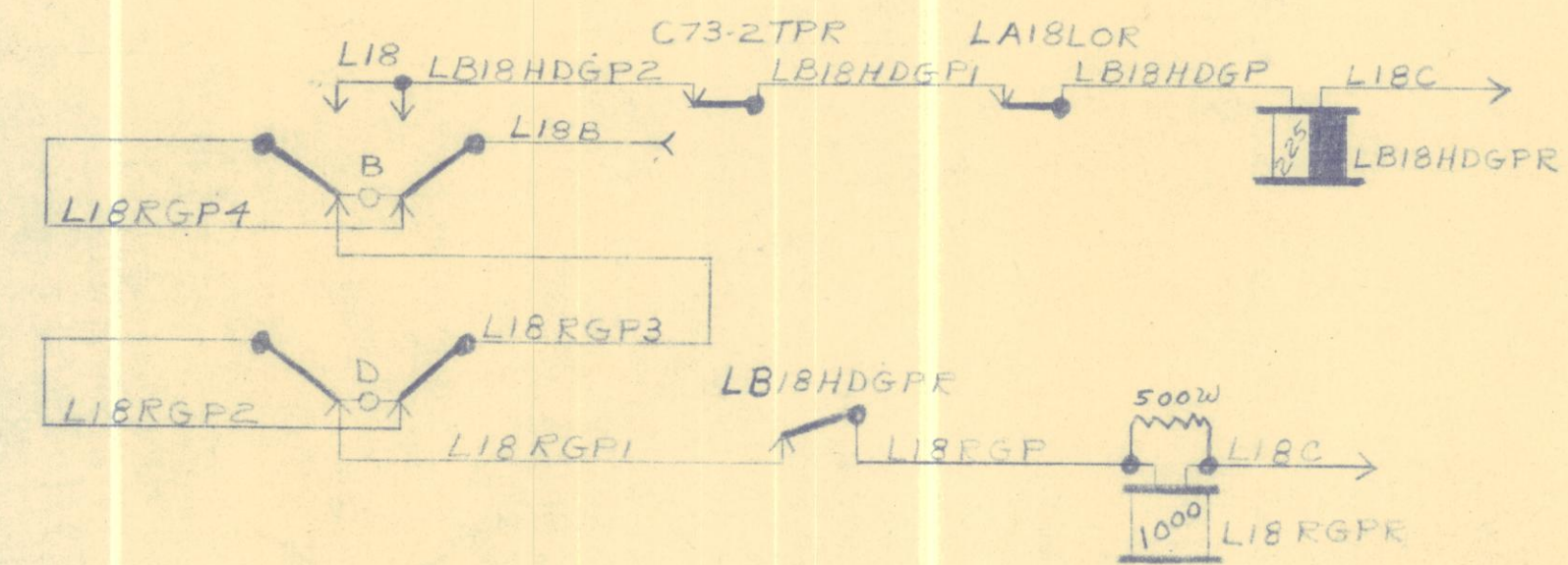
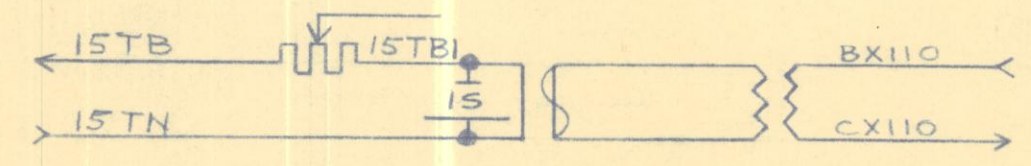
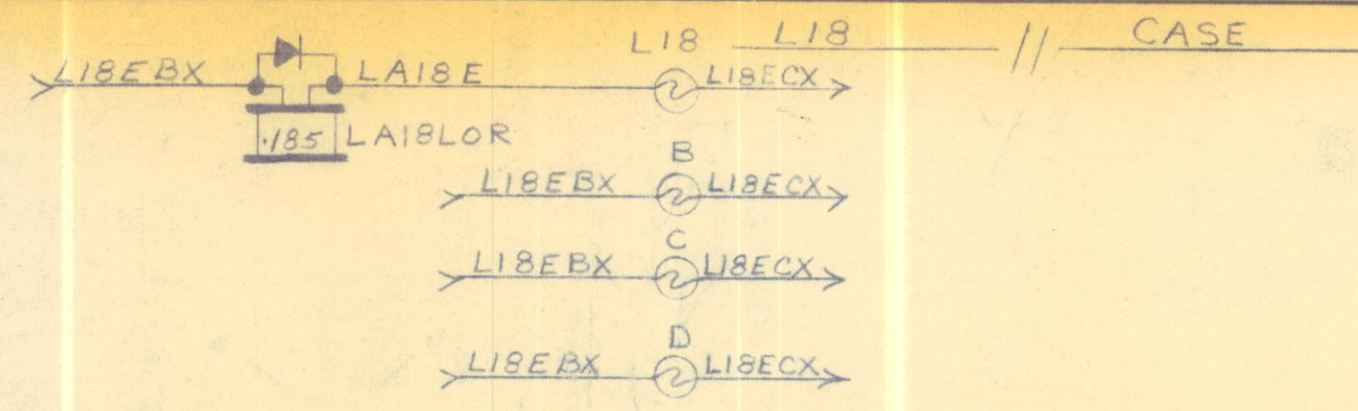
R18 // CASE



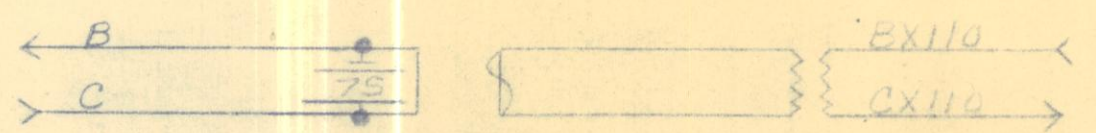
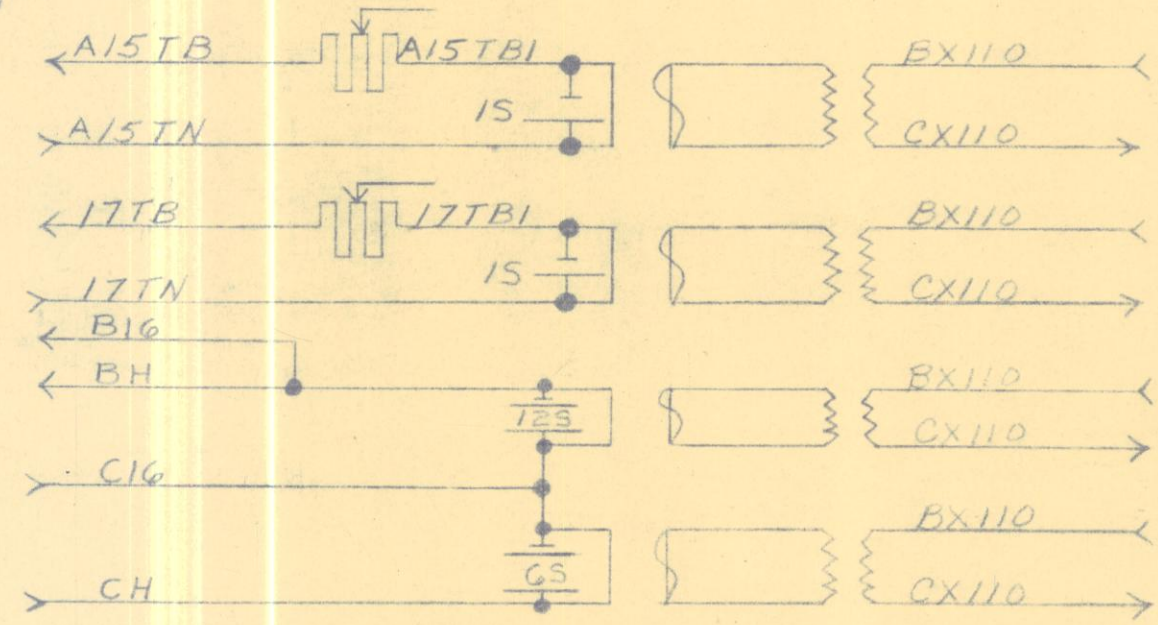
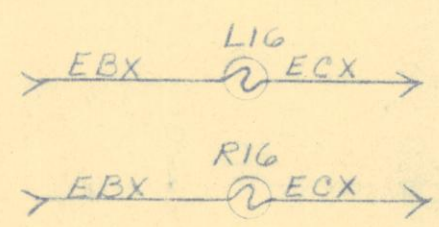
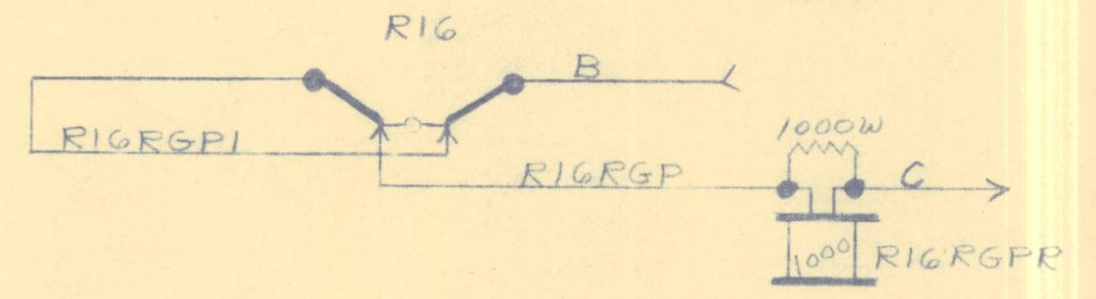
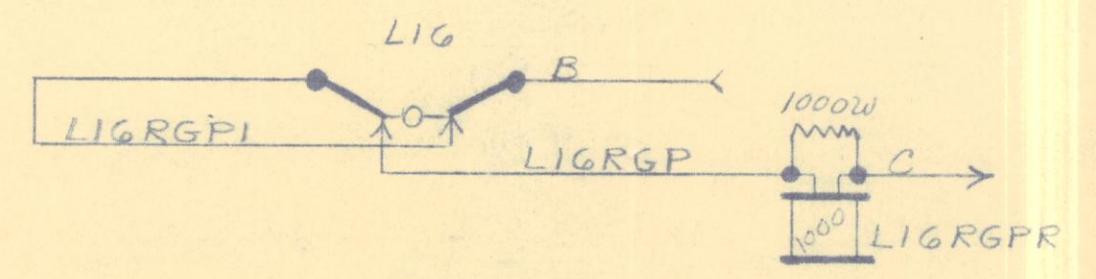
ERIE RAILROAD COMPANY
OFFICE OF GENL. SUPT. COMMS. & SIGNALS
CIRCUITS AT
"AB"
HUBBARD, OHIO
SHEET 14 OF 21 SHEETS

REV 9-14-53

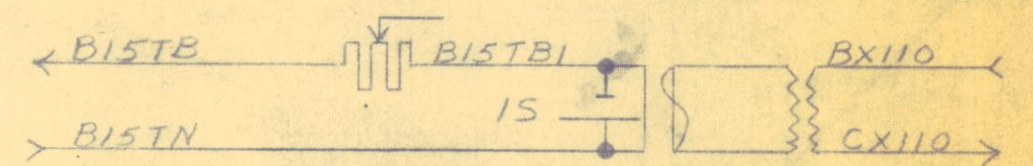
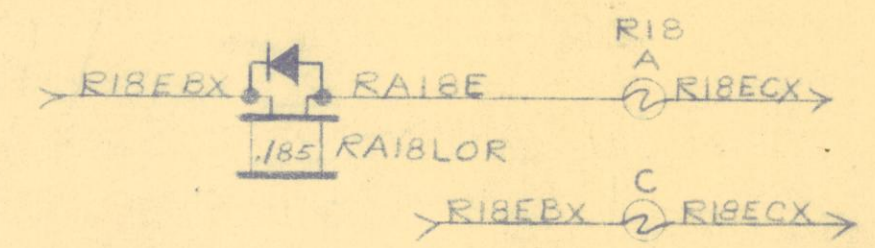
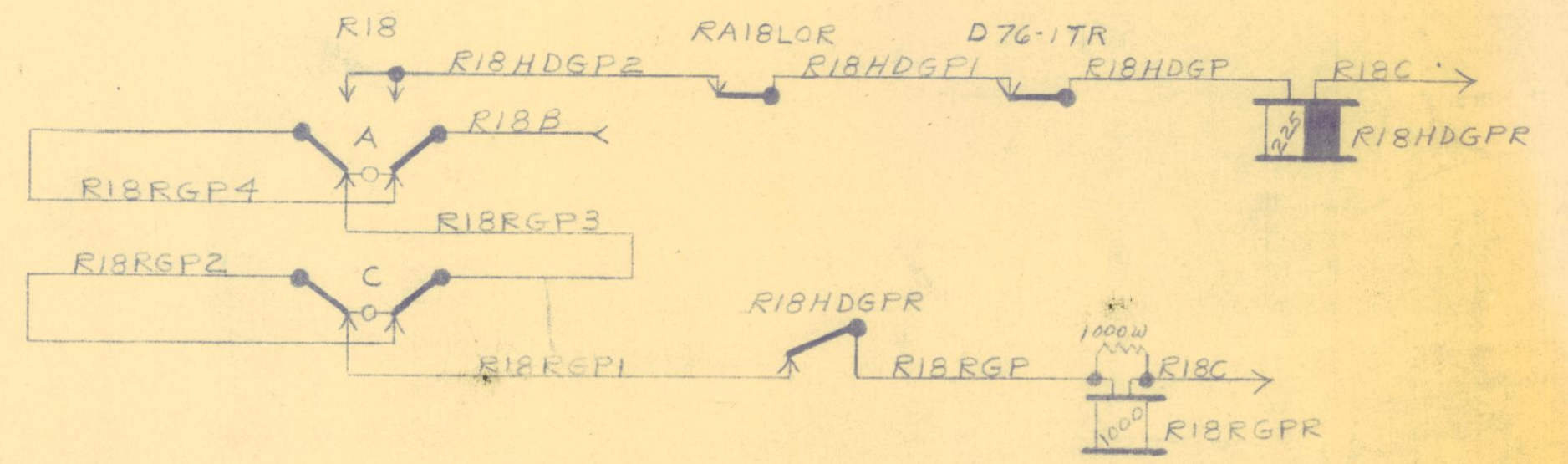
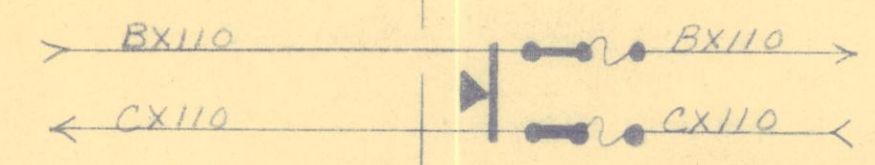
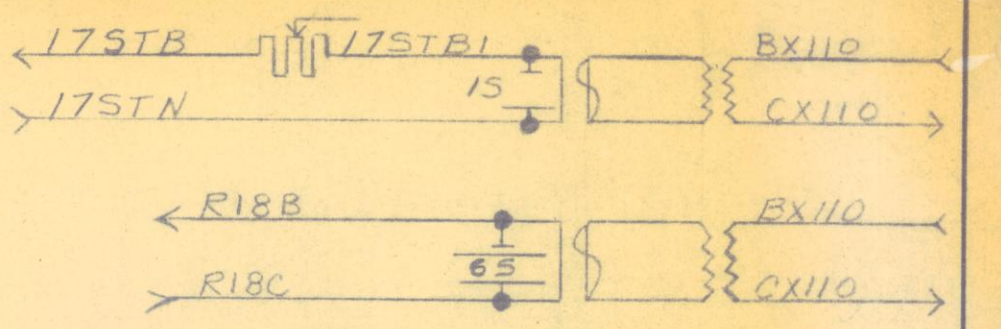
1ST DIST. MAHONING DIVISION SHEET #57



HOUSE



R18 CASE



ERIE RAILROAD COMPANY
OFFICE OF GENL. SUPT. COMMS. & SIGNALS
CIRCUITS AT
"A B"
HUBBARD, OHIO

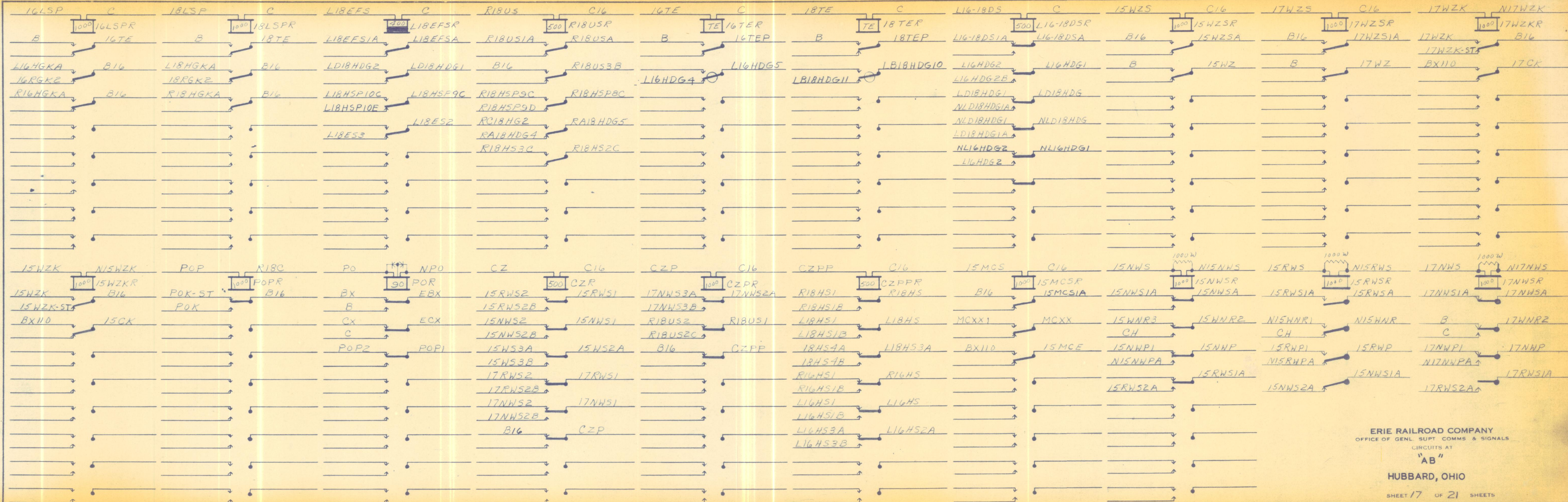


ERIE RAILROAD COMPANY
 OFFICE OF GENL SUPT COMMS & SIGNALS
 CIRCUITS AT
"AB"
 HUBBARD, OHIO

SHEET 16 OF 21 SHEETS

REV. 9-14-59

MAHONING 1ST DIST. DIVISION SHEET # 57



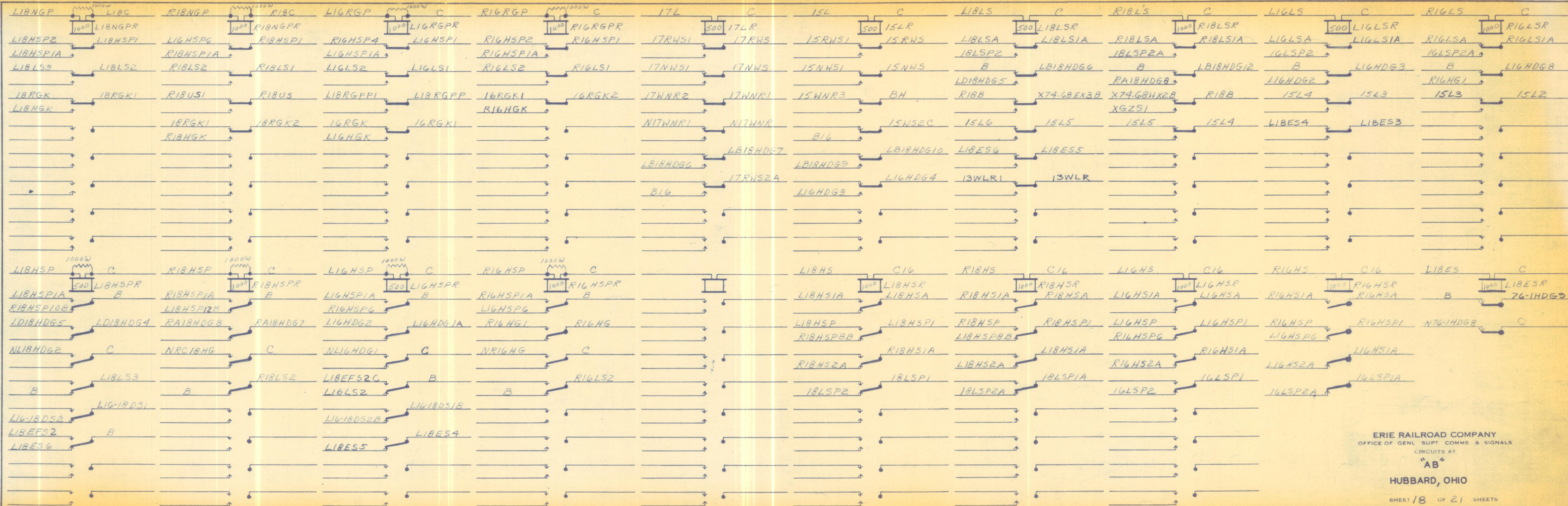
ERIE RAILROAD COMPANY
OFFICE OF GENL. SUPT. COMMS. & SIGNALS
CIRCUITS AT
"AB"

HUBBARD, OHIO

SHEET 17 OF 21 SHEETS

Rev. 3-14-59

MAHONING 1ST DIST. DIVISION SHEET #57



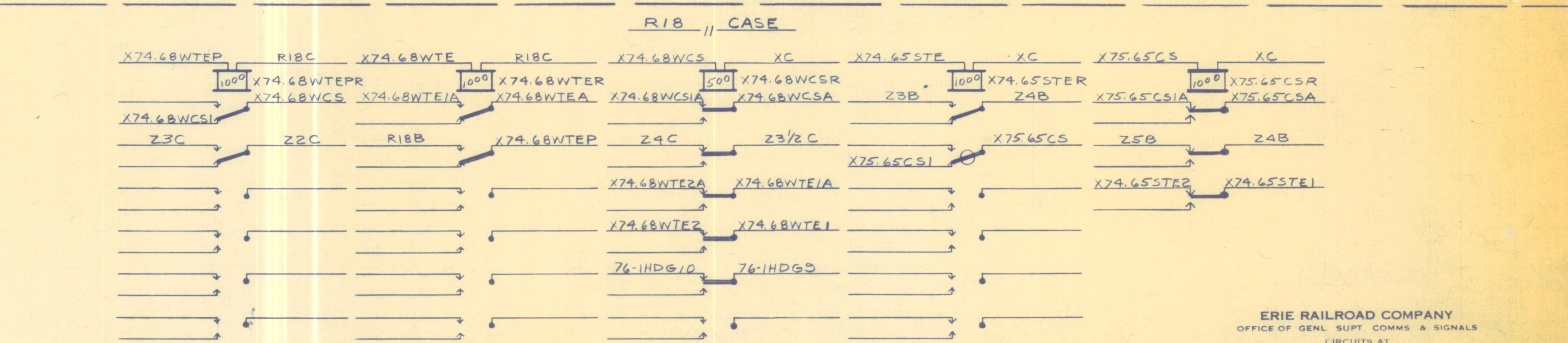
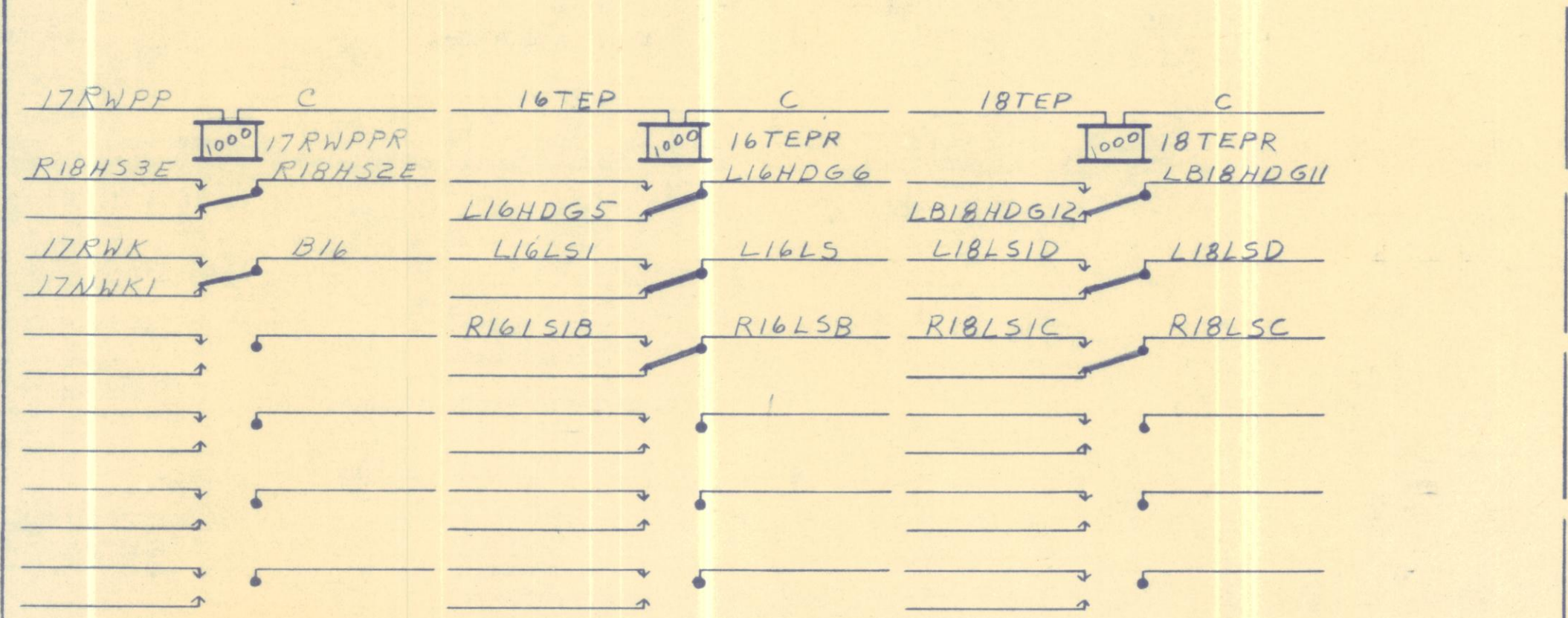
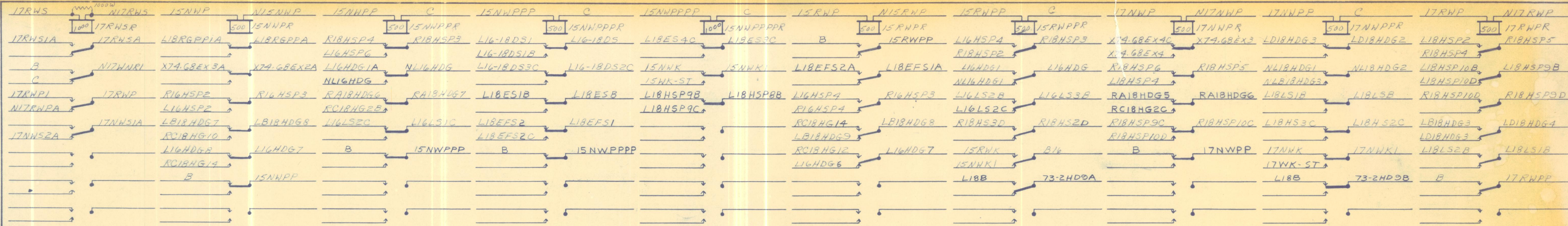
ERIE RAILROAD COMPANY
 OFFICE OF GENL SUPT COMMS & SIGNALS
 CIRCUITS AT
 "AB"

HUBBARD, OHIO

SHEET 18 OF 21 SHEETS

Rev. 9-14-59

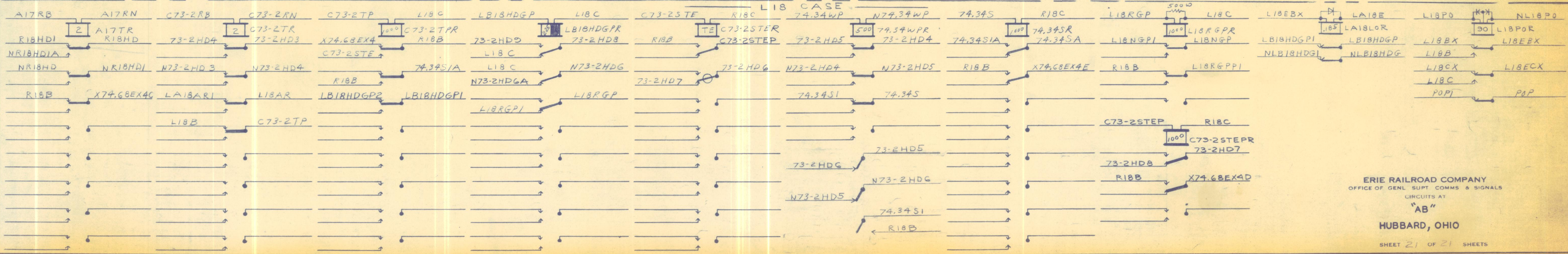
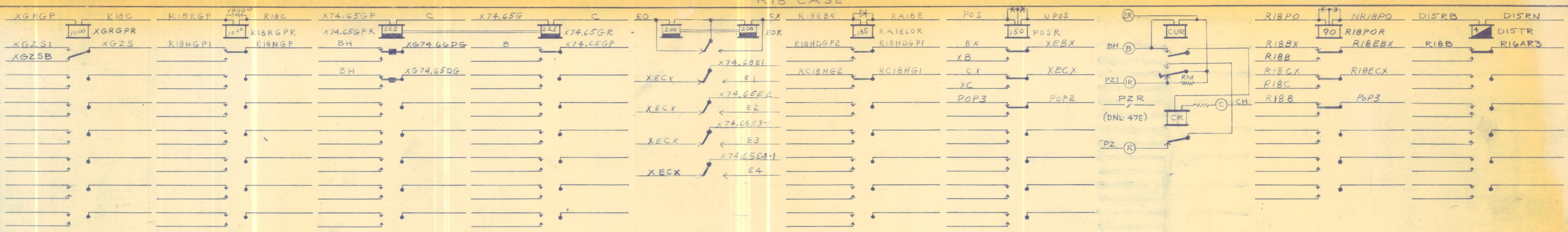
MAHONING 1ST DIST. DIVISION SHEET # 57



ERIE RAILROAD COMPANY
 OFFICE OF GENL SUPT COMMS & SIGNALS
 CIRCUITS AT
 "AB"
 HUBBARD, OHIO
 SHEET 19 OF 21 SHEETS



ERIE RAILROAD COMPANY
 OFFICE OF GENL SUPT COMMS & SIGNALS
 CIRCUITS AT
 "AB"
 HUBBARD OHIO



ERIE RAILROAD COMPANY
 OFFICE OF GENL Supt COMMS & SIGNALS
 CIRCUITS AT
"AB"
 HUBBARD, OHIO

CHAS. BRUNING CO., CLEVELAND, OHIO