

SECTION 15
SUBSECTION A
COLOR LIGHT SIGNAL
CLS-10 ZCG UTILITY SCRAP
UNION MO 63084

INDEX

Introduction 15-A-1

Color Light Signal Head and Mounting
Bracket Assemblies 15-A-2

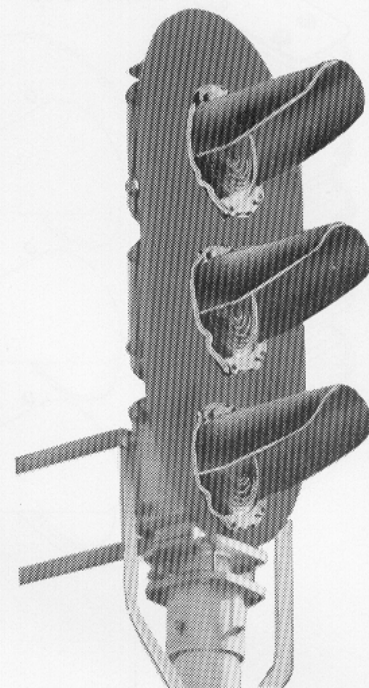
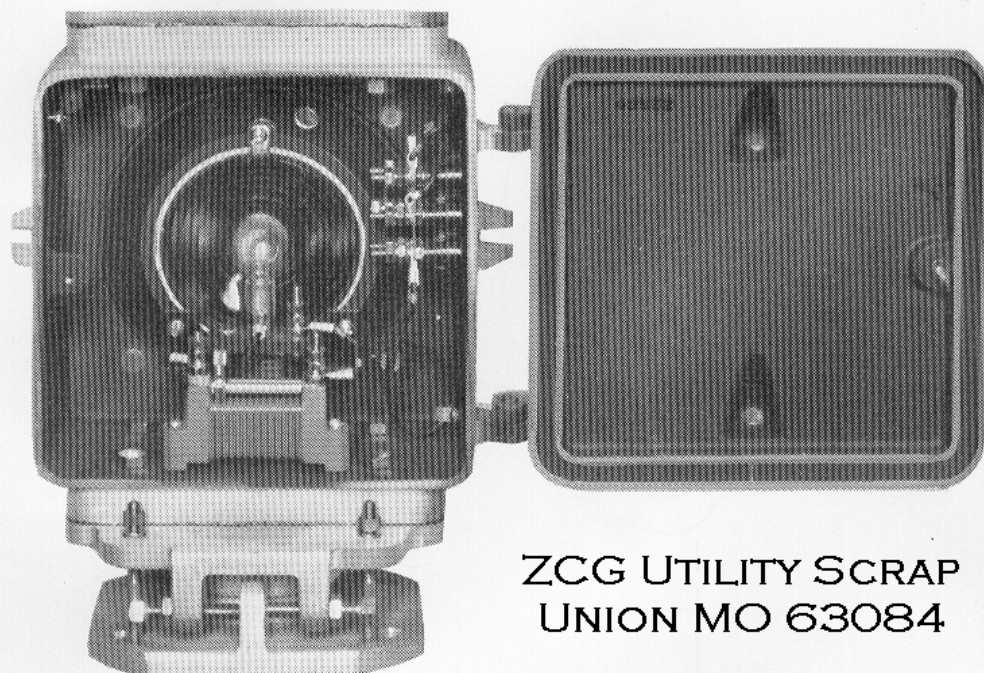
Ordering Information 15-A-3

Color Light Signal Head Replacement Parts 15-A-4

Note: Mast, Ladder and Base Assemblies for use with Color Light Signals
are found in Section 15-C.



COLOR LIGHT SIGNAL CLS-10



INTRODUCTION

The CLS-10 Color Light Signal Housing and door are made of cast aluminum. Neoprene door packing provides a weather tight seal between door and housing. A brass lock screw secures the hinged door to lamp housing and utilizes a standard terminal wrench or spanner key to open or close. Additional security may be provided by using a padlock to prevent access to lock screw.

The outside clear lens is 8-3/8" D. with a 4" focal length. The inside colored lens is 5-1/2" D. with a 1/2" focal length. Both lenses are available in glass or high impact strength butyrate. (See Section 15-B)

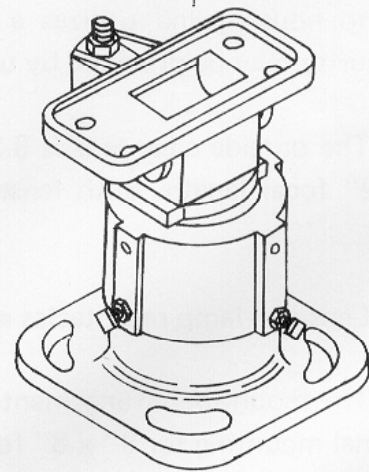
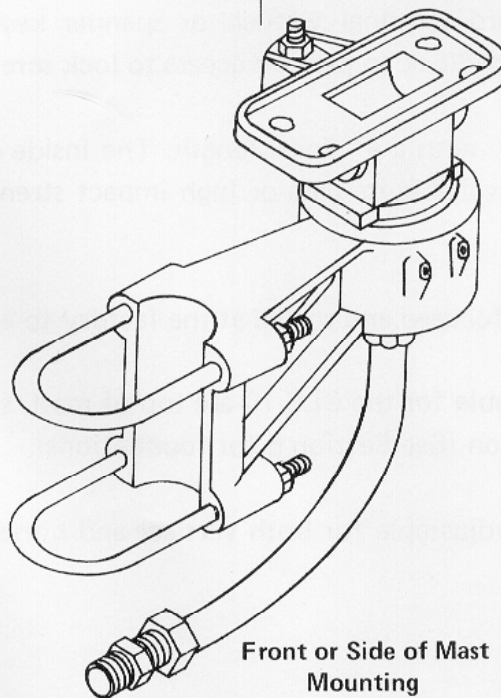
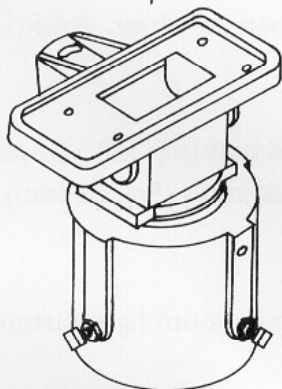
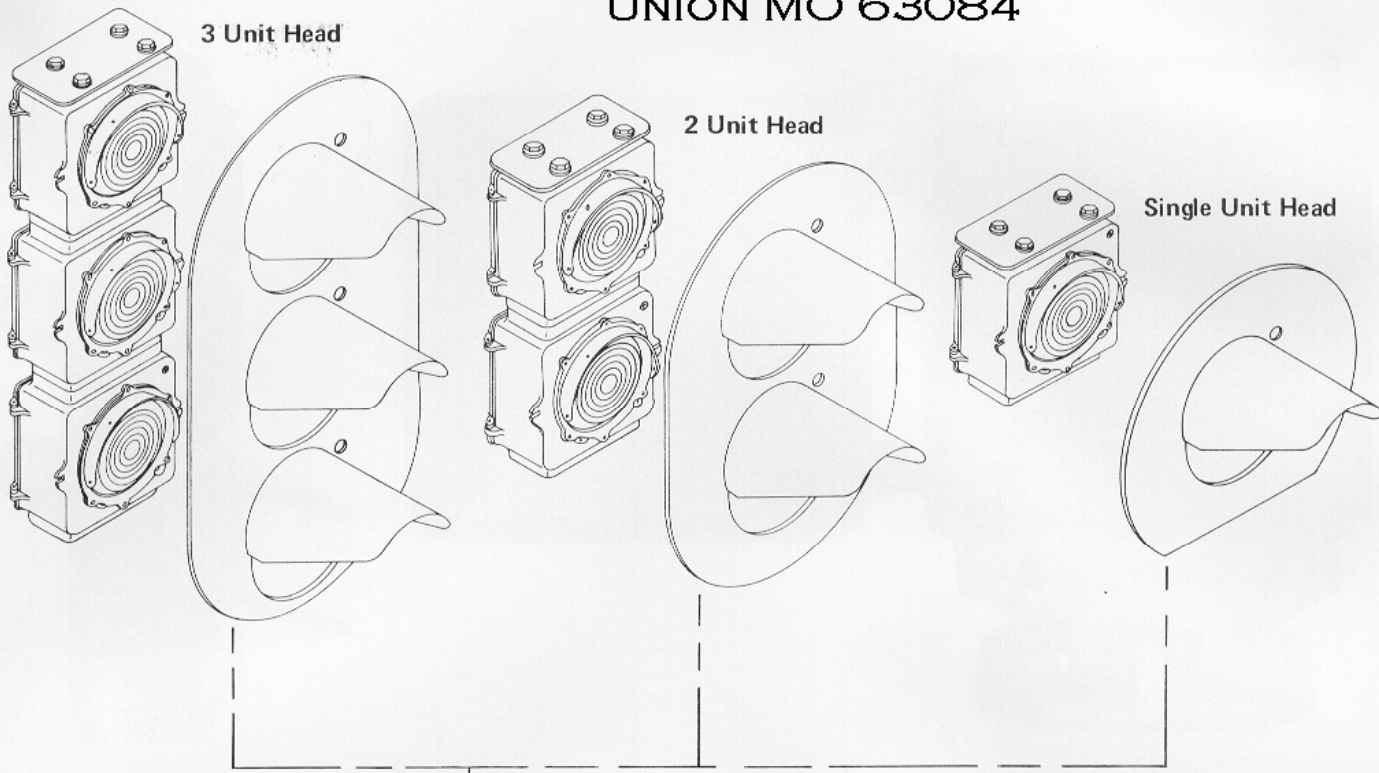
Lens and lamp receptacles are pre-focused and sealed at the factory to assure maximum light output.

The mounting arrangements available for the CLS-10 are top of mast, side or front of mast, and dwarf signal mounting for 8" x 8" foundation (See Section 6 for foundations).

Mounting bracket assemblies are adjustable for both vertical and horizontal alignment. An alignment sight is provided with each assembly.

COLOR LIGHT SIGNAL HEAD AND MOUNTING BRACKET ASSEMBLIES

ZCG UTILITY SCRAP
UNION MO 63084



ORDERING INFORMATION

TO ORDER SPECIFY: **ZCG UTILITY SCRAP
UNION MO 63084**

1. Color light signal head
Description and assembly number (see table below).
2. Color indication arrangement (bottom to top)
Note: Red, yellow, green or lunar white are available.
3. Mounting Bracket
Description and assembly number (see table below).
Note: Specify if other than 5" pipe mast mounting.
4. Lenses desired, Inner and Outer. (See section 15-B).
Note: Outer clear lens with 40° deflection bullseye will be furnished unless otherwise specified.
5. Bulb, 10 volt, 18 watt bulb will be furnished unless otherwise specified.
(See Section 2-E).
6. Visor and background, specify steel or plastic.
Note: Background not furnished on Dwarf Signals unless specified.

Color Light Signal Head Assembly Numbers

CLS-10 ASSEMBLY NUMBERS		
Single Unit Head	Two Unit Head	Three Unit Head
042250-19X	042250-17X	042250-15X

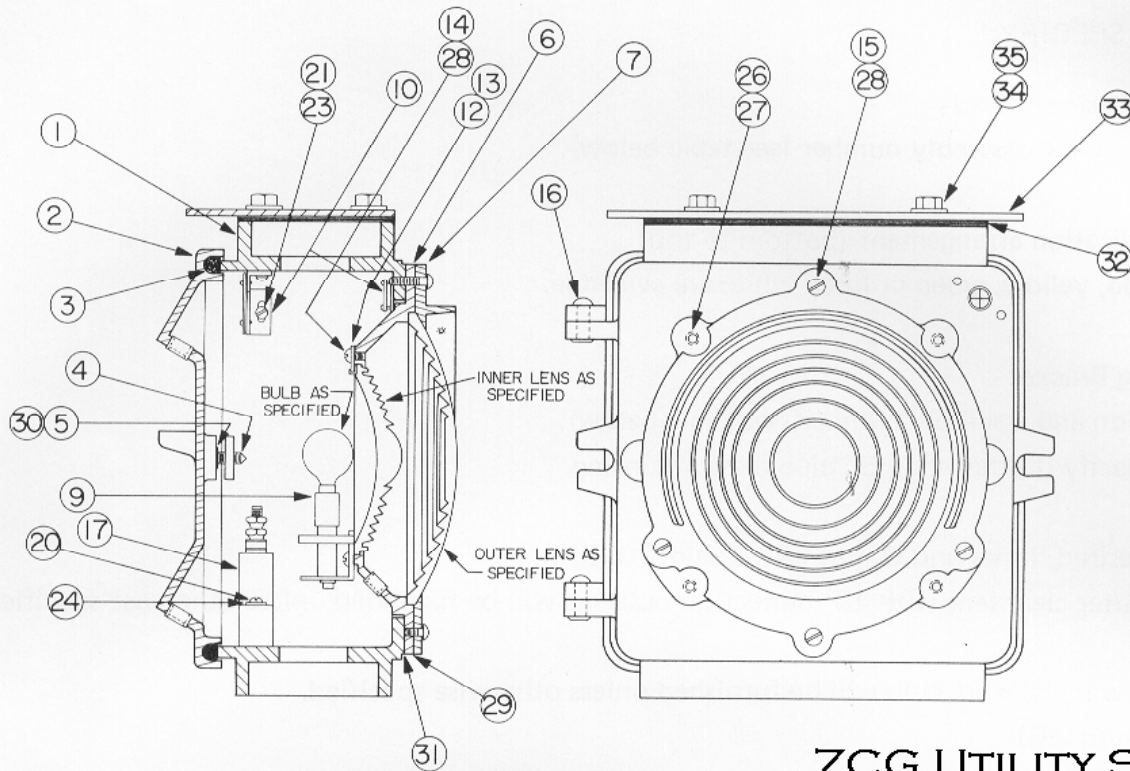
Mounting Bracket Assembly Numbers

Note: Mast mounting bracket assemblies are for 5" pipe mast unless specified otherwise on your order.

BRACKET ASSEMBLY NUMBERS		
Top of Mast	Front or Side of Mast	Dwarf Mounting Base
042254-1X	042256-X	042275-X



COLOR LIGHT SIGNAL HEAD REPLACEMENT PARTS



**ZCG UTILITY SCRAP
UNION MO 63084**

TO ORDER SPECIFY: Description and Part Number

Item Number	Description	Part Number	Item Number	Description	Part Number
1	Housing, Cast Aluminum	042251	20	10-24 x 1-1/2" RHMS	2600-RSC
2	Door Cover, Cast Aluminum	042252	21	10-24 x 1/2" RHMS	2592-RSC
3	Door Packing, Neoprene	104510	22	10-24 x 1/4" RHMS (not shown, for wire clamp)	2588-RSC
4	Locking Bolt	042056	23	Washer lock No. 10	1806-MSC
5	Retaining Ring	7563	24	Washer flat No. 10	1712-SC
6	Lens Housing, Cast aluminum	042257	25	1/2" D. Plastic Clamp (not shown)	042279
7	Lamp hood adapter, cast aluminum	042259	26	3/8-16 x 3/4" Hex cap screw	4086-HSC
8	Screw Mach RH 10-24 x 5/8"	2594-RSC	27	3/8 Lockwasher	1810-MSC
9	Lamp support Assy	042265-X	28	1/4 Lockwasher	1808-MSC
10	Sighting Device Assy (bottom or single unit only)	042260-1X	29	Lens sealant weatherstrip caulking cord	042258-1
11	Screen bushing vent assy	041913-X	30	Washer flat 5/16D copper	1722-C
12	Lens clamp	042026	31	Form-a-gasket	107113
13	Lens pad	042058	32	Gasket	042268-1
14	Retaining screw	042266	33	Cap Cast Aluminum	042255
15	Retaining screw	042266-1	34	Lead washer	042268-2
16	5/16 D x 1-1/4" aluminum rivet	3726-RA	35	Screw cap hex 1/2-13 x 2-3/4"	4173-HSC
17	Adjustable resistor 5 ohm max.	029603-2X	36	Washer lock 1/2 (not shown)	1812-MSC
18	Multi unit terminal assy (not shown, used in bottom or single unit only)	023274-23X	37	Nut Hex 1/2-13 (not shown)	2108-SC
19	Connector (not shown, used with item #18)	023839-2			